

DC Power Sockets



Features

- Split center pin shaped to hold mating plug firmly.
- 712A accepts plugs 12mm (0.475") long, 2.51mm (0.099") diameter sleeve.
- 722A accepts plugs 12mm (0.475") long, 2.03mm (0.08") diameter sleeve.
- Non-turn mounting possible using standard "D" shape bushing.
- Mates with 20-0882 to 20-0892.

Mounting

Mounts in 7.95mm (0.313") diameter hole in panels up to 3.175mm (0.125") thick (max.).

Specifications

Mechanical

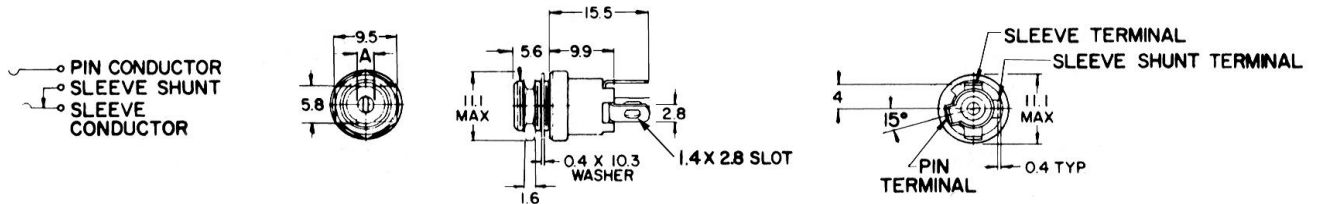
Life: 10,000 insertion/withdrawal cycles minimum.
 Insertion/Withdrawal Forces: 3 pound insertion (maximum),
 4 ounce minimum withdrawal.

Electrical

Contact Resistance: 0.01Ω maximum (initial),
 0.02Ω maximum (after humidity/durability exposure)
 0.1Ω maximum (after salt spray)
 Insulation Resistance: 10,000 MΩ minimum (initial),
 1,000 MΩ minimum (after humidity/durability exposure).
 Contact Rating: 5A, 12V DC. resistive.

Material

Housing: Moulded plastic.
 Mounting Bushing and Hex Nut: Plated copper alloy.
 Pin, Spring and Terminals: Plated copper alloy.
 Insulators: Rigid plastic.
 Hardware: Supplied with one P2439 nickel-plated brass hex nut, and one P2441 nickel-plated steel flat washer.



Switchcraft type	Description	Dimension A
722A	2.1mm Panel Power Socket	2.1mm
712A	2.5mm Panel Power Socket	2.5mm