

Associated products

TruMotion

Low voltage sleeve bearing cooling fans 40x40x10mm



From **£1.31**

See page 316

Rapid

1/0.6mm Single core equipment wire on 100m reels



From **£3.67**

See page 6

VTX vigortronix

PCB Mount miniature precision current transformer



From **£2.50**

See page 727

CAMDENBOSS
ELECTRONICS & ENCLOSURES

See page 198

Easy break terminal strips



From **£0.5916**

TruConnect

DIN Rail terminals

See page 251



From **£0.103**

CAMDENBOSS
ELECTRONICS & ENCLOSURES

See page 187

6.35mm pitch 32A 450V Rising clamp power terminal



From **£0.3366**

AlphaWire
Cable you trust. Service you deserve.

Stranded EcoWire Hook-up wire

30.5m reels



From **£8.36**

See page 8

RVFM

2-core Round PVC mains cable

100m reels



From **£17.77**

See page 14

Rapid

Ribbon cable



From **£6.16**

See page 18

HellermannTyton

Helacon wire connectors

Box of 50



From **£6.33**

See page 188

DURACELL

Procell alkaline batteries

Packs of 10



From **£3.43**

See page 206

VTX vigortronix

Chassis mains transformer with single primary windings

5 and 6-Channel mixers



From **£2.99**

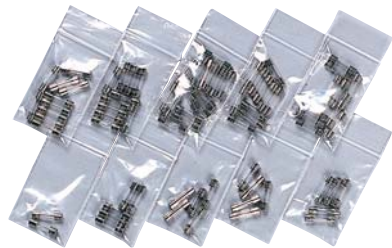
See page 732

20mm fuseholders	331
20mm fuses	330
25mm fuseholders	334
25mm fuses	334
32mm fuseholders	335
32mm fuses	335
Automotive fuses	337
Axial lead fuses	336
Circuit breakers	340
European fuses	336
Industrial fuses	339
Resettable fuses	338
Thermal fuses	339

20mm Fuses



20mm Quick blow fuse kit



A kit of 77x 20mm quick blow fuses.

- Each type individually packed in a resealable polythene bag
- Selection has been carefully selected by rating
- Rated at 250V AC

See **Storage/packing equipment** section for suitable storage cabinets.

Technical specification

Contents:					
2x	50mA	15x	1.0A	10x	5.0A
5x	100mA	5x	1.6A	5x	6.3A
5x	250mA	10x	2.0A		
10x	500mA	10x	3.15A		

Type	Order code	1+	5+
20mm QB Fuse kit	13-0300	6.34	5.36



20mm Slow blow fuse kit



A kit of 102x 20mm slow blow fuses.

- Each fuse is individually packed in a resealable polythene bag
- Selection has been carefully selected by rating
- Rated at 250V AC

See **Storage/packing equipment** section for suitable storage cabinets.

Technical specification

Contents:					
2x	50mA	20x	1.0A	5x	3.15A
5x	100mA	10x	1.6A	10x	5.0A
10x	250mA	15x	2.0A	10x	6.3A
10x	500mA	5x	2.5A		

Type	Order code	1+	5+
20mm SB Fuse kit	13-0305	10.71	9.39

Scheduled orders

Rapid will store your order **FREE OF CHARGE** and then deliver the required amount along with an individual invoice on your specified dates.

Fax your scheduled order and required dates to:



01206 751188

Technical data

Contact us directly on
01206 751166

or download from our website
www.rapidonline.com



Fast blow 20 x 5mm ceramic fuses

A range of miniature 20 x 5mm fast blow ceramic fuses.

- Rated at 250V AC
- Nickel plated brass end caps
- **Siba 70-007-33** series



Technical specification
Rating Breaking capacity
250mA to 10A 1500A
12.5A to 16A 1000A

Rating	Order code	1+	100+	1000+
250mA	26-2471	0.14	0.1123	0.104
500mA	26-2472	0.09	0.079	0.0728
630mA	26-2473	0.09	0.079	0.0728
800mA	26-2474	0.09	0.079	0.0728
1A	26-2475	0.09	0.079	0.0728

1.25A	26-2476	0.09	0.079	0.0728
1.6A	26-2468	0.09	0.079	0.0728
2A	26-2469	0.09	0.079	0.0728
2.5A	26-2477	0.09	0.079	0.0728
3.15A	26-2478	0.09	0.079	0.0728
4A	26-2479	0.09	0.079	0.0728
5A	26-2480	0.09	0.079	0.0728
6.3A	26-2481	0.09	0.079	0.0728
8A	26-2482	0.09	0.079	0.0728
10A	26-2483	0.09	0.079	0.0728
12.5A	26-2484	0.09	0.079	0.0728
16A	26-2485	0.09	0.079	0.0728



Medium blow 20 x 5mm glass fuses

A range of miniature 20 x 5mm medium blow glass fuses.

- Rated at 250V AC
- Nickel plated brass end caps
- **Siba 70-001-02** and **70-004-02** series



Technical specification
Rating Breaking capacity
250mA to 1A 80A
1.6A to 6.3A 1000A
8A to 10A 300A

Rating	Order code	1+	100+	1000+	5000+
250mA	26-2486	0.14	0.1144	0.104	0.0936
500mA	26-2487	0.14	0.1144	0.104	0.0936
1A	26-2488	0.14	0.1144	0.104	0.0936
1.6A	26-2489	0.14	0.1144	0.104	0.0936
2A	26-2490	0.14	0.1144	0.104	0.0936
2.5A	26-2491	0.14	0.1144	0.104	0.0936
3.15A	26-2492	0.14	0.1144	0.104	0.0936
4A	26-2493	0.14	0.1144	0.104	0.0936
5A	26-2494	0.14	0.1144	0.104	0.0936
6.3A	26-2495	0.14	0.1144	0.104	0.0936
8A	26-2496	0.14	0.1144	0.104	0.0936
10A	26-2497	0.14	0.1144	0.104	0.0936



Quick blow 20 x 5mm glass fuses

20 x 5mm glass quick blow fuses designed to **IEC127**.

- Breaking capacity 35A/250V AC
- Approved to **SEMKO, VDE, SEV**
- **UL** recognised up to 6.3A
- **Siba 70-001-34** series



Rating	Order code	1+	100+	500+	1000+
50mA	26-0998	0.24	0.1872	0.1664	0.13
63mA	26-1000	0.20	0.156	0.1404	0.1144
100mA	26-1002	0.16	0.1248	0.1092	0.0884
125mA	26-1004	0.16	0.1144	0.0988	0.0832
160mA	26-1006	0.16	0.1144	0.0988	0.0832
200mA	26-1008	0.16	0.1144	0.0988	0.0832
250mA	26-1010	0.16	0.1144	0.0988	0.0832
315mA	26-1012	0.16	0.1144	0.0988	0.0832
500mA	26-1084	0.09	0.0624	0.0572	0.052
630mA	26-1086	0.09	0.0624	0.0572	0.052
800mA	26-1088	0.09	0.0624	0.0572	0.052
1A	26-1090	0.09	0.0624	0.0572	0.052
1.25A	26-1092	0.09	0.0624	0.0572	0.052
1.6A	26-1094	0.09	0.0624	0.0572	0.052
2A	26-1096	0.09	0.0624	0.0572	0.052
2.5A	26-1028	0.08	0.0572	0.052	0.0437
3.15A	26-1098	0.09	0.0624	0.0572	0.052
4A	26-1100	0.09	0.0624	0.0572	0.052
5A	26-1102	0.09	0.0624	0.0572	0.052
6.3A	26-1104	0.09	0.0624	0.0572	0.052
8A	26-1038	0.08	0.0572	0.052	0.0437
10A	26-1040	0.08	0.0572	0.052	0.0437



Ultra rapid 20 x 5mm fuses

Ultra rapid fuses with high breaking capacity, good mechanical/vibration characteristics with **UL** recognition (up to 5A).

- Typical applications include short circuit protection of semiconductors such as triacs, thyristors and diodes
- Breaking capacity up to 1500A/250V AC
- **Siba 70-001-40** series



Technical specification
Voltage rating 250V AC
Breaking capacity 1500A (≥6.3A)
300kA (<6.3A)

Time/current characteristics

Rating	1.2In	2.75In	4In	10In	min.	max.	min.	max.
500mA	>1hr	15s	50ms	200ms	1ms	10ms	<5ms	<2ms
1A+	>1hr	50ms	2ms	15ms	1ms	10ms	<2ms	<2ms

Mfr. part no. **70-001-40 + rating**

Rating	Order code	1+	100+	500+	1000+
1A	26-5622	0.57	0.4992	0.4368	0.4056
1.6A	26-5624	0.57	0.4992	0.4368	0.4056
2A	26-5626	0.57	0.4992	0.4368	0.4056
3.15A	26-5628	0.57	0.4992	0.4368	0.4056
4A	26-5629	0.72	0.624	0.546	0.5065
5A	26-5630	0.57	0.4992	0.4368	0.4056
6.3A	26-5632	0.57	0.4992	0.4368	0.4056
8A	26-5634	0.57	0.4992	0.4368	0.4056
10A	26-5636	0.57	0.4992	0.4368	0.4056



Slow blow 20 x 5mm glass fuses

20 x 5mm slow blow fuses manufactured to **IEC27**.

- Breaking capacity 5A/250V AC
- **UL** recognised up to 6.3A
- Approved to **SEMKO, VDE, SEV**
- **Siba 70-001-35** series



Rating	Order code	1+	100+	500+	1000+
50mA	26-1042	0.16	0.1248	0.1144	0.0988
100mA	26-1044	0.16	0.1248	0.1144	0.0988
200mA	26-1046	0.16	0.1248	0.1144	0.0988
250mA	26-1048	0.16	0.1248	0.1144	0.0988
315mA	26-1050	0.16	0.1248	0.1144	0.0988
500mA	26-1052	0.16	0.1248	0.1144	0.0988
630mA	26-1054	0.16	0.1248	0.1144	0.0988
800mA	26-1056	0.16	0.1248	0.1144	0.0988
1A	26-1058	0.16	0.1248	0.1144	0.0988
1.25A	26-1060	0.16	0.1248	0.1144	0.0988
1.6A	26-1062	0.16	0.1248	0.1144	0.0988
2A	26-1064	0.16	0.1248	0.1144	0.0988
2.5A	26-1066	0.16	0.1248	0.1144	0.0988
3.15A	26-1068	0.16	0.1248	0.1144	0.0988
4A	26-1070	0.16	0.1248	0.1144	0.0988
5A	26-1072	0.16	0.1248	0.1144	0.0988
6.3A	26-1074	0.16	0.1248	0.1144	0.0988
8A	26-1076	0.16	0.1248	0.1144	0.0988
10A	26-1078	0.16	0.1248	0.1144	0.0988
12.5A	26-1080	0.26	0.2184	0.1976	0.1768
16A	26-1082	0.30	0.2808	0.26	0.2392



Antisurge 20 x 5mm ceramic fuses

High breaking capacity 20 x 5mm ceramic fuses designed to IEC127.

- Breaking capacity 1500A/250V AC
- Approved to SEMKO, VDE, UL recognised 1A-10A
- Siba 70-007-65 series



Rating	Order code	1+	100+	1000+	5000+
125mA	26-0378	0.14	0.1196	0.1092	0.0988
200mA	26-0379	0.16	0.1248	0.1144	0.104
250mA	26-0380	0.14	0.1196	0.1092	0.0988
315mA	26-0382	0.14	0.1196	0.1092	0.0988
400mA	26-0383	0.16	0.1248	0.1144	0.104
500mA	26-0384	0.14	0.1196	0.1092	0.0988
1A	26-0386	0.14	0.1196	0.1092	0.0988
2A	26-0388	0.14	0.1196	0.1092	0.0988
3.15A	26-0390	0.14	0.1196	0.1092	0.0988
5A	26-0392	0.14	0.1196	0.1092	0.0988
6.3A	26-0394	0.14	0.1196	0.1092	0.0988
8A	26-0396	0.16	0.1248	0.1144	0.104
10A	26-0398	0.16	0.1248	0.1144	0.104

20mm Fuseholders



20mm Chassis mounting fuseholder

A low-cost chassis mounting fuseholder.

- Accepts 5.0 x 20mm fuses
- Rated 8A 250V AC
- Body moulded from phenolic resin
- Fuseholder is terminated with quick fit terminals
- Nickel plated brass terminals
- Mounted to chassis with M3 screw
- Anti-rotation spigot
- Dimensions 39.6mm(L) x 11(W)
- UL flame 94V-1 and VDE approved



Type	Order code	1+
Chassis fuseholder	26-1579	0.10

COOPER Bussmann 20mm PCB Fuse block

Fuse holders are devices for containing, protecting and mounting fuses. This high quality PCB-mounting fuse holder is ideal for fuses of 20mm in length. The blown fuses can be changed quickly and easily when used in conjunction with a fuse holder.



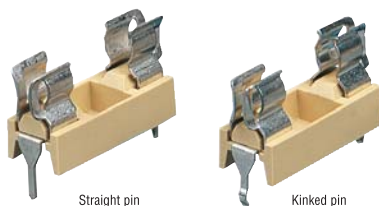
The contacts have been manufactured from brass and tin plated to enable low contact resistance and superior life. Designed for space-saving use, these clips have been designed to mount easily and retain a stable position during wave soldering.

- PCB horizontal mounting
- Kinked pin for PCB retention
- Rating: 250V AC / 6.3A
- Contacts resistance: Brass tin plated
- Insulation resistance: >100M ohms
- Dielectric strength: >2000V AC
- Insulating body: High temperature thermoplastic that meets UL94-V0 and UL94-V1
- Approvals: UL, VDE, CE

Type	Order code	1+	100+	1000+	5000+
20mm PCB Fuse block	26-2000	0.11	0.0697	0.0645	0.051
20mm PCB fuseblock cover	26-2001	0.04	0.0312	0.0281	0.026



CFH02 Series 20mm PCB Fuseholders



Straight pin Kinked pin

CFH02 range of printed circuit board mounted fuseholders for use with 20 x 5mm fuses.

- The holder is available with straight pins or with kinked pins for easy PCB retention
- A transparent snap on plastic hood provides a fingerproof enclosure
- Part of the CamdenBoss CFH02 range

Type	Order code	1+	100+	1000+	5000+
Kinked pin fuseholder	26-0164	0.12	0.0832	0.0728	0.0624
20mm PCB Fuseholder	26-0165	0.11	0.0728	0.0676	0.0541
Cover for fuseholder	26-0170	0.04	0.0312	0.0281	0.026



Semi-enclosed PCB fuseholder

A PCB fuseholder for 20 x 5mm fuses up to 5A rating 250V AC.

- Moulded in black glass filled nylon
- Operating temperature: -40°C to +110°C
- Pin centre 22.5mm
- Camden type CFH14/14HB



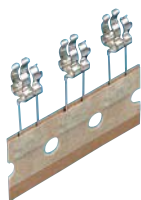
Type	Order code	1+	100+	1000+	5000+
20mm Enclosed holder	26-0167	0.15	0.104	0.0884	0.0728



Taped 5mm fuse clips

Tin plated phosphor bronze fuse clips for 20 x 5mm fuses supplied on tape suitable for auto insertion.

- Mounting hole 1.5mm on 5.08mm pin pitch
- Rated at 10A 250V AC
- Camden type CFH01T



Type	Order code	1+	100+	1000+
20 x 5mm Fuse clip	26-7620	0.05	0.026	0.0198



15A Chassis mounting 20mm fuseholder

A chassis mounting fuseholder for 20 x 5mm fuses.

- Single hole fixing
- Anti-rotation spigot
- Terminated by 4.8mm faston terminals



Type	Order code	1+	25+	100+	500+
15A Chassis fuseholder	26-7693	0.46	0.3848	0.3432	0.3016



20mm Vertical PCB mounting fuseholder

This fuseholder is ideal for vertical mounting to PCBs.

- Accepts 5 x 20mm fuses
- Rated 10A 250V AC
- Body and cap moulded from phenolic
- Cap may be removed by screwdriver or finger release
- Nickel plated brass terminals
- Dimensions 36.5 x 12mm
- UL flame 94V-1 approved



Type	Order code	1+	100+	500+	1000+
Vertical fuseholder	26-1575	0.25	0.208	0.1872	0.1664



20mm Panel mounting fuseholder 10A 250V AC

A high quality panel mounting fuseholder with chrome locking nut.

- Ideal for 5.2 x 20mm fuses
- Rated 10A 250V AC
- Body and cap moulded from phenolic
- Finger release fuse cap allows ease of use
- Fuseholder terminated with solder/quick fit terminals
- Nickel plated brass terminals
- Dimensions 42.2mm(L) x 15(W)
- UL flame 94V-1 approved



Type	Order code	1+	100+	500+	1000+
20mm Fuseholder	26-1578	0.25	0.208	0.182	0.156



Volume pricing

Need to buy larger quantities?
Contact us now for a volume pricing quotation

01206 751166





20mm Panel mounting fuseholder

A high quality panel mounting fuseholder with chrome locking nut.

- Ideal for 5.0 x 20mm fuses
- Rated 10A 250V AC
- Body and cap moulded from phenolic
- Cap has fuse clearly written in white type
- Finger release fuse cap allows ease of use
- Fuseholder is terminated with solder terminals
- Nickel plated brass terminals
- Dimensions 37.7 x 15mm
- **UL flame 94V-2 approved**



Technical specification
 Voltage rating 10A 250V AC
 Fuse type 5.0 x 20mm
 Mounting Panel
 Cap Screw type
 Mount hole 13.2mm
 Panel thickness 4.5mm

Type	Order code	1+	100+	500+	1000+
20mm Fuseholder	26-1577	0.28	0.2288	0.1945	0.1685



20mm Snap-in fuseholder

A high quality snap-in fuseholder.

- Ideal for 5.0 x 20mm fuses
- Rated 6.3A 250V AC
- Body and cap moulded from nylon
- Screwdriver release fuseholder
- Fuseholder is terminated with solder terminals
- Nickel plated brass terminals
- Dimensions 40.6 x 16mm
- **UL flame 94V-2 approved**



Technical specification
 Voltage rating 10A 125V AC / 6.3A 250V AC
 Fuse type 5.2 x 20mm
 Mounting Snap-in
 Cap Screw type
 Mount hole 12mm
 Panel thickness 0.7 to 3.5mm

Type	Order code	1+	100+	500+
20mm Fuseholder	26-1576	0.28	0.26	0.2392



20mm Snap-in fuseholder

A high quality snap-in fuseholder.

- Ideal for 5.0 x 20mm fuses
- Rated 6.3A 250V AC
- Body and cap moulded from nylon
- Screwdriver release fuseholder
- Fuseholder is terminated with solder terminals
- Nickel plated brass terminals
- Dimensions 40.6 x 16mm
- **UL flame 94V-2 approved**



Technical specification
 Voltage rating 10A 125V AC / 6.3A 250V AC
 Fuse type 5.2 x 20mm
 Mounting Snap-in
 Cap Screw type
 Mount hole 12mm
 Panel thickness 0.7 to 3.5mm

Type	Order code	1+	100+	500+
20mm Fuseholder	26-1576	0.28	0.26	0.2392



20mm Vertical PCB fuseholder

A high quality vertical PCB mounting fuseholder for 20 x 5mm fuses.

- The bayonet type slotted fuse carrier is released with a screwdriver
- The fuseholder has extra terminals to aid stability
- Shocksafe category PC2



Technical specification
 Dimensions 32.6 x 12.5mm
 Pitch 5.8 x 7.62mm
 Rating 10A 250V AC
 Contacts Copper alloy
 Material Flame retardant thermoplastic (UL94V-0 rated)
 Approvals SEV, VDE, SEMKO, UL, CSA
 Schurter part No. 3101.004

Type	Order code	1+	50+	100+	500+
Vertical slotted	26-0364	0.79	0.7176	0.676	0.6656



Finger release vertical PCB fuseholder

A high quality vertical PCB mounting fuseholder for 20 x 5mm fuses.

- A finger release fuse cap is fitted for easy access
- The fuseholder has extra terminals to aid stability
- Shocksafe category PC2



Technical specification
 Dimensions 37.6 x 12.5mm
 Pitch 7.62 x 5.8mm
 Rating 10A 250V AC
 Contacts Copper alloy
 Material Flame retardant thermoplastic (UL94V-0 rated)
 Approvals SEV, VDE, SEMKO, UL, CSA
 Schurter part No. 3101.0045

Type	Order code	1+	50+	100+	500+
Vertical fingergrip	26-0366	0.82	0.7488	0.7176	0.676



Vertical PCB fuseholder

A vertical mounting fuseholder for 5 x 20mm fuses for direct vertical mounting to PCBs. The fixing cap may be removed by screwdriver or finger release. Maximum fuse rating 6.3A

- Maximum fuse rating 6.3A



Technical specification
 Dimensions 31 x 13mm
 Pitch 10mm
 Rating 6.3A 250V AC
 Contacts Tinned nickel plated brass
 Material UL94-V0 flame retardant PBT
 Approvals VDE, SEMKO, UL, CSA, CE
 Manifs. part no. CFH06

Type	Order code	1+	100+	500+
Vertical Fuseholder	26-0181	0.42	0.3536	0.312



Horizontal PCB fuseholder

A horizontal mounting fuseholder for 5 x 20mm type fuses for direct horizontal mounting to PCBs.

- The fixing cap may be removed by screwdriver or finger release
- Maximum fuse rating 6.3A



Technical specification
 Dimensions 33.1 x 11.7mm
 Pitch 10mm
 Rating 6.3A 250V AC
 Contacts Tinned nickel plated brass
 Material UL94-V0 flame retardant PBT
 Approvals VDE, SEMKO, UL, CSA, CE
 Manifs. part no. CFH07

Type	Order code	1+	100+	500+
Horizontal fuseholder	26-0176	0.42	0.3536	0.312



20mm Horizontal PCB fuseholder

A high quality horizontal PCB mounting fuseholder for 20 x 5mm fuses.

- The bayonet type slotted fuse carrier is released with a screwdriver
- Non-conductive centre post to aid stability
- Shocksafe category PC2



Technical specification
 Dimensions 32 x 12.5mm
 Pitch 5.08 x 7.62mm
 Rating 10A 250V AC
 Contacts Copper alloy
 Material Flame retardant thermoplastic (UL94V-0 rated)
 Approvals SEV, VDE, SEMKO, UL, CSA
 Schurter Part No. 3101.0050

Type	Order code	1+	50+	100+	500+
Horizontal slotted	26-0360	0.79	0.7176	0.6656	0.6344



Finger release 20mm horizontal PCB fuseholder

A high quality horizontal PCB mounting fuseholder for 20 x 5mm fuses

- A finger release fuse cap is fitted for easy access
- The fuseholder has a non-conductive centre post to aid stability
- Shocksafe category PC2



Technical specification
 Dimensions 37 x 12.5mm
 Rating 10A 250V AC
 Contacts Copper alloy
 Material Flame retardant thermoplastic (UL94V-0 rated)
 Approvals SEV, VDE, SEMKO, UL, CSA
 Schurter part No. 3101.0055

Type	Order code	1+	50+	100+	500+
Horizontal fingergrip	26-0362	0.82	0.7488	0.7072	0.6968

www.rapidonline.com



Keep a close eye on our website for an updated range of Schurter products



Rapid
... where price meets quality



Finger release 20mm fuseholder

Low-cost panel mounting 20mm finger release fuseholder with knurled cap moulded in black self extinguishing polycarbonate. A screwdriver/coin slot is also incorporated in the fuse cap.

- Maximum fuse rating 6.3A 250V AC
- VDE approved



Technical specification

Dimensions	33.5 x 16mm
Panel cut-out	12.8 x 13.7mm
Current rating	6.3A
Voltage rating	250V AC

Type	Order code	1+	100+	500+	1000+
Finger release fuseholder	26-0160	0.31	0.2288	0.208	0.1976



Finger release 20mm snap-in fuseholder

A high quality snap-in panel mounting fuseholder for 20 x 5mm fuses. A bayonet type fingerproof fuse cap allows ease of use.

- The fuseholder is terminated with solder/quick fit terminals
- Shocksafe category PC2



Technical specification

Dimensions	38 x 12.5mm
Panel cut-out	11.7 x 13mm
Rating	10A 250V AC
Contacts	Tin plated copper alloy
Material	Flame retardant thermoplastic (UL94V-0 rated)
Termination	4.8 x 0.5mm faston/solder
Panel thickness	1.0 - 1.8mm
Approvals	SEV, VDE, SEMKO, UL, CSA
Schurter part no.	3101.0035

Type	Order code	1+	50+	100+	500+
Panel mount fingerproof	26-0370	0.80	0.728	0.6864	0.676



Snap fit 20mm fuseholder

A snap fit fuseholder suitable for 20 x 5mm fuses with screwdriver release fuse carrier.

- Anti-rotation fixing D cut-out
- 6.3A rating
- 2.8mm faston/solder terminals



Technical specification

Dimensions	37.5 x 15mm
Panel cut-out	12.7 x 12mm
Rating	6.3A 250V AC
Contacts	Tinned nickel plated brass
Material	Flame retardant polycarbonate (UL94V-0 rated)
Termination	2.8mm faston/solder
Approvals	UL, CSA, CE
Manfrs. part no.	CFH08

Type	Order code	1+	25+	100+	500+
Snap fit fuseholder	26-7660	0.44	0.3744	0.3328	0.3016



Low profile 20mm fuseholder

A high quality very low profile (just 4.0mm) panel mounting fuseholder for 20mm fuses.

- Screwdriver release bayonet fit fuse cap
- D shaped cutout prevents rotation
- Maximum fuse rating 10A
- UL and CSA approved



Technical specification

Dimensions	34.4 x 15mm
Panel cut-out	12 x 13.2mm
Current rating	10A 250V AC
Approvals	UL, CSA

Type	Order code	1+	100+	500+
Low profile fuseholder	26-0350	0.43	0.3224	0.2912



Low profile 20mm fuseholder

A high quality low profile panel mounting 20mm screwdriver release fuseholder moulded in black self extinguishing polycarbonate.

- The fuse cap is opened by flat blade screwdriver
- Maximum fuse rating 6.3A
- D shaped cutout prevents rotation



Technical specification

Dimensions	37.5 x 15mm
Panel cut-out	12 x 12.7mm
Rating	6.3A 250V AC
Contacts	Tinned nickel plated brass
Termination	2.8mm faston/solder
Material	UL94-V0 flame retardant polycarbonate
Approvals	SEMKO, UL, CSA, CE
Manfrs. part no.	CFH04

Type	Order code	1+	100+	500+
Low profile fuseholder	26-0191	0.37	0.2912	0.2652



6.3A 250V AC Quick release 20mm fuseholder

A high quality low profile finger proof fuseholder with quick release bayonet fit fuse caps requiring a flat blade screwdriver to open.

- D shaped cut out prevents rotation
- Maximum fuse rating 6.3A



Technical specification

Dimensions	37.5 x 15mm
Panel cut-out	12 x 12.7mm
Rating	6.3A 250V AC
Contacts	Tinned nickel plated brass
Termination	2.8mm faston/solder
Material	UL94-V0 flame retardant PBT
Approvals	VDE, SEMKO, UL, CSA, CE
Manfrs. part no.	CFH09

Type	Order code	1+	100+	500+
Bayonet release fuseholder	26-0193	0.44	0.364	0.3328



Quick release 20mm fuseholder

A high quality low profile fingerproof fuseholder in black polycarbonate with a quick release bayonet fit fuse cap requiring a flat blade screwdriver to open.

- D shaped cut-out prevents rotation
- 6.3A rating



Technical specification

Dimensions	35.5 x 16mm
Panel cut-out	12 x 12.7mm
Rating	6.3A 250V AC
Contacts	Tinned nickel plated brass
Material	Flame retardant polycarbonate (UL94V-0 rated)
Termination	4.8mm faston/solder tag
Approvals	SEMKO, UL and CSA
Manfrs. part no.	CFH12

Type	Order code	1+	25+	100+	500+
Bayonet release fuseholder	26-7650	0.68	0.5408	0.468	0.3536



Captive carrier 20mm fuseholder

A low profile panel mounting fuseholder which incorporates a cap integral to the main fuseholder body which will not separate on removal of the fuse.

- Solder termination
- Rated 10A 250V
- IP40 protected
- Approved to VDE, UL, CSA and SEMKO
- Bulgin type FX0460



Technical specification

Dimensions	43.4 x 15mm
Panel cut-out	12.8 x 11.94mm
Current Rating	10A
Voltage rating	250V AC
Contact material	Brass, silver plated
Body material	Polyester, UL94V-0
Approvals	UL, CSA, SEMKO

Type	Order code	1+	25+	100+	250+
Captive carrier fuseholder	26-0185	1.38	1.21	1.06	0.936



20mm 5A In-line fuseholder 250V AC white

An in-line fuseholder incorporating a white polypropylene two part connector with a twist action assembly.

- Current rating 5A 250V AC
- Suitable for 20 x 5mm fuses
- Fuse contact maintained with a spring
- Supplied with 285mm loop of 20AWG red insulated wire
- Tin plated brass terminals



Type	Order code	1+	25+	100+	250+
In-line fuseholder	26-1586	0.33	0.3016	0.2704	0.2496

Grab yourself a deal



See our clearance section

www.rapidonline.com/clearance



20mm 20A In-line fuseholder 250V AC black

An in-line fuseholder incorporating a black two part connector with a twist action assembly.

- Current rating 20A 250V AC, 32V DC
- Body and cap moulded from phenolic
- Suitable for 5 x 20mm fuses
- Fuse contact maintained with a spring
- Supplied with 18cm loop of 12AWG red insulated wire
- Nickel plated brass terminals
- Twist action assembly
- **UL flame 94V-1 approved**



Type	Order code	1+	25+	100+	250+
20mm In-line fuseholder	26-1583	0.41	0.3328	0.3016	0.2704



Insulating boots

Designed to fit the panel mounting fuseholders located within this section and provide insulation from shock on rear of fuseholder.

- 3 sizes available
- Material - PVC
- Flame retardant to **UL94V-0**



Technical specification	Order code	Bulgin part number	Overall length	Overall diameter
	26-0186	9820	27.6mm	12.3mm
	26-0187	11327	38.1mm	13.5mm
	26-0188	12392	58.0mm	15.5mm

Type	Order code	1+	10+	25+	100+
9820 Small	26-0186	0.21	0.1872	0.1768	0.1664
11327 Medium	26-0187	0.42	0.3744	0.3536	0.3328
12392 Large	26-0188	0.49	0.4472	0.416	0.3848



In-line 20mm screwfit fuseholder

Available either as standard or supplied with rubber seals to achieve an **IP66** rating.

- Screw terminations
- Fuse contact maintained with a spring
- Current rating 10A
- Voltage rating 50V AC
- Operating temperature: 20°C to 70°C
- Body material - polybutene **UL94HB**



Type	Order code	1+	25+	100+	250+
20 x 5mm Fuseholder	26-5886	0.93	0.8632	0.832	0.8112
20 x 5mm Fuseholder IP66	26-5888	1.86	1.78	1.71	1.61

Order online



Activate your account for online ordering. For instructions go to:

www.rapidonline.com/activate

New products
www.rapidonline.com

25mm Fuses



Mains fuses

25mm (1in) Mains fuses for use in 13A plugs.

- Fully conform to **BS1362**
- **ASTA** certified



Rating	Order code	1+	100+	1000+	5000+
2A	26-0400	0.12	0.0936	0.0853	0.0811
3A	26-0402	0.12	0.0936	0.0853	0.0811
5A	26-0407	0.12	0.0936	0.0853	0.0811
13A	26-0412	0.12	0.0936	0.0853	0.0811



Domestic fuse 6 pack



A range of the most commonly used household fuses, found in many home and office electrical appliances. Suitable for appliances requiring a power supply of 240V rating. Fuses are vital safety devices but they can only do their job properly if you have the correct fuses installed. It seems that whenever you buy a plug, it comes with a 13 amp fuse already installed.

Never assume that it is safe to use a 13A fuse for all appliances. Always check the manufacturer's instructions. The job of a fuse is to blow when something is wrong. It is a simple automatic switch to turn off the appliance.

- Supplied in packs of 2x 3A, 2x 5A, 2x 13A
- For use in 13A plugs
- Offers a saving against buying the fuses separately
- **BS646** approved.

Type	Order code	1+	10+	50+
Domestic fuse 6 pack	26-0409	0.67	0.6136	0.572



Quick blow 25mm x 6.3mm fuses

25mm x 6.3mm (1in x 1/4in) quick blow glass fuses.

- Manufactured to **IEC127**
- Economical alternative to mains plug-top fuses
- Suitable for use with mains fitted terminal block
- Not for use as a replacement fuse for ceramic fuses in 13A plugs
- **Camden CF06325FG** series



Technical specification	Order code	1+	100+	500+	1000+
Rating					
250mA	26-5540	0.10	0.078	0.0582	0.051
500mA	26-5542	0.10	0.078	0.0582	0.051
1A	26-5544	0.10	0.078	0.0582	0.051
2A	26-5546	0.10	0.078	0.0582	0.051
3A	26-5548	0.10	0.078	0.0582	0.051
5A	26-5550	0.10	0.078	0.0582	0.051
7A	26-5552	0.10	0.078	0.0582	0.051
10A	26-5554	0.11	0.0884	0.0686	0.0614



Time lag 20 x 5mm glass fuses

A range of 20 x 5mm time delay cartridge glass tube fuses.

- Surge withstand type
- Rated at 250V AC
- Wide range of current ratings



- Approved to **UL/CSA/SEMKO/VDE/BSI/CCC**

Type	Order code	1+
800mA	26-0579	0.02
8A	26-0589	0.02
12A	26-0591	0.02



Time delay 25mm x 6.3mm Fuses

A range of 25mm x 6.3mm (1in x 1/4in) time delay (T) glass fuses. Manufactured to **IEC127**.

- Economical alternative to mains plug-top fuse
- Suitable for use with mains fused terminal block see **Connectors - terminal blocks** section
- Not for use as a replacement fuse for ceramic fuses in 13A plugs
- **Camden CF06325TG** series



Technical specification	Order code	1+	100+	500+	1000+
Voltage rating					
250V AC					
Breaking capacity:					
<1A					
35A/250V AC					
>1A					
100A/250V AC					
>3A					
200A/250V AC					

Rating	Order code	1+	100+	500+	1000+
250mA	26-5560	0.02			
500mA	26-5562	0.02			
1A	26-5564	0.11	0.0842	0.0655	0.0614
2A	26-5566	0.11	0.0842	0.0707	0.0614
3A	26-5568	0.11	0.0842	0.0707	0.0614
5A	26-5570	0.11	0.0842	0.0707	0.0614
7A	26-5572	0.02			
10A	26-5574	0.11	0.0842	0.0707	0.0645

25mm Fuseholders



In-line screwfit 25mm fuseholders

Available either as standard or supplied with rubber seals to achieve an **IP66** rating.

- Screw terminations
- Fuse contact maintained with a spring
- Current rating 10A
- Voltage rating 50V AC
- Operating temperature - 20°C to +70°C
- Body material - polybutene **UL94HB**



Type	Order code	1+	25+	100+	250+
FX0280 25mm	26-7687	1.20	1.13	1.08	1.02
FX0285 25mm IP66	26-7688	1.88	1.80	1.72	1.62

To save time



Fax any of your previous bulk orders for our quote to:

01206 751188

BULGIN

Chassis mounting 25mm fuseholder

A chassis mounting fuseholder for 25 x 6.3mm (1 x 1/4in) fuses e.g. **BS1362** plug fuses.

- Single hole fixing with anti-rotation spigots
- **Bulgin type FX0331**



Technical specification

Overall length	50mm
Body length	3mm
Width	14.3mm
Height	19.8mm
Maximum rating	13A 250V AC
Base material	Glass filled polyester
Clip material	Phosphor bronze, tin plated
Tab material	Brass, tin plated

Type	Order code	1+	25+	100+	500+
25 x 6.3mm Fuseholder	26-7685	0.94	0.8944	0.8528	0.8216

32mm Fuses

SIBA
FUSES

Quick blow 32 x 6.3mm glass fuses

A range of 32 x 6.3mm glass fuses designed to **IEC127**.

- Quick blow
- Breaking capacity 35A/250V AC
- **Siba 70-059-060** series



Rating	Order code	1+	100+	1000+	5000+
100mA	26-1902	0.67	0.624	0.5928	0.5616
160mA	26-1904	0.56	0.52	0.4888	0.4576
250mA	26-1906	0.51	0.468	0.4368	0.4056
500mA	26-1908	0.15	0.1092	0.0936	0.0832
800mA	26-1910	0.15	0.1092	0.0936	0.0832
1A	26-1912	0.15	0.1092	0.0936	0.0832
1.25A	26-1914	0.15	0.1092	0.0936	0.0832
1.6A	26-1916	0.15	0.1092	0.0936	0.0832
2A	26-1918	0.15	0.1092	0.0936	0.0832
2.5A	26-1920	0.15	0.1092	0.0936	0.0832
3.15A	26-1922	0.15	0.1092	0.0936	0.0832
5A	26-1924	0.15	0.1092	0.0936	0.0832
6.3A	26-1926	0.15	0.1092	0.0936	0.0832
8A	26-1928	0.15	0.1092	0.0936	0.0832
10A	26-1930	0.15	0.1092	0.0936	0.0832
16A	26-1932	0.15	0.1092	0.0936	0.0832

SIBA
FUSES

Ultra rapid 32 x 6.3mm ceramic fuses

Ultra rapid ceramic sand filled fuses with high voltage (700V AC) and breaking capacity (50kA) for use in protection of semiconductors such as triacs, thyristors and diodes as well as use in test probe leads.

- Breaking capacity 50kA
- **UL** recognised (except 16A)
- **Siba 70-125-40** series



Technical specification

Voltage rating	700V AC (up to 1.6A) 500V AC (6.3A upwards)
Breaking capacity	50kA
Voltage drop	1100 to 300mV

Rating	Order code	1+	10+	50+	100+
1A	26-5640	1.26	1.14	1.01	0.9672
1.6A	26-5642	1.26	1.14	1.01	0.9672
6.3A	26-5650	1.26	1.14	1.01	0.9672
8A	26-5652	1.26	1.14	1.01	0.9672
10A	26-5654	1.26	1.14	1.01	0.9672
12.5A	26-5656	1.26	1.14	1.01	0.9672
16A	26-5658	1.26	1.14	1.01	0.9672

SIBA
FUSES

Quickblow 32 x 6.3mm ceramic fuses

Ceramic, sand filled quickblow.

- High breaking capacity
- **UL** recognised (except 16A)
- **Siba 70-065-63** series



Technical specification

Voltage rating	500V AC
Breaking capacity	500mA, 10A-16A 1.0 - 5A (500V AC) 1.0 - 5A (500V DC)
	1500A 50kA 20kA 2000 to 200mV

Rating	Order code	1+	10+	100+	500+
1A	26-5662	0.19	0.1768	0.1664	0.1508
1.25A	26-5663	0.19	0.1768	0.1664	0.1508
2A	26-5664	0.04			
3A	26-5666	0.19	0.1768	0.1664	0.1508
5A	26-5670	0.19	0.1768	0.1664	0.1508
7A	26-5674	0.19	0.1768	0.1664	0.1508
10A	26-5676	0.19	0.1768	0.1664	0.1508
12.5A	26-5678	0.19	0.1768	0.1664	0.1508
16A	26-5680	0.19	0.1768	0.1664	0.1508

CAMDENBOSS
ELECTRONICS & ENCLOSURES

Quick blow 32 x 6.3mm ceramic fuses

Ceramic bodied quick blow 32mm fuses with electroplated end caps.

- These fuses are ideal for use in applications where a high break capacity is needed
- Break capacity, 35A/250V (to 1A), 100A/250V (to 3.5A), 200A/250V (above 3.5A)
- Complies with **IEC127**
- **Camden CF06333CF** series



Rating	Order code	1+	10+	100+	500+
500mA	26-2192	0.14	0.1248	0.1196	0.1092
1A	26-2194	0.14	0.1248	0.1196	0.1092
2A	26-2196	0.14	0.1248	0.1196	0.1092
3.15A	26-2198	0.14	0.1248	0.1196	0.1092
4A	26-2200	0.14	0.1248	0.1196	0.1092
5A	26-2202	0.14	0.1248	0.1196	0.1092
6.3A	26-2204	0.14	0.1248	0.1196	0.1092
8A	26-2208	0.14	0.1248	0.1196	0.1092
10A	26-2210	0.14	0.1248	0.1196	0.1092

SIBA
FUSES

Slow blow 32 x 6.3mm glass fuses

32 x 6.3mm slow blow glass fuses.

- Breaking capacity 35A/250V AC
- **Siba 70-059-061** series



Rating	Order code	1+	100+	1000+	5000+
500mA	26-2160	0.28	0.1872	0.1664	0.156
800mA	26-2162	0.28	0.1872	0.1664	0.156
1A	26-2164	0.28	0.1872	0.1664	0.156
1.25A	26-2166	0.28	0.1872	0.1664	0.156
1.6A	26-2168	0.28	0.1872	0.1664	0.156
2A	26-2170	0.28	0.1872	0.1664	0.156
2.5A	26-2172	0.28	0.1872	0.1664	0.156
3.15A	26-2174	0.28	0.1872	0.1664	0.156
4A	26-2176	0.28	0.1872	0.1664	0.156
5A	26-2178	0.28	0.1872	0.1664	0.156
6.3A	26-2180	0.28	0.1872	0.1664	0.156
8A	26-2182	0.28	0.1872	0.1664	0.156
10A	26-2184	0.28	0.1872	0.1664	0.156
16A	26-2186	0.28	0.1872	0.1664	0.156

SIBA
FUSES

Antisurge 32 x 6.3mm ceramic fuses

Time delay, antisurge (T) ceramic sand filled fuses with high breaking capacity and voltage rating.

- Breaking capacity of 1500A
- **UL** recognised (except 16A)
- **Siba 70-065-65** series



Technical specification

Voltage rating	500V AC
Breaking capacity	1500A at 500V AC
Voltage drop	500 to 150mV

Rating	Order code	1+	100+	500+	1000+
1A	26-5690	0.29	0.2496	0.2288	0.208
2A	26-5692	0.29	0.2496	0.2288	0.208
3.15A	26-5694	0.29	0.2496	0.2288	0.208
5A	26-5696	0.29	0.2496	0.2288	0.208
6.3A	26-5698	0.29	0.2496	0.2288	0.208
8A	26-5700	0.29	0.2496	0.2288	0.208
10A	26-5702	0.29	0.2496	0.2288	0.208
12.5A	26-5704	0.52	0.468	0.4368	0.4056
16A	26-5706	0.52	0.468	0.4368	0.4056

32mm Fuseholders

CAMDENBOSS
ELECTRONICS & ENCLOSURES

Chassis mounting 32mm fuseholder

A chassis mounting fuseholder for 32 x 6.3mm fuses.

- Single hole fixing with anti-rotation spigot
- Terminated by 6.3mm faston terminals



Technical specification

Dimensions	42.4 x 20mm
Rating	30A 250V AC
Contact	High tensile phosphor bronze
Material	UL94V-0 flame retardant phenolic resin
Max. operating temperature	+150°C
Approvals	UL
Manfr. part no.	CFH16

Type	Order code	1+	25+	100+	500+
30A Chassis fuseholder	26-7696	0.41	0.3432	0.312	0.2704

RVFM

32mm In-line fuseholder

An in-line fuse holder that is suitable for 6.35 x 32mm fuses. Comprised of outer casing in two halves and one internal spring. If standard equipment wire is used and wire contacts are required, these must be purchased separately.

Please note: Rapid no longer sell separate wire contacts.



A complete replacement assembly is available from Rapid (see order codes **26-1787** and **26-1788**).

- Manufactured from polypropylene
- Twist action assembly
- Rated at 10A 250V AC

Type	Order code	1+
Fuseholder white	26-5875	0.04

Same day despatch
GUARANTEED!



On all orders placed
between 8am and 8pm
Monday to Friday

BULGIN

In-line 32mm screwfit fuseholders

Available either as standard or supplied with rubber seals to achieve an **IP66** rating.

- Screw terminations
- Fuse contact maintained with a spring
- Current rating 10A
- Voltage rating 50V AC
- Operating temperature 20°C to +70°C
- Body material - polybutene **UL94HB**



Type	Order code	1+	25+	100+	250+
FX0180 32mm	26-1787	1.22	1.16	1.10	1.04
FX0185 32mm IP66	26-1788	1.90	1.82	1.74	1.63



32mm 20A Chassis mounting fuseholder 250V AC

A panel mounting fuseholder with locking nut.

- Accepts 6.4 x 32mm fuses
- Rated 15A 250V AC
- Body and cap moulded from phenolic
- Cap has fuse clearly written in white type
- Screw-in fuseholder released by crosshead screwdriver
- Fuseholder is terminated with quick fit terminals
- Nickel plated brass terminals
- Dimensions 56 x ø20mm
- **UL flame 94V-1** approved



Technical specification
 Voltage rating 20A 250V AC
 Fuse type 6.4 x 32mm
 Mounting Panel
 Cap Screw type
 Mount hole 15mm
 Panel thickness 0.5 - 3.0mm

Type	Order code	1+	25+	100+	250+
32mm Fuseholder	26-1581	0.62	0.5512	0.4805	0.442

BULGIN

Finger release 32mm fuseholder

A chassis mounting fuseholder with a finger release screw cap suitable for 32 x 6.3mm (1 1/4in x 1/4in) fuses.

- Rated at 13A
- Termination via 4.8mm faston tabs
- Supplied with fixing nut
- **Bulgin FX0415**



Technical specification
 Current rating 13A
 Voltage rating 250V AC
 Dimensions 54.4 x ø19mm
 Panel cut-out 16mm
 Power max. 4W
 Body material Glass filled nylon **UL94V-0**
 Contact material Brass, silver plated

Type	Order code	1+	25+	100+	250+
Finger release fuseholder	26-1784	2.26	2.11	1.96	1.92



Free delivery

on all orders over £30 (excl. VAT) (UK mainland only)

BULGIN

Slotted 32mm fuseholder



A chassis mounting fuseholder with a slotted screw cap suitable for 32 x 6.3mm (1 1/4in x 1/4in) fuses.

- Rated at 13A
- Termination via 4.8mm faston tabs
- Supplied with fixing nut
- **Bulgin FX0415/S**

Technical specification
 Current rating 13A
 Voltage rating 250V
 Dimensions 54.4 x ø19mm
 Panel cut-out 16mm
 Power max. 4W
 Body material Glass filled nylon **UL94V-0**
 Contact material Brass, silver plated

Type	Order code	1+	25+	100+	250+
Slotted fuseholder	26-1786	2.10	1.96	1.80	1.77



Quick release 32 x 6.3mm fuseholder



A low profile finger 32 x 6.3mm (1 1/4in x 1/4in) in black polycarbonate with quick release bayonet fit fuse cap requiring release by a blade screwdriver.

- A 'D' shaped cut-out prevents rotation
- Maximum rating 10A 250V AC
- **SCI type R3-44-A**

Type	Order code	1+	25+	100+	250+
Bayonet release 32 x 6.3mm	26-1795	0.34	0.312	0.2912	0.26



Low profile 32 x 6.3mm fuseholder

A very low profile (just 4.0mm) panel mounting fuseholder suitable for 32 x 6.3mm (1 1/4in x 1/4in) fuses. Screwdriver release bayonet fit fuse cap.

- Anti rotation fixing
- Body manufactured in **UL94V-0** rated polycarbonate
- 4.8mm solder/quick connect connections
- Maximum fuse rating 15A
- **UL** and **CSA** approved



Technical specification
 Dimensions 43.6 x 16mm
 Panel cut-out 13.2 x 12mm
 Current Rating 15A

Type	Order code	1+	100+	500+
Low profile fuseholder	26-0354	0.57	0.4472	0.39

European fuses

RVFM

Time lag subminiature fuses

A range of European style radial lead fuses that significantly reduce the footprint on the PCB when compared to a conventional cartridge fuse.

- Rated at 250V AC
- Time lag characteristics
- Suitable for auto-insertion, wave soldering and board washing processes
- Available in a wide range of ratings
- 8.5mm diameter x 8mm height body
- 5.08mm pitch
- Approved to **C-UR/SEMKO/VDE/PSE/CCC**



Type	Order code	1+
160mA	26-0595	0.03
630mA	26-0601	0.03
800mA	26-0602	0.03
1.25A	26-0604	0.03
1.6A	26-0605	0.03
3.15A	26-0608	0.03
4A	26-0609	0.03

Axial lead fuses

Bel Fuse

Axial lead 7.1 x 3.18mm fast blow fuses

A range of fast acting micro fuses.

- Rated at 125V AC
- Tinned copper leads
- **CSA** and **UL 94-V0** rated

Technical specification
 Dimensions 7.1 x 3.18mm
 Lead length 38.1mm
 Temperature range -55°C to +125°C
 Operating time 100% testing current 4hr. min.
 200% testing current 5s max.

Rating	Order code	1+	50+	250+	1000+
500mA	26-1013	0.24	0.1976	0.1768	0.156
1.5A	26-1015	0.24	0.1976	0.1768	0.156
2A	26-1016	0.24	0.1976	0.1768	0.156
3A	26-1017	0.24	0.1976	0.1768	0.156
5A	26-1018	0.24	0.1976	0.1768	0.156
10A	26-1019	0.24	0.1976	0.1768	0.156
15A	26-1021	0.10			

Bel Fuse

Axial lead 7.1 x 3.18mm slow blow fuses

A range of slow blow micro fuses.

- Rated at 125V AC
- Tinned copper leads
- **CSA** and **UL 94-V0** rated

Technical specification
 Dimensions 7.1 x 3.18mm
 Lead length 38.1mm
 Temperature range -55°C to +125°C
 Operating time 100% testing current 4hr. min.
 200% testing current 30s max.

Rating	Order code	1+	50+	250+	1000+
1A	26-1023	0.35	0.3016	0.2704	0.2288
2A	26-1024	0.35	0.3016	0.2704	0.2288
3A	26-1025	0.35	0.3016	0.2704	0.2288
5A	26-1026	0.35	0.3016	0.2704	0.2288
7A	26-1027	0.35	0.3016	0.2704	0.2288



Fast delivery

All orders received by 8pm - Monday to Friday are despatched the same day



Micro miniature axial fuses



Micro miniature epoxy coated axial fuses available in two options; FF- very fast acting or TD - time delay

- Leads are tinned plated copper for PCB mounting
- Rating of fuse is printed on fuse body
- UL and CSA approved

Technical specification					
Voltage rating	125V AC				
Temperature range	-55°C to +125°C				
Body size	2.4 x 7.0mm				
Rating	Order code	1+	25+	100+	1000+
Quick blow					
125mA	26-2550	0.15	0.1248	0.1092	0.0936
250mA	26-2552	0.15	0.1248	0.1092	0.0936
500mA	26-2554	0.15	0.1248	0.1092	0.0936
1A	26-2556	0.15	0.1248	0.104	0.0832
1.5A	26-2558	0.15	0.1248	0.1092	0.0936
2.5A	26-2560	0.15	0.1248	0.1092	0.0936
3A	26-2562	0.15	0.1248	0.1092	0.0936
5A	26-2564	0.15	0.1248	0.1092	0.0936
Time delay					
250mA	26-2568	0.29	0.2496	0.2184	0.1872
500mA	26-2570	0.23	0.208	0.1716	0.1508
1A	26-2572	0.18	0.1508	0.13	0.1196
1.5A	26-2574	0.18	0.1508	0.13	0.1196
2.5A	26-2576	0.18	0.1508	0.13	0.1196
3A	26-2578	0.18	0.1508	0.13	0.1196
5A	26-2580	0.18	0.1508	0.13	0.1196

Automotive fuses



5AG Automotive fuses - pack of five

A range of glass cartridge fuses that are specifically designed for use with high power in-car audio systems.

- 24 carat gold-plated caps
- Available in 20, 30, 40 and 60A rating
- Size 38 x ø10mm 5AG type
- Supplied in packs of 5 in a convenient storage container



Price per pack of 5				
Rating	Order code	1+	10+	100+
20A	26-2390	1.63	1.44	1.23
30A	26-2391	1.63	1.44	1.23
40A	26-2392	1.63	1.44	1.23
60A	26-2393	1.63	1.44	1.23



Automotive fuses

A range of quick blow blade type fuses designed primarily for use in automotive applications although now common in portable electronics.

- Rated at 32V DC with a breaking capacity of 1000A
- All ratings are colour coded for ease of identification



Rating	Colour	Order code	1+	100+	1000+
3A	Violet	26-2300	0.09	0.0728	0.052
5A	Tan	26-2305	0.09	0.0728	0.052
7.5A	Brown	26-2310	0.09	0.0728	0.052
10A	Red	26-2315	0.09	0.0728	0.052
15A	Blue	26-2320	0.09	0.0728	0.052
20A	Yellow	26-2325	0.09	0.0728	0.052
30A	Green	26-2335	0.09	0.0728	0.052



15A In-line automotive fuseholder



An in-line automotive fuseholder incorporating a two part PVC assembly with safety strap.

- Current rating 15A 32V DC
- Suitable for mini quick blow blade type fuses
- Access to the fuse is by means of a snap-fit lid on the top of the holder
- Damp proof and water proof
- Supplied with 125mm of 16AWG red insulated wire each side of fuseholder
- Dimensions 41(L) x 24.5mm(W)

Technical specification					
Voltage rating	15A 32V DC				
Contact resistance	50mΩ max.				
Insulation resistance	500V DC, 100MΩ min.				
Dielectric strength	1000V AC, 1 minute				
Operating temperature	-20°C to + 85°C				

Type	Order code	1+	25+	100+	250+
Automotive fuseholder	26-1584	0.77	0.6344	0.5512	0.4784



20A In-line automotive fuseholder with LED



An in-line automotive fuseholder incorporating a two part PVC assembly with safety strap.

- Current rating 20A 12V-24V DC
- LED on fuseholder lights to show fuse is blown
- Suitable for standard quick blow blade type fuses
- Access to the fuse is by means of a snap-fit lid on the top of the holder
- Damp proof and water proof
- Supplied with 110mm of 14AWG red insulated wire each side of fuseholder
- Dimensions 46(L) x 35mm(W)

Technical specification					
Voltage rating	20A 12V to 24V DC				
Contact resistance	50mΩ max.				
Insulation resistance	500V DC, 100MΩ min.				
Dielectric strength	1000V AC, 1 minute				
Operating temperature	-20°C to + 80°C				

Type	Order code	1+	25+	100+	250+
Automotive fuseholder	26-1585	1.04	0.8736	0.7488	0.6552



Automotive fuseholders

Fuseholders for use with automotive fuses for direct mounting to printed circuit boards available in vertical or right angle options.

- Twin fixing holes are supplied for mounting the fuseholder to the board
- Rated at 35A at 32V



Type	Order code	1+	25+	100+	500+
Vertical fuseholder	26-2360	0.47	0.3848	0.3224	0.286
Right angle fuseholder	26-2365	0.50	0.4264	0.3536	0.3068



Automotive fuseholders

PCB mounting holders for automotive type fuses, available singly or pre-assembled for reduced PCB assembly time.



- Rugged design
- The single clip is supplied in packs of 10

Technical specification					
Dimensions	Single	6.88 x 11.1 x 1.79mm			
	Assembled	19.3 x 10.05 x 4.45mm			
Pitch	5.08mm				
Current rating	15A				
Voltage rating	500V AC				
Contacts	Brass, nickel plated				
Insulator	Glass filled black nylon, UL94V-0				
Temperature range	-50°C to +145°C				
Keystone part nos.	Single:	3522,	Assembled:	3522-2	
Type	Order code	1+	25+	100+	500+
Auto fuse clip (pk of 10)	26-2380	1.09	1.02	0.9776	0.936
Auto fuse holder	26-2385	0.45	0.4264	0.4056	0.3952



Mini automotive fuses

Quick blow mini blade type fuses popular in automotive applications and compact electronic equipment.

- Colour coded for easy identification of value



Technical specification					
Voltage rating	32V				
Breaking capacity	1000A				

Rating	Colour	Order code	1+	100+	1000+
3A	Violet	26-2402	0.12	0.0832	0.052
5A	Tan	26-2404	0.12	0.0832	0.052
7.5A	Brown	26-2406	0.12	0.0832	0.052
10A	Red	26-2408	0.12	0.0832	0.052
15A	Blue	26-2410	0.12	0.0832	0.052
20A	Yellow	26-2412	0.12	0.0832	0.052
25A	Clear	26-2414	0.12	0.0832	0.052
30A	Green	26-2416	0.12	0.0832	0.052



Mini automotive fuseholder

A PCB mounting fuseholder suitable for use with the mini automotive range of fuses.

- Rugged blade design
- Nickel plated contacts rated 15A 250V max.



Technical specification					
Dimensions	14.7 x 4.8 x 8.6mm				
Pitch	3 x 4.0 x 3.7mm				
Current rating	15A				
Voltage rating	250V				
Contact material	Spring brass				

Type	Order code	1+	100+	1000+
Mini fuseholder	26-2470	0.17	0.1456	0.1248

Scheduled orders

Rapid will store your order **FREE OF CHARGE** and then deliver the required amount along with an individual invoice on your specified dates.

Fax your scheduled order and required dates to:



01206 751188

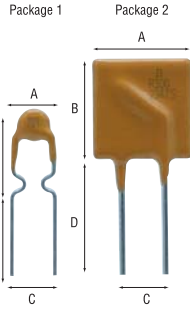
Resettable fuses



Multifuse resettable fuse

The Bourns Multifuse is a resettable device that performs like a fuse under overcurrent conditions but will reset when overcurrent condition has been removed.

- Reset time is approx. 20 seconds
- Switch off time is comparable to a slow blow fuse
- Housed in a flame retardant **UL94V-0** epoxy case
- Operating temperature -40°C to +85°C
- Max. voltage 60VAC/DC rms (to MF-R090), 30V AC/DC rms (MF-R110 to MF-R800)



Technical specification		Package	A	B	C	D	Depth	Lead	Mtr.	Order
hold	I trip									
A*	A**		max.	max.	max.	min.	max.	dia.	part no.	code
0.1	0.2	1	7.4	12.7	5.8	7.6	3.1	0.51	MF-R010	26-4600
0.2	0.4	1	7.4	12.7	5.8	7.6	3.1	0.51	MF-R020	26-4602
0.25	0.5	1	7.4	12.7	5.8	7.6	3.1	0.51	MF-R025	26-4604
0.3	0.6	1	7.4	13	5.8	7.6	3.1	0.51	MF-R030	26-4606
0.4	0.8	1	7.4	13.5	5.8	7.6	3.1	0.51	MF-R040	26-4608
0.5	1	1	7.9	13.7	5.8	7.6	3.1	0.51	MF-R050	26-4610
0.75	1.13	1	10.4	15.2	5.8	7.6	3.1	0.51	MF-R075	26-4632
0.9	1.8	1	10.4	15.2	5.8	7.6	3.1	0.51	MR-R090	26-4614
1.1	2.2	1	6.6	14.2	5.8	7.6	3	0.51	MF-R110	26-4616
1.35	2.7	1	8.9	13.5	5.8	7.6	3	0.51	MF-R125	26-4618
1.6	3.2	1	8.9	15.2	5.8	7.6	3	0.51	MF-R160	26-4620
1.85	3.7	1	10.2	15.7	5.8	7.6	3	0.51	MF-R185	26-4622
2.5	5	1	11.4	18.3	5.8	7.6	3	0.51	MF-R250	26-4624
3	6	2	11.4	17.3	5.9	7.6	3	0.81	MF-R300	26-4626
4	8	2	14	20.1	5.9	7.6	3	0.81	MF-R400	26-4628
5	10	2	16.5	24.9	10.9	7.6	3	0.81	MF-R500	26-4630
6	12	2	19.1	26.7	10.9	7.6	3	0.81	MF-R600	26-4634
7	14	2	21.6	29.2	10.9	7.6	3	0.81	MF-R700	26-4636
8	16	2	24.1	29.7	10.9	7.6	3	0.81	MF-R800	26-4638

*I hold - current at which fuse will not trip
**I trip - current at which fuse will trip

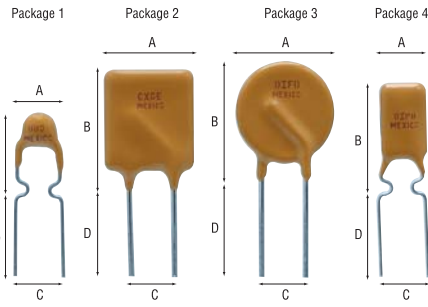
Rating	Order code	1+	25+	100+	250+
0.1A	26-4600	0.38	0.2912	0.26	0.208
0.2A	26-4602	0.44	0.3848	0.3432	0.2808
0.25A	26-4604	0.38	0.3016	0.26	0.1976
0.3A	26-4606	0.34	0.312	0.26	0.2184
0.4A	26-4608	0.40	0.3224	0.2808	0.2184
0.5A	26-4610	0.36	0.3297	0.286	0.2122
0.75A	26-4632	0.38	0.3432	0.312	0.2704
0.9A	26-4614	0.25	0.2184	0.1872	0.1664
1.1A	26-4616	0.37	0.2912	0.2496	0.1976
1.35A	26-4618	0.37	0.2912	0.2496	0.1976
1.6A	26-4620	0.40	0.3224	0.2808	0.2392
1.85A	26-4622	0.46	0.3744	0.3328	0.26
2.5A	26-4624	0.48	0.4056	0.3536	0.2912
3.0A	26-4626	0.51	0.4056	0.364	0.2808
4.0A	26-4628	0.50	0.3848	0.3328	0.26
5.0A	26-4630	0.54	0.416	0.364	0.2808
7.0A	26-4636	0.67	0.6032	0.52	0.468
8.0A	26-4638	0.59	0.468	0.4056	0.3224

Raychem

Polyswitch resettable fuses

The Raychem Polyswitch is a resettable device that performs like a fuse under overcurrent conditions, but is unique in that it will reset. As soon as an overcurrent condition is reached the Polyswitch heats up to its trip temperature.

- Switch off times are comparable to a slow blow fuse
- **UL and TUV** approved



Technical specification		Pack-	A	B	C	D	Depth	Lead	Mtr.	Order
hold	I trip									
A*	A**	VRMS	max.	max.	max.	min.	max.	size	part	code
0.1	0.2	60	7.4	12.7	5.1	7.6	3	0.6	RXE010	26-0695
0.17	0.34	60	7.4	12.7	5.1	7.6	3	0.6	RXE017	26-0840
0.2	0.4	60	7.4	12.7	5.1	7.6	3	0.6	RXE020	26-0700
0.25	0.5	60	7.4	12.7	5.1	7.6	3	0.6	RXE025	26-0705
0.3	0.6	60	7.4	13	5.1	7.6	3	0.6	RXE030	26-0710
0.4	0.8	60	8.9	13.5	5.1	7.6	3	0.6	RXE040	26-0715
0.5	1	60	7.9	13.7	5.1	7.6	3	0.6	RXE050	26-0720
0.65	1.3	60	9.7	14.5	5.1	7.6	3	0.6	RXE065	26-0725
0.9	1.8	60	11.7	15.7	5.1	7.6	3	0.6	RXE090	26-0735
1.1	2.2	30	6.6	14.2	5.1	7.6	3	0.8	RXE110	26-0740
1.1	2.2	30	6.6	14.2	5.1	7.6	3	0.8	RUE110	26-0780
1.35	2.7	30	8.9	13.5	5.1	7.6	3	0.8	RUE135	26-0785
1.6	3.2	30	10.2	15.7	5.1	7.6	3	0.8	RUE160	26-0790
1.85	3.7	30	10.2	15.7	5.1	7.6	3	0.8	RUE185	26-0795
2.5	5	30	11.4	18.3	5.1	7.6	3	0.8	RUE250	26-0800
3	6	30	11.4	17.3	5.1	7.65	3	0.8	RUE300	26-0805
4	8	30	14	20.1	5.1	7.75	3	0.8	RUE400	26-0875
5	10	30	14	24.9	10.2	7.65	3	0.8	RUE500	26-0810
6	12	30	16.5	24.9	10.2	7.6	3	0.8	RUE600	26-0815
7	14	30	19.1	26.7	10.2	7.6	3	0.8	RUE700	26-0820
8	16	30	21.6	29.2	10.2	7.6	3	0.8	RUE800	26-0825

*I hold - current at which fuse will not trip

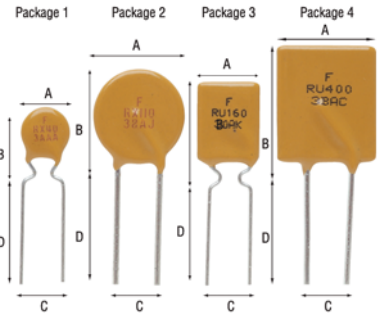
Rating	Order code	1+	50+	100+	500+
0.1A	26-0695	0.29	0.2392	0.1872	0.156
0.17A	26-0840	0.27	0.2184	0.1768	0.1456
0.2A	26-0700	0.27	0.1976	0.1768	0.1456
0.25A	26-0705	0.27	0.1976	0.1768	0.1456
0.3A	26-0710	0.27	0.2184	0.1768	0.1456
0.4A	26-0715	0.28	0.2288	0.1872	0.156
0.5A	26-0720	0.29	0.2392	0.1872	0.156
0.65A	26-0725	0.30	0.2496	0.1976	0.1664
0.9A	26-0735	0.31	0.2496	0.208	0.1664
1.1A	26-0740	0.30	0.2496	0.2288	0.2028
1.1A	26-0780	0.30	0.2496	0.1976	0.1664
1.35A	26-0785	0.30	0.2496	0.1976	0.1664
1.6A	26-0790	0.33	0.2704	0.2184	0.1768
1.85A	26-0795	0.35	0.2912	0.26	0.2392
2.5A	26-0800	0.37	0.3016	0.2496	0.208
3.0A	26-0805	0.40	0.3224	0.26	0.2184
4.0A	26-0775	0.47	0.3848	0.312	0.26
5.0A	26-0810	0.49	0.3952	0.3224	0.2704
6.0A	26-0815	0.52	0.416	0.3432	0.2808
7.0A	26-0820	0.54	0.4368	0.3536	0.3016
8.0A	26-0825	0.57	0.4576	0.3744	0.312



Resettable fuses

Resettable fuses packed in bulk offering a significant saving to the volume user.

- Suitable for a wide range of electronic equipment
- Temperature range -40°C to +85°C
- Approvals **UL, C-UL, TUV**
- Supplied in singles or packs of 100



Technical specification		Package	A	B	C	D	Depth	Lead	Order
hold	I trip								
A*	A**	Rated Voltage	max.	max.	typical	min.	size	size	code
0.1	0.2	60	7.4	12.7	5.1	7.6	3.1	0.51	26-4645
0.17	0.34	60	7.4	12.7	5.1	7.6	3.1	0.51	26-4646
0.2	0.4	60	7.4	12.7	5.1	7.6	3.1	0.51	26-4647
0.25	0.5	60	7.4	12.7	5.1	7.6	3.1	0.51	26-4648
0.3	0.6	60	7.4	13	5.1	7.6	3.1	0.51	26-4649
0.4	0.8	60	7.4	13.5	5.1	7.6	3.1	0.51	26-4650
0.5	1	60	7.9	13.7	5.1	7.6	3.1	0.51	26-4651
0.65	1.3	60	9.7	14.5	5.1	7.6	3.1	0.51	26-4652
0.9	1.8	60	10.4	15.2	5.1	7.6	3.1	0.51	26-4653
1.1	2.2	60	11.7	15.8	5.1	7.6	3.1	0.81	26-4654
1.1	2.2	30	7.4	12.2	5.1	7.6	3	0.51	26-4655
1.35	2.7	30	8.9	13.5	5.1	7.6	3	0.51	26-4656
1.6	3.2	30	8.9	15.2	5.1	7.6	3	0.51	26-4657
1.85	3.7	30	10.2	15.7	5.1	7.6	3	0.51	26-4658
2.5	5	30	11.4	18.3	5.1	7.6	3	0.51	26-4659
3	6	30	11.4	17.3	5.1	7.6	3	0.81	26-4660
4	8	30	14	20.1	5.1	7.6	3	0.81	26-4661
5	10	30	14	24.9	10.2	7.6	3	0.81	26-4662
6	12	30	16.5	24.9	10.2	7.6	3	0.81	26-4663
7	14	30	19.1	26.7	10.2	7.6	3	0.81	26-4664
8	16	30	21.6	29.2	10.2	7.6	3	0.81	26-4665

*I hold - current at which fuse will not trip.

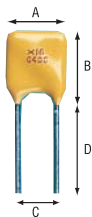
Rating	Order code	1+	5+	10+
0.1A	26-4645	20.42	17.04	14.56
0.17A	26-4646	20.42	17.04	14.56
0.2A	26-4647	20.42	17.04	14.56
0.25A	26-4648	20.42	17.04	14.56
0.3A	26-4649	19.85	16.50	14.11
0.4A	26-4650	21.58	17.94	15.34
0.5A	26-4651	21.58	17.94	15.34
0.65A	26-4652	21.58	17.94	15.34
0.9A	26-4653	21.58	17.94	15.34

Raychem

Low voltage polyswitch resettable fuses

Resettable fuses specifically designed for low voltage applications (up to 16V) which offer improved performance over existing device families in a smaller package.

- UL, CSA and TUV approved



Technical specification		16V							
Maximum working voltage		16V							
Maximum interrupt current		100A							
Maximum surface temperature		125°C in tripped condition							
Operating temperature		-40°C to +85°C							
I hold	I trip	A	B	C	D	Depth lead	Pd	Mfr. part	Order code
A*	A**	max.	max.	max.	min.	max.	dia.	(w)	
3	5.1	7.1	10.2	5.1	4.6	3	1	2.3	RGE300 26-1530
4	6.8	8.9	12.8	5.1	4.6	3	1	2.4	RGE400 26-1532
5	8.5	10.4	13.5	5.1	4.6	3	1	2.6	RGE500 26-1534
6	10.2	10.7	17.1	5.1	4.6	3	1	2.8	RGE600 26-1536
9	15.3	14	20.8	5.1	4.6	3	1	3.3	RGE900 26-1540
11	18.7	17.5	25.1	5.1	4.6	3	1	3.7	RGE1100 26-1542
12	20.4	17.5	28	10.2	4.6	3	1	4.2	RGE1200 26-1544
14	23.8	27.9	27.9	10.2	4.6	3	1	4.6	RGE1400 26-1546

* Hold current. Maximum current at which device will not trip at 20°C
 ** Trip current. Minimum current at which device will always trip at 20°C

Type	Order code	1+	25+	100+	250+
4.0A	26-1532	0.76	0.6552	0.572	0.5096
5.0A	26-1534	0.76	0.6552	0.572	0.5096
9.0A	26-1540	0.97	0.8216	0.7176	0.6552
11.0A	26-1542	1.04	0.9048	0.7904	0.7072
12.0A	26-1544	1.13	0.9776	0.8528	0.7904
14.0A	26-1546	1.23	1.04	0.9152	0.832

Raychem

Surface mount polyswitch resettable fuses

Surface mount resettable fuses in a compact package ideally suited to high density applications.

- Applications include computer peripherals, LANs, PCMCIA cards, USB ports etc
- UL, CSA and TUV approved
- Supplied on 12mm tape in small quantities or on reels of 2000



Technical specification		40A (0.2A 10A)						
Maximum interrupt current		125°C in tripped condition						
Maximum surface temperature		-40°C to +85°C						
Operating temperature								
I hold	I trip	VDC	Package	Length	Height	Width	Po	Order code
A*	A**	max.		max.	max.	max.	(w)	
0.2	0.4	30	1	4.73	3.41	0.81	0.8	26-1560/26-1561
0.75	1.5	13.2	2	4.73	3.41	0.62	0.8	26-1568/26-1569
1.1	2.2	6	2	4.73	3.41	0.62	0.8	26-1572/26-1573

* Hold current. Maximum current at which the device will not trip at 20°C
 ** Trip current. Minimum current at which the device will always trip at 20°C

Price each					
Rating	Order code	1+	25+	100+	250+
0.2A	26-1560	0.35	0.2808	0.2496	0.1976
0.75A	26-1568	0.35	0.2808	0.2496	0.1976
1.1A	26-1572	0.35	0.2808	0.2496	0.1976

Price per reel of 2000		
Rating	Order code	1+
0.75A	26-1569	364.00
1.1A	26-1573	364.00

Thermal fuses

MICROTHERM

Miniature thermal fuse

Non-resettable axial lead fuses, approved to BEAB, VDE, SEMKO, FEMKO and UL specifically designed to provide temperature protection on a wide range of appliances.

- The metal case of the fuse is not isolated from supply
- Dimensions 14.7(L) x 4.0(D); lead diameter 1.0mm



Technical specification		10A 250V AC	
Rating		1200V AC	
Breakdown		72°C	
Opening temperature		98°C	
Max. rupture current		167°C	
Tolerance		184°C	
Resistive		228°C	
Inductive			
		Operating temperature	Manufacturers part number
			Order code
			G4A0107C 26-0850
			G4A01098C 26-0860
			G4A01167C 26-0870
			G4A01187C 26-0875
			G4A01228C 26-0880

Type	Order code	1+	50+	100+	500+
72°C	26-0850	0.44	0.3848	0.3432	0.3016
98°C	26-0860	0.44	0.3848	0.3432	0.3016
167°C	26-0870	0.44	0.3848	0.3432	0.3016
184°C	26-0875	0.25			
228°C	26-0880	0.44	0.3848	0.3432	0.3016

MICROTHERM

Thermal fuses

Miniature, single-shot, radial lead non-resettable thermal fuses that have been designed to provide high temperature, fast protection on all domestic and industrial appliances, where their compact size (5.9 x 6.7 x 2.5mm) makes them ideal for high density mounting.

- Case completely isolated from either of the connecting leads
- Lead length 68mm, lead pitch 5.0mm
- Approved to CSA, DENAN (AC250V), JEAML, UL and VDE

Technical specification		250V AC				
Mfrs. pt. no.	Functioning temp (°C)	Tolerance (°C)	Current rating @250V AC	Holding temp (°C)	Max. temp (°C)	Order code
TAMH0F-L	72	±3	2.5A	50	200	26-0942
TAMH1F-L	81	±2	2.5A	60	200	26-0956
TAMH2F-L	98	±3	3.0A	75	200	26-0930
TAMH3F-L	111	±2	3.0A	95	200	26-0936
TAMH4F-L	123	±2	3.0A	100	200	26-0940
TAMH5F-L	131	±2	3.0A	100	200	26-0946
TAMH6F-L	134	±2	2.5A	110	200	26-0948
TAMH7F-L	140	±2	2.0A	115	200	26-0950

Type	Order code	1+	25+	100+	500+
72°C	26-0942	0.19			
81°C	26-0956	0.19	0.1664	0.1248	0.104
98°C	26-0930	0.19	0.1664	0.1248	0.104
111°C	26-0936	0.19	0.1664	0.1248	0.104
123°C	26-0940	0.19	0.1664	0.1248	0.104
131°C	26-0946	0.19	0.1664	0.1248	0.104
134°C	26-0948	0.19	0.1664	0.1248	0.104
140°C	26-0950	0.19	0.1664	0.1248	0.104

Industrial fuses

Ferraz Shawmut

HRC 8 x 31mm gG General purpose industrial fuses

A range of 8 x 31mm fuses in several ratings that are suitable for industrial applications.

- Ceramic bodies and silver plated ferrules
- Full range protection
- Approved by Lloyds Register of Shipping, Bureau Veritas
- Meets IEC, NFC, and UNE standards



Technical specification		400V AC			
Voltage rating		20kA 400V AC			
Breaking capacity					
Rating	Order code	1+	20+	100+	240+
2A	26-5780	0.35	0.3224	0.3016	0.26
6A	26-5782	0.35	0.3224	0.3016	0.26

Ferraz Shawmut

DIN Rail fuseholder for 8 x 31mm fuses

DIN Rail mounting single pole fuseholder which accommodates 8 x 31mm industrial fuses.

- Incorporates an operating handle for non-load disconnection and electrical isolation
- Fuse replacement without tools
- Approvals: Lloyds Register of Shipping, Bureau Veritas, UL, CSA
- In accordance with IEC269, IEC 947, NFC 60249, 63001, 63210, VDE 0636, UNE 20129



Technical specification		500V AC (500V AC - 25A)			
Voltage rating					
Breaking capacity					
Type	Order code	1+	12+	24+	48+
DIN Fuseholder	26-5786	2.70	2.55	2.18	2.03

New products

www.rapidonline.com



HRC Ultra rapid fuses for digital measuring instruments

These fuses are especially suitable for use with digital measuring instruments such as digital multimeters, etc.

- Available in 440mA, 10 x 35mm and 11A, 10 x 38mm types
- Ultra-rapid response
- Rated voltage 1000V AC/DC
- Rated breaking capacity 30kA



Technical specification

Current rating	Size (mm)	Class	Rated voltage	Rated breaking capacity	Power loss
0.44A	10 x 35	aR	1000V AC/DC	30kA	0.2W
11A	10 x 38	gR	1000V AC/DC	30kA	1.6W

Rating	Size (mm)	Order code	1+	10+	20+	50+
0.4A	10 x 35	26-5790	5.41	4.99	4.52	3.90
11A	10 x 38	26-5791	5.41	4.99	4.52	3.90



HRC 10 x 38mm gL/gG Industrial fuses

European style industrial ceramic fuses.

- Ideal for cable protection and applications where there are no surges to be absorbed
- Approved by **Lloyds Register of Shipping, Bureau Veritas**
- Meets **IEC, NFC, and UNE** standards



Technical specification

Voltage rating	500V AC (32A-400V AC)
Breaking capacity	120kA

Rating	Mfrs. part	Order code	1+	20+	100+	240+
2A	16013	26-5820	0.33	0.2912	0.26	0.2392
4A	16019	26-5822	0.33	0.2912	0.26	0.2392
6A	16023	26-5824	0.33	0.2912	0.26	0.2392
10A	16031	26-5826	0.33	0.2912	0.26	0.2392
16A	16035	26-5828	0.33	0.2912	0.26	0.2392
20A	16037	26-5830	0.33	0.2912	0.26	0.2392
25A	16039	26-5832	0.33	0.2912	0.26	0.2392
32A	16043	26-5834	0.33	0.2912	0.26	0.2392



HRC 10 x 38mm aM (Motor rated) industrial fuses

European style industrial fuses.

- Ideal for applications where an initial surge has to be absorbed (e.g. motor starts)



Technical specification

Voltage rating	500V AC (25A, 32A-400V AC)
Breaking capacity	120kA
Approval Standards	Lloyds Register of Shipping, Bureau Veritas in accordance with IEC 269-2-1, NFC 60.200, 63.210, 63.211 and UNF 21.103

Rating	Mfrs. part	Order code	1+	20+	100+
2A	16513	26-5840	0.45	0.4056	0.364
4A	16519	26-5842	0.45	0.4056	0.364
6A	16523	26-5844	0.45	0.4056	0.364
10A	16531	26-5846	0.45	0.4056	0.364
16A	16535	26-5848	0.45	0.4056	0.364
20A	16537	26-5850	0.45	0.4056	0.364
25A	16539	26-5852	0.45	0.4056	0.364
32A	16543	26-5854	0.45	0.4056	0.364



HRC 10 x 38mm gr Ultra rapid industrial fuses

European style industrial ceramic fuses.

- Ideal for protection of thyristors diodes etc where a very fast response is required



Technical specification

Current rating	Power loss (W)	Pre-arcing Pt	Total I ² t/600V	Manfr. type	Order code
4A	1.1	0.7	6	60-033-05/4A	26-5860
6A	1.6	2	18	60-033-05/6A	26-5862
10A	2.1	5.3	48	60-033-05/10A	26-5864
16A	4.4	10	120	60-033-05/16A	26-5866
20A	5.8	17	200	60-033-05/20A	26-5868
30A	8.2	60	730	60-033-05/30A	26-5872

Rating	Order code	1+	10+	50+	100+
4A	26-5860	2.86	2.64	2.45	2.29
6A	26-5862	2.86	2.64	2.45	2.29
10A	26-5864	2.86	2.64	2.45	2.29
16A	26-5866	2.86	2.64	2.45	2.29
20A	26-5868	2.86	2.64	2.45	2.29
30A	26-5872	2.86	2.64	2.45	2.29

Ferraz Shawmut DIN Rail fuseholders for 10 x 38mm fuses

DIN Rail mounting fuseholders in single pole configuration. Accommodates 10 x 38mm industrial fuses.

- Also suitable for North American Class CC and midget 1 1/2 x 13/32 fuses
- Incorporates an operating handle for non-load disconnection and electrical isolation
- Fuse replacement without tools
- Approvals: **Lloyds Register of Shipping, Bureau Veritas, UL/CSA**
- In accordance with **IEC269, IEC 947, NFC 60249, 63001, 63210, VDE 0636, UNE 20129**



Technical specification

Voltage rating	690V AC (500V AC - 25A) (400V AC - 32A)
----------------	---

Type	Poles	Order code	1+	12+	24+	48+
DIN Fuseholder	Single	26-5880	2.60	2.44	2.29	2.13

Circuit breakers



Thermal PCB circuit breakers

Miniature auto-resetting circuit breakers suitable for protecting equipment against over-current conditions e.g audio speakers, amplifiers and power supplies.

- Moulded in phenolic resin with PCB pins on a 7.5mm pitch
- Dimensions 22 x 12.6 x 6mm
- Rated at 250V AC



Technical specification

Current rating	Max. interrupt current	Trip time overload 200%	Current 300%	Internal resistance	Order code
1.0A	20A	<30s	<5S	<150m	26-1110
1.6A	20A	<30s	<5S	<100m	26-1125
2.2A	20A	<30s	<5S	<75m	26-1140
3.0A	30A	<30s	<5S	<35m	26-1160

Rating	Order code	1+	25+	100+	500+
1A	26-1110	1.29	1.01	0.8736	0.7696
1.6A	26-1125	1.29	1.01	0.8736	0.7696
2.2A	26-1140	1.29	1.01	0.8736	0.7696
3A	26-1160	1.29	1.01	0.8736	0.7696
5A	26-1185	1.29	1.01	0.8736	0.7696



Panel mounting circuit breakers with 0.25in quick connect tabs

A range of competitively priced panel mounting circuit breakers with a wide range of current ratings.

- Single pole
- Push to reset
- Minimum reset time of 1 minute
- Terminated by 0.25in quick connect tabs
- **Techna T16** series



Technical specification

Contact rating	250V AC
Interrupt capacity	1000A
Reset time	1 minute min.
Dimensions	35 x 14.6 x 31mm
Panel hole	11.2 x 10mm

Trip levels

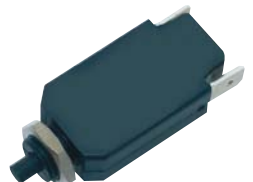
Trip levels	No trip
100%	No trip
135%	in 1 hour
200%	5-30s
300%	1.8-7.6s
400%	1-4.5s
500%	0.6-3s
600%	0.4-2.2s

Rating	Order code	1+	10+	50+
3A	26-7730	1.35	1.05	0.988
4A	26-7732	1.35	1.05	0.988
5A	26-7734	1.35	1.05	0.988
6A	26-7736	1.30	1.01	0.95
7A	26-7738	1.35	1.05	0.988
8A	26-7740	1.35	1.05	0.988
9A	26-7741	1.35	1.05	0.988
10A	26-7742	1.35	1.05	0.988
15A	26-7744	1.35	1.05	0.988
16A	26-7745	1.35	1.05	0.988
20A	26-7746	1.35	1.05	0.988
25A	26-7748	1.35	1.05	0.988
30A	26-7774	1.35	1.05	0.988
Dust cap	26-7776	0.36	0.3536	0.3328



Panel mounting circuit breakers

Panel mounting thermally operated circuit breakers. Single pole push to reset provides reliable trip-free operation on overloads and short circuits.



- A white indicator band on the button shows the tripped condition
- Terminated by 6.3mm fast connect tabs
- **Techna TR11** series

Technical specification

Contact rating	250V AC
Breaking capacity max.	6x In 6A 8x In ->6A
Dimensions	27.5mm x 19mm
Panel hole	10.2mm x 9.4mm
Operational life	1000 cycles @ 2x In
Operational Temperature	+60°C max
Approvals	CSA, UL, VDE

Rating	Order code	1+	10+	50+	100+
1A	26-5200	1.86	1.66	1.51	1.30
2A	26-5202	1.86	1.66	1.51	1.30
3A	26-5204	1.86	1.66	1.51	1.30
4A	26-5206	1.86	1.66	1.51	1.30
5A	26-5208	1.86	1.66	1.51	1.30
6A	26-5210	1.86	1.66	1.51	1.30
7A	26-5212	1.86	1.66	1.51	1.30
Dust cap for TR11	26-5214	0.50	0.468		



Rocker switch circuit breakers

Non-illuminated rocker switch circuit breakers which trips to the off position under overload conditions. These nylon rocker switches have a red indicator band on the switch which is visible when the circuit breaker is in the reset state.

- Designed for snap-in panel mounting with 8mm fast connect tabs to allow speedy assembly
- **Techna M1** series



Technical specification

Contact rating	250V AC
Interrupt capacity	1000A
Dimensions	32mm x 22mm x 13mm
Panel hole	28.5mm x 13.5mm
Trip levels	No trip
100%	No trip
135%	in 1 hour
200%	4-40 secs.
300%	1.2-12 secs.
400%	0.6-5 secs.
500%	0.4-2.8 secs.
600%	0.3-1.8 secs.
Approvals	UL, CSA

Rating	Order code	1+	10+	50+	100+
5A	26-4310	2.07	1.82	1.66	1.56
10A	26-4314	2.07	1.82	1.66	1.56