

Connectors – terminal blocks

New products

IMO

16A 5mm Pitch PCB Interlocking terminal blocks

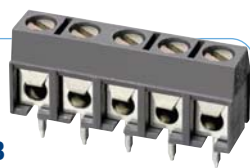
From **£0.11** See page 185



IMO

16A 5mm Pitch PCB Interlocking terminal block low profile

From **£0.12** See page 185



IMO

16A 45 Degree 5mm pitch terminal block

From **£0.23** See page 188



IMO

24A 5mm Pitch rising clamp terminal block

From **£0.31** See page 186



IMO

8A 45 Degree 5mm Pitch rising clamp terminal block

From **£0.28** See page 189



IMO

10A 5mm Pitch pluggable terminal block

From **£0.25** See page 190



3.5/3.81mm PCB	181
5.0/5.08mm PCB	182
7.5/7.62mm PCB	186
10mm PCB	187
Fused	198
High current PCB	187
IDC	181
Pluggable	190
Screwless PCB	188
Shrouded pluggable	198
Terminal strips	198

CamdenBoss 180

7

Associated products

LINI-T

UT90B series: Modern environmental friendly multimeter

See page 1008

From **£37.07**



LINI-T

UT801 series: Bench type digital multimeter

See page 1028

From **£45.60**

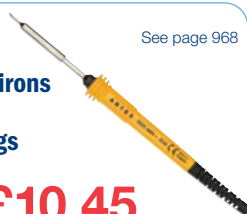


ANTEX

Soldering irons with fitted mains plugs

See page 968

From **£10.45**



RVFM

Electric desoldering tool

See page 985

From **£18.69**



rolson

Automatic wire stripper

www.rapidonline.com

From **£3.01**



rolson

12-in-1 stubby ratchet screwdriver

From **£3.03** See page 817





LEDs & Indicators

Surface Mount LEDs
3mm LEDs
5mm LEDs
Indicators



Miniature Switches

Micro Switches
Tact Switches



Fuses & Fuseholders

Fused Terminal Blocks
PCB Fuseholders
Panel Mount Fuseholder
Chassis Mount Fuseholder
Axial Fuses
Power Fuses
Surface Mount Fuses
Radial Fuses
PTC Self-Resetting Fuses



Interconnection

Ceramic Terminal Blocks
Terminal Strips
Barrier Strips
Wire to board connectors
IC Sockets and Adaptors



Terminal Blocks

PCB
Pluggable
Screwless

Components



Control Products

Limit Switches
Safety Switches
Control Stations
Heavy Duty Footswitches



Relay Bases

8-11 Pin Relay Bases
Din Rail Relay Bases
PCB Mounting Relay Bases



Batteries

AGM Batteries
Electric Vehicle Batteries
Gelled Electrolyte Batteries
Solar Gel Batteries
Battery Balancer
Rechargeable Lantern Batteries
Battery Connectors
Lithium Coil Cells
Rechargeable Ni-MH Batteries
Alkaline Batteries
Zinc-Chloride Batteries
Battery Holders



Transformers

Chassis Mounted
PCB Mounting Encapsulated
PCB Mounting
Transformer Connectors

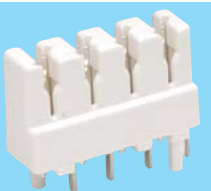
IDC

Krone

Krone IDC terminals

Low-cost PCB mounting IDC connectors.

- Dramatically increases wiring productivity
- Eliminates the need to strip wire, solder or make screw terminations
- Each contact will accept up to two wires using the special insertion tool
- Contacts are arranged on a 5.08mm pitch
- Two fixing posts are provided for heat or ultrasonic staking



Technical specification

Current rating	as connected cable		
Dielectric strength	2kV RMS in		
Service life	50 operations min.		
Contacts	Brass, silver plated		
Colour	White		
Conductor diameter	0.4 to 0.65mm		
Insulation diameter	0.7 to 1.4mm		
Temperature range	-30°C to +120°C		
Manfr. part nos	24-0605	6048-1-001-03	
	24-0610	6048-1-001-04	

Type	BT ref	Order code	1+	100+	500+	1000+
3-way	238A	24-0605	0.36	0.3162	0.2958	0.2448
4-way	238A	24-0610	0.38	0.3366	0.3162	0.2958

RVFM

IDC Terminals



Low-cost PCB mounting IDC connectors.

- Increases wiring productivity by eliminating the need to strip wire, solder or make screw terminations
- Each contact will accept up to two wires using the special tool detailed below
- Contacts arranged on a 5.08mm pitch
- Two fixing posts are provided for heat or ultrasonic welding

Technical specification

Current rating	1A		
Dielectric strength	800V RMS min.		
Contacts	Tin plated brass		
Housing	White PBT (UL94V-0 rated)		
Conductor diameter	0.4 to 0.65mm		
Insulation diameter	0.7 to 1.4mm		
Temperature range	-25°C to +70°C		

Type	BT ref	Order code	1+	100+	500+	1000+
3-way	238A	24-0805	0.16	0.1224	0.102	0.0938
4-way	238A	24-0810	0.20	0.1632	0.1377	0.1244

Krone

IDC Termination tool

A tool specifically designed for use with IDC connectors.

- Hardened steel jaws
- Terminates and trims the wire to the correct length in a single movement
- A wire extractor is also housed in the plastic body of the tool
- BT type 2A



Type	Order code	1+	5+	10+
Krone tool	24-0680	25.96	25.45	24.68

RVFM

Termination tool

A jack and panel termination tool.



- Suitable for use with the range of Krone compatible panels

Type	Order code	1+	3+	5+
Termination tool	19-8300	6.19	5.58	5.15

3.5/3.81mm PCB

CAMDENBOSS ELECTRONICS & ENCLOSURES

Economy interlocking terminal blocks 10A

Miniature wire protector terminal blocks in 2- and 3-way versions which interlock to provide any number of connections.



- Moulded in black flame retardant UL94V-0 polyamide
- 3.5mm pitch
- UL and CSA approved
- Pozidriv screws
- Manufacturers part numbers: CTB3050/2 (2-way) and CTB3051/3 (3-way)

Type	Length	Order code	1+	100+	500+	1000+
2-way Posidriv screw	7mm	21-1700	0.17	0.1326	0.102	0.0969
3-way Posidriv screw	10.5mm	21-1702	0.24	0.204	0.1632	0.1428

Technical specification
 Rating 10A/125V AC
 Insulation resistance >500MΩ
 Wire size 0.75mm²
 Height above 8.4mm
 Width 7.0mm

IMO

8A 3.81mm Pitch plug-in terminal blocks

A wide range of pluggable terminal blocks that can be used in a variety of PCB applications.



The plugs have been designed with a steel yoke to create a reliable connection suitable for use in industrial controls, information technology and other applications requiring a highly reliable interconnection with the flexibility of simplified modifications and installations.

Please note: These terminal blocks are supplied in the manufacturers pack sizes as stipulated in the technical specification. Samples of the range are available on request.

- Pitch: 3.81 mm
- Rated voltage: UL-300V; IEC-130V
- Rated current: UL-8A; IEC-8A
- Wire size: 1.5mm²
- Solid wire size: 28-16AWG
- Stranded wire range: 28-16AWG
- Rated surge voltage: 1.6/ 1.25/ 3kV
- Torque: 0.2Nm
- Screw: M2
- Wire strip length: 6-7mm
- Supplied in the manufacturers pack sizes
- Available in 2, 3, 4, 5, 6, 8, 10 and 12-way options

Type	Mtrs Part	Order code	Pack size
Free plug			
2-way	21.1550M/2	21-4078	100
3-way	21.1550M/3	21-4079	100
4-way	21.1550M/4	21-4080	100
5-way	21.1550M/5	21-4081	100
6-way	21.1550M/6	21-4082	100
8-way	21.1550M/8	21-4083	100
10-way	21.1550M/10	21-4084	100
12-way	21.1550M/12	21-4085	100

Top entry header

2-way	21.155M/2	21-4086	100
3-way	21.155M/3	21-4087	100
4-way	21.155M/4	21-4088	100
5-way	21.155M/5	21-4089	100
6-way	21.155M/6	21-4090	100
8-way	21.155M/8	21-4091	100
10-way	21.155M/10	21-4092	100
12-way	21.155M/12	21-4093	100

Side entry header

2-way	21.155MH/2	21-4094	100
3-way	21.155MH/3	21-4095	100
4-way	21.155MH/4	21-4096	100
5-way	21.155MH/5	21-4097	100
6-way	21.155MH/6	21-4098	100
8-way	21.155MH/8	21-4099	100
10-way	21.155MH/10	21-4100	100
12-way	21.155MH/12	21-4101	100

Type	Order code	1+
2 Way 3.81mm Free Plug	21-4078	0.49
3 Way 3.81mm Free Plug	21-4079	0.75
4 Way 3.81mm Free Plug	21-4080	1.00
5 Way 3.81mm Free Plug	21-4081	1.26
6 Way 3.81mm Free Plug	21-4082	1.49
8 Way 3.81mm Free Plug	21-4083	2.00
10 Way 3.81mm Free Plug	21-4084	2.49
12 Way 3.81mm Free Plug	21-4085	3.00
2 Way 3.81mm Top Header	21-4086	0.15
3 Way 3.81mm Top Header	21-4087	0.24
4 Way 3.81mm Top Header	21-4088	0.31
5 Way 3.81mm Top Header	21-4089	0.38
6 Way 3.81mm Top Header	21-4090	0.45
8 Way 3.81mm Top Header	21-4091	0.59
10 Way 3.81mm Top Header	21-4092	0.75
12 Way 3.81mm Top Header	21-4093	0.89
2 Way 3.81mm Side Header	21-4094	0.15
2 Way 3.81mm Pitch Side Header	21-4095	0.24
4 Way 3.81mm Side Header	21-4096	0.31
5 Way 3.81mm Side Header	21-4097	0.38
6 Way 3.81mm Side Header	21-4098	0.45
8 Way 3.81mm Side Header	21-4099	0.59
10 Way 3.81mm Side Header	21-4100	0.75
12 Way 3.81mm Side Header	21-4101	0.89

CAMDENBOSS ELECTRONICS & ENCLOSURES

6A Interlocking terminal blocks

Miniature rising clamp terminal blocks in two and three way versions available in 3.5mm and 3.81mm pitch options which interlock to provide any number of connections.



- 3.5 and 3.81mm pitch
- Moulded in green Polyamide 6,6 which is flame retardant to UL94V-0
- 16A rating
- UL and CE approved

Technical specification

Rating	6A/250V		
Insulation resistance	>40MΩ		
Wire Size	1mm ²		
Height Above PCB	9.1mm		
Width	7.3mm		
Camden Part Nos.	3.5mm pitch	2-way	CTB0305/2
		3-way	CTB0305/3
	3.81mm pitch	2-way	CTB0308/2
		3-way	CTB0308/3

Type	Pitch	Order code	1+	100+	500+	1000+
2-way	3.5mm	21-1500	0.28	0.2142	0.1938	0.1836
3-way	3.5mm	21-1505	0.42	0.3264	0.2958	0.2754
2-way	3.81mm	21-1655	0.28	0.2142	0.1938	0.1836
3-way	3.81mm	21-1660	0.42	0.3264	0.2958	0.2754

Page 6

Equipment wire





Ultra low profile right angled PCB terminal block 3.5mm

Ultra low profile 90° terminal blocks that are designed for PCB mounting. These connectors feature a double interlock mechanism for increased strength.

- Professional rising clamp terminals
- Choice of 2-way or 3-way
- Moulded in green **UL 94V-0** flame retardant PA66
- Cable entry 0.75mm²
- Captive screws
- Guided pin alignment
- **CE** and **UL** approved



Technical specification

Rating 16A 250V AC
Dielectric strength 2kV/60sec
Insulation resistance ≥5MΩ
Operating temperature -20°C to +125°C
Short period +160°C

Camden part no.	Type	Length	Order code
CTB0355/2	2-way	7mm	21-1765
CTB0355/3	3-way	10.5mm	21-1766

Type	Order code	1+	100+	500+	1000+
Terminal block 2-way	21-1765	0.35	0.2785	0.253	0.2315
Terminal block 3-way	21-1766	0.52	0.4172	0.3794	0.3478



Ultra low profile right angled PCB terminal block 3.81mm

Ultra low profile 90° terminal blocks that are designed for PCB mounting. These connectors feature a double interlock mechanism for increased strength.

- Professional rising clamp terminals
- Choice of 2-way or 3-way
- Moulded in green **UL 94V-0** flame retardant PA66
- Cable entry 0.75mm²
- Captive screws
- Guided pin alignment
- **CE** and **UL** approved



Technical specification

Rating 16A 250V AC
Dielectric strength 2kV/60sec
Insulation resistance ≥5MΩ
Operating temperature -20°C to +125°C
Short period +160°C

Camden part no.	Type	Length	Order code
CTB0358/2	2-way	7.62mm	21-1767
CTB0358/3	3-way	11.43mm	21-1768

Type	Order code	1+	100+	500+	1000+
Terminal block 2-way	21-1767	0.35	0.2785	0.253	0.2315
Terminal block 3-way	21-1768	0.52	0.4172	0.3794	0.3478



10A 3.5mm Terminal blocks

If you mount terminal blocks on PCBs we can probably help you with our fine selection of terminal blocks. Rapid is pleased to offer you these 2 and 3-way 3.5mm pitch vertical moulded types that are UL94V-0 approved.



Current carrying capacity of these pluggable terminal blocks are 10A per pole. They feature a tin-plated pin header and a Phosphor bronze wire guard. The terminals are housed in moulded green flame proof polyamide PA66.

- 3.5mm pitch
- Slotted screws
- Rated voltage 130V
- Rated current 10A
- Moulded Housing in green flame retardant PA66
- Screws zinc plated steel
- Pin header tin plated brass

- Wire guard Phosphor bronze
- **UL94V-0** and **CSA** approved

Technical specification

Rated voltage 130V
Rated current 10A
Pitch 3.5mm
Screws M2 slotted, zinc plated steel
Rated current at 130V 10A
Temperature rating -40°C to +105°C
Housing Moulded in green flame retardant PA66 / UL94V-0
Wire guard Phosphor bronze
Pin header Tin plated brass
Strip length 5 - 6mm
Wire range 1.0mm²

Type	Order code	1+	100+	500+	1000+
2-way Terminal block	21-3000	0.12	0.0806	0.0683	0.0571
3-way Terminal block	21-3001	0.17	0.1204	0.102	0.0847



10A 3.5mm Terminal blocks

If you mount terminal blocks on PCBs we can probably help you with our fine selection of terminal blocks. Rapid is pleased to offer you this 3-way 3.5mm pitch vertical moulded type that is UL94V-0 approved.



Current carrying capacity of these pluggable terminal blocks are 10A per pole. They feature a tin-plated pin header and a Phosphor bronze wire guard. The terminals are housed in moulded blue flame proof polyamide PA66.

- 3.5mm pitch
- Slotted screws
- Rated voltage 130V
- Rated current 10A
- Moulded Housing in green flame retardant PA66
- Screws zinc plated steel
- Pin header tin plated brass
- Wire guard Phosphor bronze
- **UL94V-0** and **CSA** approved
- Supplied in blue

Technical specification

Rated voltage 130V
Rated current 10A
Pitch 3.5mm
Screws M2 slotted, zinc plated steel
Rated current at 130V 10A
Temperature rating -40°C to +105°C
Housing Moulded in green flame retardant PA66 / UL94V-0
Wire guard Phosphor bronze
Pin header Tin plated brass
Strip length 5 - 6mm

Type	Order code	1+	100+	500+	1000+
3 Way 10A Term. Block 3.5mm	21-2999	0.17	0.118	0.10	0.083

5.0/5.08mm PCB



20A Interlock terminal blocks

These terminal blocks from Rapid provide optimal control panel circuit connectors for every type of application. The terminals are housed in moulded green polyamide PA66 and approved to UL94V-0.



- Supplied with rising clamps
- Available with either 2 or 3-way pins
- Available in 5.0mm and 5.08 pitch
- Slotted screws
- Rated current 20A
- Moulded Housing in green flame retardant PA66
- Screws zinc plated steel
- Pin header tin plated brass
- Wire guard nickel plated brass
- **UL94V-0** and **CSA** approved

Technical specification

Rated voltage 250-450V
Rated current 20A
Pitch 5.0mm or 5.08mm
Screws M3 slotted, zinc plated steel
Rated current at 250 - 450V 20A
Temperature rating -40°C to +105°C
Housing Moulded in green flame retardant PA66 / UL94V-0

Wire guard Nickel plated brass
Pin header Tin plated brass
Strip length 7mm
Wire range 0.5 - 2.5mm²

UL94V-0 and **CSA** approved

2-way/DG129-5.0-2p	Order code 21-3009
3-way/DG129-5.0-3p	Order code 21-3010
2-way/DG129-5.08-2p	Order code 21-3011
3-way/DG129-5.08-3p	Order code 21-3012

Type	Order code	1+	100+	500+	1000+
2-way 5.00mm pitch	21-3009	0.24	0.1744	0.1489	0.1224
3-way 5.00mm pitch	21-3010	0.16			
2-way 5.08mm pitch	21-3011	0.11			
3-way 5.08mm pitch	21-3012	0.16			

Page 812

Screwdriver sets



15A 5.08mm Terminal blocks

These rising clamp terminal blocks from Rapid provide optimal control panel circuit connectors for every type of application. The terminals are housed in moulded green polyamide PA66 and approved to UL94V-0.



- Supplied with rising clamps
- Available with either 2 or 3-way pins
- Pitch 5.08mm
- Slotted screws
- Rated current 15A
- Moulded Housing in green flame retardant PA66
- Screws zinc plated steel
- Pin header tin plated brass
- Wire guard nickel plated brass
- **UL94V-0** and **CSA** approved

Technical specification

Rated voltage 250-450V
Rated current 15A
Pitch 5.08mm
Screws M2.5 slotted, zinc plated steel
Rated current at 250V 15A
Temperature rating -40°C to +105°C
Housing Moulded in green flame retardant PA66 / UL94V-0
Wire guard Nickel plated brass
Pin header Tin plated brass
Strip length 6mm
Wire range 1.5mm²

UL94V-0 and **CSA** approved

3-way/DG127-5.08-3p	Order code 21-3016
---------------------	--------------------

Type	Order code	1+	100+	500+	1000+
3-way Terminal block	21-3016	0.31	0.2162	0.1836	0.152



Free delivery

on all orders over £30
(excl. VAT)
(UK mainland only)



16A Interlocking terminal blocks

Quality interlocking PCB terminal blocks on a standard 5mm pitch.

- 5mm pitch
- 16A rating
- Fitted with wire protectors
- Height of 10mm
- Low profile package
- Metway 650tds series



Technical specification

Current rating	16A
Conductor size	1.5mm ²
Moulding material	Grey polycarbonate (UL94V-0)
Wire protector material	Nickel plated bronze
Insert/pin material	Tinned brass
Height	10mm
Width	7.5mm
Operating temperature	+120°C max.
Approvals	UL

Type	Order code	1+	100+	500+	1000+
2-way	21-0112	0.15	0.1183	0.1071	0.0969
3-way	21-0114	0.23	0.1826	0.1663	0.1499
4-way	21-0116	0.28	0.2091	0.1877	0.1703
6-way	21-0118	0.41	0.3325	0.2897	0.257
12-way	21-0120	0.78	0.6324	0.5569	0.5141

Lumberg

15A PCB Interlocking terminal blocks with wire protector



A range of competitively priced PCB terminal blocks with wire guard and a side interlock facility.

- Interlocking terminals will provide any number of connections.
- Wire guard design insures that the wire will be protected during the termination phase of wiring.
- 15A rating
- Available in 4 options
- Moulded in light grey Polyamide 6,6
- UL and CSA approved
- RoHS compliant
- Lumberg type KRM

Technical specification

Pitch	5mm
Voltage rating	250V
Current rating	15A
Screw	M2.5 galvanised steel
Wire thickness max.	2.5mm ²
Dimensions	14(H) x 8.3mm(W)
PCB hole	1.3mm
Housing	Light grey polyamide 6.6
Temperature range	-25°C to +100°C

Type	Order code	1+	50+	100+	200+
2-way Block	21-0002	0.30	0.2448	0.204	0.153
3-way Block	21-0003	0.45	0.3774	0.306	0.2346
4-way Block	21-0004	0.59	0.51	0.408	0.3162



16A Interlocking terminal blocks - CamdenBoss

High quality, low-cost PCB terminal blocks offering wide versatility in a low profile package.

- 16A rating
- Stainless steel wire protectors fitted
- Height 10mm
- 5mm pitch
- Camden CTB5200 series



Technical specification

Current rating	16A
Maximum voltage	380V AC
Clamp screw	M2.5 steel x5 zinc plated steel and colour passivated
Pin terminal	5µ tinned, nickel plated copper flash brass
PCB hole size	1.3mm
Conductor acceptance	1.5mm ²
Colour	Black (UL94V-0 PA66)
Temperature range	-30°C to +125°C

Mfr. Part Nos.

2-way	CTB5201/2BK
3-way	CTB5201/3BK
4-way	CTB5201/4BK
6-way	CTB5201/3BK
12-way	CTB5201/12BK

Type	Length	Order code	1+	100+	500+	1000+
2-way	10mm	21-0461	0.14	0.1122	0.0816	0.0745
3-way	15mm	21-0463	0.17	0.1428	0.1163	0.10
4-way	20mm	21-0465	0.29	0.2142	0.1785	0.154
6-way	15mm	21-0467	0.36	0.255	0.2244	0.204
12-way	60mm	21-0469	0.73	0.5406	0.458	0.4039



16A Interlocking terminals

Standard profile interlocking PCB mounting terminal blocks.



- 5mm pitch
- 16A rating
- Blocks interlock to give any number of connections
- UL and CSA approved
- Wire protectors
- Height: 12.6mm
- Camden CTB1201/BK series

Technical specification

Current rating	16A
Maximum voltage	250V ac
Clamp screw	M3 steel, 5 zinc and colour passivated
Pin terminal	5µ tinned, nickel plated copper flash brass
PCB hole size	1.1mm
Conductor acceptance	2.5mm ²
Moulding	UL94V-0 flame retardant black PA66
Temperature range	-30°C to +125°C

Type	Order code	1+	100+	500+	1000+
2-way	21-0471	0.13	0.1122	0.0877	0.0765
3-way	21-0473	0.16	0.1428	0.1204	0.1102



16A Interlocking terminal blocks - TruConnect

5mm pitch PCB terminal blocks that interlock to give any number of connections.



- Current rating - 16A
- Maximum voltage - 250V
- Housing - PBT (30% glass filled)
- Screw - M2.6, steel, zinc plated

Type	Order code	1+	100+	500+	1000+
2-way	21-0440	0.08	0.0612	0.0408	0.0357
3-way	21-0442	0.12	0.0816	0.0612	0.051



18A 5.0mm Terminal blocks

These terminal blocks from Rapid provide optimal control panel circuit connectors for every type of application. Voltage and current carrying capacity of these pluggable terminal blocks is 250V 18A per pole.



They feature a tin-plated brass pin header and a nickel plated brass wire guard. These terminals are offered in 2 and 3-way options with a 5.0mm pitch. The terminals are housed in moulded green flame proof polyamide PA66 and approved to UL94V-0.

- 5.0mm pitch
- Slotted screws
- Rated current 18A
- Moulded Housing in green flame retardant PA66
- Screws zinc plated steel
- Pin header tin plated brass
- Wire guard nickel plated brass
- UL94V-0 and CSA approved

Technical specification

Rated voltage	250V
Rated current	18A
Pitch	5.0mm
Screws	M2.5 slotted, zinc plated steel
Rated current at 250V	18A

Temperature rating

Housing	-40°C to +105°C
Wire guard	Moulded in green flame retardant PA66 / UL94V-0
Pin header	Nickel plated brass
Strip length	Tin plated brass
Wire range	7mm
	2.5mm ²
	UL94V-0 and CSA approved

Type	Order code	1+	100+	500+	1000+
2-way Terminal block	21-3002	0.20	0.1438	0.1224	0.101
3-way Terminal block	21-3003	0.31	0.2162	0.1836	0.152



20A 5mm End stack terminal block

A range of quality terminal blocks suitable for all types of application. Rated at 450V 20A per pole they feature a tin-plated brass pin header and a stainless steel wire guard. These terminals are offered in 2, 3, 4, 6 and 12-way options with a 5.0mm pitch. The terminals are housed in moulded blue flame proof polyamide PA66 and approved to UL94V-0.



- 5.0mm pitch
- Slotted screws
- Rated current 20A
- Moulded Housing in blue flame retardant PA66
- Screws zinc plated steel
- Pin header tin plated brass
- Wire guard stainless steel
- UL94V-0 and CSA approved

Technical specification

Rated voltage	450V
Rated current	20A
Pitch	5.0mm
Screws	M2.5 slotted, zinc plated steel
Rated current at 450V	20A
Temperature rating	-30°C to +120°C
Housing	Moulded in blue flame retardant PA66/UL94V-0
Wire guard	Stainless steel
Pin header	Tin plated brass
Strip length	5 - 6mm
Wire range	2.5mm ²
	UL94V-0 and CSA approved

2-way/DG305-5.0-2p	Order code 21-3004
3-way/DG305-5.0-3p	Order code 21-3005
4-way/DG305-5.0-4p	Order code 21-3006
6-way/DG305-5.0-6p	Order code 21-3007
12-way/DG305-5.0-12p	Order code 21-3008

Type	Order code	1+	100+	500+	1000+
2-way Terminal block	21-3004	0.12	0.0877	0.0745	0.0612
3-way Terminal block	21-3005	0.18	0.1316	0.1112	0.0918
4-way Terminal block	21-3006	0.26	0.1785	0.152	0.1326
6-way Terminal block	21-3007	0.38	0.2652	0.2254	0.204
12-way Terminal block	21-3008	0.77	0.4692	0.4284	0.408



Interlocking terminal blocks 20A, 5.00mm (5.08)mm pitch

These terminal blocks provide optimal control panel circuit connectors for all types of application. They are available in 2-way and 3-way versions that can be interlinked to make any number ways. The 20A rating means these terminal blocks are able to carry any current from 0 to 20 amps. The terminals are housed in moulded green polyamide PA66.



- Supplied with rising clamps
- Available with either 2 or 3-way pins
- Available in 5.0mm and 5.08 pitch
- Slotted screws
- Rated current 20A
- Moulded Housing in green flame retardant PA66
- Screws zinc plated steel
- Pin header tin plated brass
- Rising clamp: nickel plated brass
- UL94V-0 approved

Type	Order code	1+	100+	500+	1000+
2-way 20A 5mm pitch	21-4001	0.27	0.1836	0.1571	0.1285
3-way 20A 5mm pitch	21-4002	0.38	0.2652	0.2254	0.204
2-way 20A 5.08mm pitch	21-4003	0.26	0.1775	0.151	0.1244
3-way 20A 5.08mm pitch	21-4004	0.39	0.2652	0.2254	0.1856

Downloadable datasheets
www.rapidonline.com

TruConnect

Terminal block - 12A, 5.08mm pitch

These terminal blocks provide optimal control panel circuit connectors for all types of application. They are available with a 12A rating in 2-way and 3-way versions. The terminals are housed in moulded green polyamide PA66.

- Supplied with rising clamps
- Pitch 5.08mm
- Slotted screws
- Rated current 12A
- Moulded housing in green flame retardant PA66
- Screws zinc plated steel
- Pin header tin plated brass
- Rising clamp: nickel plated brass
- Available in 2 or 3-way options
- **UL94V-0** and approved



Type	Order code	1+	100+	500+	1000+
2-way 12A 5.08mm pitch	21-4005	0.20	0.1438	0.1224	0.101
3-way 12A 5.08mm pitch	21-4006	0.31	0.2162	0.1836	0.152

TruConnect

Terminal block - 10A, 5.08mm pitch

These terminal blocks provide optimal control panel circuit connectors for all types of application. They are available with a 10A rating in 2-way and 3-way versions. The terminals are housed in moulded green polyamide PA66.

- Supplied with rising clamps
- Available with either 2 or 3-way pins
- Pitch 5.08mm
- Slotted screws
- Rated current 10A
- Moulded Housing in green flame retardant PA66
- Screws zinc plated steel
- Pin header tin plated brass
- Rising clamp: nickel plated brass
- **UL94V-0**



Type	Order code	1+	100+	500+	1000+
2-way 10A 5.08mm pitch	21-4007	0.21	0.152	0.1285	0.1061
3-way 10A 5.08mm pitch	21-4008	0.31	0.2162	0.1836	0.152

TruConnect

2 Tier terminal blocks - 10A 5.00mm pitch

These terminal blocks are one of the best ways to satisfy your requirements. The terminal blocks consist of a 2-tier block with 4 and 6-way and 5.0mm pitch options. These rising clamp terminal blocks from Rapid will provide optimal control panel circuit connectors for every type of application. Current carrying capacity of these pluggable terminal blocks is rated at 10A at 300V per pole.

- Supplied with rising clamps
- Available with either 4 or 6-way pins
- Pitch 5.00mm
- Slotted screws
- Rated current 10A
- Moulded Housing in green flame retardant PA66
- Screws zinc plated steel
- Rising clamp tin plated brass
- **UL94V-0** approved



Type	Order code	1+	100+	500+	1000+
4-way 10A 5.00mm pitch	21-4009	0.58	0.4141	0.3519	0.2897
6-way 10A 5.00mm pitch	21-4010	0.83	5.91	0.5018	0.4131

CAMDENBOSS
ELECTRONICS & ENCLOSURES

14A Low Profile Terminal Blocks

Miniature rising clamp terminal blocks in two and three way versions which interlock to provide any number of connections.



- Moulded in green Polyamide 6,6 which is flame retardant to **UL94V-0**
- **UL** and **CE** approved
- **5mm pitch**
- 14A rating
- Professional Rising Clamp
- Approved **VDE**
- **Manufacturers part numbers:** 2-way **CTB0500/2**, 3-way **CTB0500/3**

Type	Order code	1+	100+	500+
2-way 17.5A	21-1540	0.26	0.1938	0.1785
3-way 17.5A	21-1545	0.38	0.2907	0.2652

CAMDENBOSS
ELECTRONICS & ENCLOSURES

Low Profile Interlocking terminal blocks 17.5A/ 250V AC

Miniature rising clamp terminal blocks in two and three way versions which interlock to provide any number of connections.

- Moulded in green flame retardant **UL94V-0** Polyamide 6,6
- **UL** and **CSA** approved
- **5.08mm pitch**
- 17.5A rating
- **Manufacturers part numbers:** 2-way **CTB0508/2**, 3-way **CTB0508/3**



Type	Order code	1+	100+	500+	1000+
2-way 17.5A	21-1720	0.26	0.1938	0.1785	0.1632
3-way 17.5A	21-1722	0.38	0.2907	0.2652	0.2448

CAMDENBOSS
ELECTRONICS & ENCLOSURES

5.0mm pitch Interlocking terminal blocks 20A

Miniature rising clamp terminal blocks in two and three way versions which interlock to provide any number of connections.

- **5mm pitch**
- 20A rating
- Moulded in green Polyamide 6,6 which is flame retardant to **UL94V-0**
- **UL, VDE** and **CE** approved
- **Mfrs. part Nos.** 2-way **CTB0100/2**, 3-way **CTB0100/3**



Type	Order code	1+	100+	500+	1000+
2-way	21-1550	0.27	0.1938	0.1734	0.1428
3-way	21-1555	0.34	0.255	0.2244	0.2142

CAMDENBOSS
ELECTRONICS & ENCLOSURES

Standard right angled PCB terminal block 5.08mm

Standard profile 90° terminal blocks that are designed for PCB mounting. These connectors feature a double interlock mechanism for increased strength.

- Professional rising clamp terminals
- Choice of 2-way or 3-way
- Moulded in green **UL 94V-0** flame retardant PA66
- Cable entry 2.5mm²
- PCB hole size ø1.3mm



- **RU, cUL** and **CE** approved

Technical specification	Rating	20A 250V AC
Dielectric strength	2.5kV/60sec	
Insulation resistance	≥5MΩ	
Operating temperature	-20°C to +125°C	
Short period	+160°C	
>Camden part no.	Type	Length
CTB0158/2	2-way	10.16mm
CTB0158/3	3-way	15.24mm
	Order code	
	21-1773	
	21-1774	

Type	Order code	1+	100+	500+	1000+
Terminal block 2-way	21-1773	0.30	0.2387	0.2173	0.1989
Terminal block 3-way	21-1774	0.45	0.359	0.3264	0.2989

CAMDENBOSS
ELECTRONICS & ENCLOSURES

5.08mm pitch Interlocking terminal blocks 20A

Standard rising clamp two and three way PCB terminal blocks, interlockable to provide larger multiples.

- Moulded in green **UL94V-0** flame retardant Polyamide 6,6
- 20A rating
- **5.08mm pitch**
- **Manufacturers part numbers:** 2-way **CTB0108/2**, 3-way **CTB0108/3**



Technical specification	Rating	20A 250V AC
Wire size	2.5mm ²	
Pitch	5.08mm	
PCB hole diameter	1.3mm	
Maximum temperature	+125°C	
Moulding material	Polyamide 6,6 (UL94V-0)	
Screws	M3 steel zinc, colour passivated and tropicalised	
Pin/terminal	5 micron tinned nickel plated brass	
Dimensions:	height	13.8mm
	width	9.8mm

Type	Order code	1+	100+	500+	1000+
2-way	21-1590	0.23	0.1887	0.1683	0.153
3-way	21-1592	0.36	0.2856	0.255	0.2142

TruConnect

Interlocking terminal blocks 16A 5mm pitch

Miniature interlocking rising clamp terminal blocks.

- **5mm pitch**
- 2 and 3-way versions
- Interlock to provide any number of connections

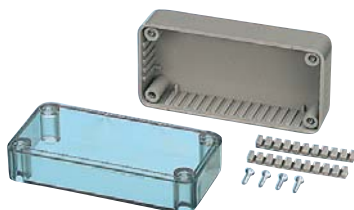


Technical specification	Rating	16A/250V			
Wire acceptance	2.5mm ²				
Height above PCB	14.0mm				
Width	10.2mm				
Solder pin	brass, 0.8t, tin plated				
Pin dimension	0.8mm x 0.9mm				
Screw	M2.5, Steel, Zinc plated				
Housing	green Polyamide 6,6				
Type	Order code	1+	100+	500+	1000+
2-way 16A	21-1800	0.15	0.1122	0.0989	0.0887
3-way 16A	21-1802	0.22	0.1683	0.1479	0.1346

Enclosures section

CAMDENBOSS
ELECTRONICS & ENCLOSURES

Enclosures





Live help

If you have a problem when shopping online log on and chat to a member of the team

www.rapidonline.com



End-stackable terminal blocks 24A

Terminal blocks with wire protector which are end-stackable and maintain the 5mm pitch.

- 5mm pitch
- 24A rating
- Moulded in grey UL94V-0 rated Lexan
- UL, VDE and CE approved



Technical specification

CTB1500/2	2-way	21-1560
CTB1500/3	3-way	21-1565
CTB1500/4	4-way	21-1570
CTB1500/6	6-way	21-1575
CTB1500/12	12-way	21-1580
Rating	24A/240V AC	
Temperature rating	+120°C	
Insulation resistance	>40MΩ	
Wire size	4mm ²	
PCB hole size	1.3mm dia.	
Height above PCB	13mm	
Width	9mm	

Type	Order code	1+	100+	500+	1000+
2-way 24A	21-1560	0.14	0.1122	0.102	0.0918
3-way 24A	21-1565	0.21	0.1683	0.153	0.1377
4-way 24A	21-1570	0.29	0.2244	0.204	0.1836
6-way 24A	21-1575	0.43	0.3366	0.306	0.2754
12-way 24A	21-1580	0.70	0.6018	0.5712	0.5304



2-tier Interlocking terminal blocks

4 and 6-pole interlocking rising clamp terminal blocks with a 5mm pitch. Second row provides terminals where lateral space is limited.

- 5mm pitch
- 24A rating
- Polyamide UL94V-0
- UL, IMQ and CE approved
- Camden part no. CTBDDVG/2



Technical specification

Rated current	24A
Rated voltage	380V
Cable size max.	4.0mm ²
Header solder pins	Copper alloy
Insulator material	UL94V-0 flame retardant Lexan

Type	Order code	1+	25+	100+	250+
4-way	21-2220	1.01	0.816	0.7446	0.6834
6-way	21-2222	1.52	1.22	1.12	1.02



Interlocking terminal blocks 16A

16A terminal blocks which interlock to provide any number of connections.

- 5mm pitch
- Cable wire protector



Technical specification

Rating	16A/250V	Solder pin	brass, tin plated
Wire acceptance	2.5mm ²	Pin dimension	1.0mm x 0.6mm
Height above PCB	12.5mm	Screw	M3, steel, zinc plated
Width	9mm	Wire protector	0.2t, stainless steel
Housing	PBT (30% glass filled)		

Type	Order code	1+	100+	500+	1000+
2-way 16A	21-1810	0.08	0.0622	0.0551	0.0459
3-way 16A	21-1812	0.11	0.0867	0.0755	0.0632
4-way 16A	21-1814	0.17	0.1326	0.1142	0.0918
6-way 16A	21-1816	0.23	0.1785	0.155	0.1275
12-way 16A	21-1818	0.40	0.3162	0.2754	0.2244



16A 5mm Pitch PCB Interlocking terminal blocks

These interlocking terminal blocks have the facility for connecting multiple connectors. They are able to carry any current from 0 to 16A. This product provides the most economical way of using a PCB terminal block. The blocks are extremely suitable for use in security, lighting and electronic industries.



Please note: These terminal blocks are supplied in the manufacturers pack sizes as stipulated in the technical specification. Samples of the range are available on request.

- Pitch: 5mm
- Rated voltage: UL-300V; IEC-250V
- Rated current: UL-16A; IEC-24A
- Wire size: 2.5mm²
- Wire range: 12-22AWG
- Insulation withstand voltage: 1000V min
- Insulation resistance: 1000M57 at 500V
- Torque: 0.5Nm
- Temperature range: -40°C to +105°C
- Wire strip length: 6-7mm
- Supplied in the manufacturers pack sizes
- Available in 2, 3, 4, 6, 8, 10, and 12-way options

Technical specification

Type	Mftrs Part	Order code	Pack size
2-way	20.101M/2	21-4011	100
3-way	20.101M/3	21-4012	100
4-way	20.101M/4	21-4013	100
6-way	20.101M/6	21-4014	100
8-way	20.101M/8	21-4015	100
10-way	20.101M/10	21-4016	500
12-way	20.101M/12	21-4017	100

Type	Order code	1+
2 Way 16A 5mm Pitch	21-4011	0.11
3 Way 16A 5mm Pitch	21-4012	0.18
4 Way 16A 5mm Pitch	21-4013	0.24
6 Way 16A 5mm Pitch	21-4014	0.35
8 Way 16A 5mm Pitch	21-4015	0.47
10 Way 16A 5mm Pitch	21-4016	0.58
12 Way 16A 5mm Pitch	21-4017	0.70



16A 5mm Pitch PCB Interlocking terminal block low profile

These interlocking terminal blocks have the facility for connecting multiple connectors. They are low profile and able to carry any current from 0 to 16A. This product provides the most economical way of using a PCB terminal block. The blocks are extremely suitable for use in security, lighting and electronic industries.



Please note: These terminal blocks are supplied in the manufacturers pack sizes as stipulated in the technical specification. Samples of the range are available on request.

- Pitch: 5mm
- Rated voltage: UL-300V; IEC-350V
- Rated current: UL-16A; IEC-17.5A
- Wire size: 1.5mm²
- Wire range: 14-20AWG
- Insulation withstand voltage: 1000V min
- Insulation resistance: 1000M57 at 500V
- Torque: 0.4Nm
- Temperature range: -40°C to 105°C
- Wire strip length: 5-6mm
- Supplied in the manufacturers pack sizes
- Available in 2, 3, 4, 5, 6, 7, 8, 9, 10, and 12-way options

Technical specification

Type	Mftrs Part	Order code	Pack size
2-way	20.501M/2	21-4018	100
3-way	20.501M/3	21-4019	100
4-way	20.501M/4	21-4020	100
5-way	20.501M/5	21-4021	100
6-way	20.501M/6	21-4022	100
7-way	20.501M/7	21-4023	100
8-way	20.501M/8	21-4024	100
9-way	20.501M/9	21-4025	100
10-way	20.501M/10	21-4026	100
12-way	20.501M/12	21-4027	500

Type	Order code	1+
2 Way 16A 5mm Pitch	21-4018	0.12
3 Way 16A 5mm Pitch	21-4019	0.17
4 Way 16A 5mm Pitch	21-4020	0.24
5 Way 16A 5mm Pitch	21-4021	0.29
6 Way 16A 5mm Pitch	21-4022	0.37
7 Way 16A 5mm Pitch	21-4023	0.42
8 Way 16A 5mm Pitch	21-4024	0.49
9 Way 16A 5mm Pitch	21-4025	0.55
10 Way 16A 5mm Pitch	21-4026	0.61
12 Way 16A 5mm Pitch	21-4027	0.73



High Power Interlocking 28A rising clamp terminal block

A miniature rising clamp terminal block available in 2 and 3-way versions in both 5mm and 5.08mm pitch.



- 5mm and 5.08mm pitch
- 28A rating
- Moulded in green Polyamide 6,6 UL94V-0
- UL, CE and VDE approved

Technical specification

Current rating	28A
Maximum voltage	380V
Insulation resistance	>40MΩ
Wire acceptance	4.0mm ²
Moulding	Green Polyamide 6,6 (rated UL94V-0)
PCB Hole Diameter	1.3mm
Dimensions	-20° to +120°
Approvals	UL, CE, VDE
Camden part nos.	5mm pitch 2-way CTB0700/2 3-way CTB0700/3 5.08mm pitch 2-way CTB0708/2 3-way CTB0708/3

Type	Pitch	Order code	1+	100+	500+	1000+
2-way	5mm	21-1620	0.28	0.2244	0.204	0.1836
3-way	5mm	21-1622	0.42	0.3366	0.306	0.2754
2-way	5.08mm	21-1624	0.28	0.2244	0.204	0.1836
3-way	5.08mm	21-1626	0.42	0.3366	0.306	0.2754



PCB Terminal block large cable entry 5mm

These 5mm pitch terminal blocks have 2 x 2.5mm² cable entry points for interfacing larger cables. These connectors also feature a double interlock mechanism for increased strength.



- Professional rising clamp terminals
- Choice of 2-way or 3-way
- Moulded in green UL 94V-0 flame retardant PA66
- Cable entry - 2 x 2.5mm² (Stranded), 2 x 4mm² (Solid)
- PCB hole size Ø1.5mm
- UL, cUL and CE approved

Technical specification

Rating	16A 250V AC
Dielectric strength	2kV/60sec
Insulation resistance	≥5MΩ
Operating temperature	-20°C to +125°C
Short period	+160°C
Camden part no.	Type Length Order code
CTB09VG/2	2-way 10mm 21-1769
CTB09VG/3	3-way 15mm 21-1768

Type	Order code	1+	100+	500+	1000+
Terminal block 2-way	21-1769	0.59	0.4794	0.4355	0.3998
Terminal block 3-way	21-1770	0.90	0.7191	0.6538	0.5987



Right angled PCB terminal block large cable entry 5mm

These 5mm pitch 90° terminal blocks have 2 x 2.5mm² cable entry points for interfacing larger cables. These connectors also feature a double interlock mechanism for increased strength.



- Professional rising clamp terminals
- Choice of 2-way or 3-way
- Moulded in green **UL 94V-0** flame retardant PA66
- Cable entry - 2 x 2.5mm² (Stranded), 2 x 4mm² (Solid)
- PCB hole size ø1.5mm
- **UL, cUL** and **CE** approved

Technical specification

Rating	16A 250V AC		
Dielectric strength	2kV/60sec		
Insulation resistance	≥5MΩ		
Operating temperature	-20°C to +125°C		
Short period	+160°C		
Camden part no.	Type	Length	Order code
CTB09HG/2	2-way	10mm	21-1771
CTB09HG/3	3-way	15mm	21-1772

Type	Order code	1+	100+	500+	1000+
Terminal block 2-way	21-1771	0.82	0.6528	0.5926	0.5437
Terminal block 3-way	21-1772	1.22	0.9792	0.8894	0.816

Cables & connectors

Connectors – terminal blocks



24A 5mm Pitch rising clamp terminal block

These rising clamp blocks are available in the conventional vertical mounting style. These terminals are particularly suited in situations where the wire termination needs to be more secure and have greater resistance to vibration. It also improves the protection of stranded wires and ensures that all of the strands are clamped securely. The blocks are extremely suitable for industrial controls and information technology applications.



Please note: These terminal blocks are supplied in the manufacturers pack sizes as stipulated in the technical specification. Samples of the range are available on request.

- Pitch: 5mm
- Rated voltage: UL-300V; IEC-250V
- Rated current: UL-24A; IEC-24A
- Wire range: 4.0mm²
- Solid wire size: 24-12AWG
- Stranded wire range: 24-12AWG
- Rated surge voltage: 1.6/ 2/ 4kV
- Torque: 0.5Nm
- Screw: M2.5
- Wire strip length: 6-7mm
- Supplied in the manufacturers pack sizes
- Available in **2, 3, 4, 5, 6** and **7-way** options

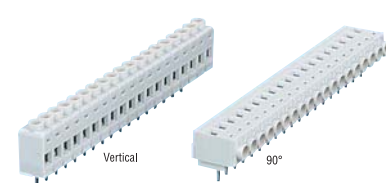
Technical specification

Type	Mfrs Part	Order code	Pack size
2-way	20.700M/2	21-4035	100
3-way	20.700M/3	21-4036	100
4-way	20.700M/4	21-4037	100
5-way	20.700M/5	21-4038	100
6-way	20.700M/6	21-4039	100
7-way	20.700M/7	21-4040	100

Type	Order code	1+
2 Way 24A 5mm Pitch Clamp	21-4035	0.31
3 Way 24A 5mm Pitch	21-4036	0.45
4 Way 24A 5mm Pitch	21-4037	0.64
5 Way 24A 5mm Pitch	21-4038	0.77
6 Way 24A 5mm Pitch	21-4039	0.93
7 Way 24A 5mm Pitch	21-4040	1.09



16A Professional rising clamp terminal blocks



- Professional quality rising clamp terminal blocks.
- Supplied as a 36-way block which can be easily cut to the required length with a sharp knife
 - Available in vertical or right angle (90°) mounting styles
 - Standard **5mm pitch**
 - Camden part no. **CTB7000/CTB7050**

Technical specification

Pitch	5mm
Current rating	16A
Maximum voltage	380V
Dielectric strength	>5kV

Type	Order code	1+	10+	50+	100+
36-way Vertical	21-0260	4.03	3.36	3.16	2.70
36-way 90°∞	21-1630	4.39	3.93	3.72	3.42



16A 45° Interlocking terminal blocks

High quality 45° PCB terminal blocks offering wide versatility in a low profile package.

- 16A rating
- Interlocking
- **UL** approved
- **5mm pitch**
- **Metway 645tds** series



Technical specification

Current rating	16A
Conductor size	1.5mm ²
Moulding material	Grey polycarbonate (UL94V-0)
Wire protector material	nickel plated bronze
Insert/pin material	tinned brass
Height	12.5mm
Width	12.5mm
Operating temperature	+120°C max

Type	Order code	1+	100+	500+	1000+
2-way	21-0130	0.28	0.2142	0.1989	0.1826
3-way	21-0132	0.41	0.3213	0.2948	0.2683
4-way	21-0134	0.54	0.4284	0.3968	0.3641
6-way	21-0136	0.81	0.6426	0.5896	0.5355



17.5A 45° Interlocking terminal blocks

Professional quality 45° 5mm pitch PCB terminal blocks in a very low profile package with professional rising clamp terminals.

- **5mm pitch**
- 17.5A rating
- **UL, CE** and **VDE** approved



Technical specification

Current rating	17.5A 250V AC
Insulation resistance	5MΩ
Moulding	UL94V-0 grey flame retardant PA66
Pin/terminal	5 micron tinned, nickel plated brass
Rising clamp	zinc plated steel
Recommended PCB hole size	1.3mm
Conductor acceptance	4mm ²
Temperature range	-20° to +125°C

Manfrs. part Nos.	2 way	CTB3000/2	4 way	CTB3000/4
	3 way	CTB3000/3	6 way	CTB3000/6

Type	Length (mm)	Order code	1+	100+	500+	1000+
2-way	10	21-2630	0.22	0.1836	0.1632	0.1479
3-way	15	21-2632	0.34	0.2754	0.2448	0.2244
4-way	20	21-2634	0.46	0.3774	0.3366	0.306
6-way	30	21-2636	0.68	0.5508	0.4998	0.459

7.5/7.62mm PCB



7.5mm pitch Interlocking terminal blocks 20A

Standard rising clamp terminal blocks in two and three way versions which interlock to provide any number of connections.

- **7.5mm pitch**
- 20A rating
- Moulded in green flame retardant **UL94V-0** Polyamide 6,6
- **UL** and **CE** approved
- **Manufacturers part numbers:** 2-way **CTB0110/2**, 3-way **CTB0110/3**



Technical specification

Rating	20A/250V
Insulation resistance	>40MΩ
Wire size	2.5mm ²
Height above PCB	13.8mm
Width	9.8mm
Length	2-way 15.0mm 3-way 22.5mm

Type	Order code	1+	100+	500+	1000+
2-way 7.5mm	21-1730	0.30	0.2346	0.2142	0.1989
3-way 7.5mm	21-1732	0.44	0.357	0.3264	0.2958



7.62mm pitch Interlocking terminal blocks 20A

Standard rising clamp terminal blocks in two and three way versions which interlock to provide any number of connections.

- **7.62mm pitch**
- 20A rating
- Moulded in green flame retardant **UL94V-0** Polyamide 6,6
- **UL** and **CE** approved
- **Manufacturers part numbers:** 2-way **CTB0118/2** and 3-way **CTB0118/3**



Technical specification

Rating	20A/250V
Insulation resistance	740MΩ
Wire size	2.5mm ²
Height above PB	13.8mm
Width	9.8mm
Length	2-way 15.24mm 3-way 22.86mm

Type	Order code	1+	100+	500+	1000+
2-way 7.62mm	21-1740	0.30	0.2346	0.2142	0.1989
3-way 7.62mm	21-1742	0.44	0.357	0.3264	0.2958



20A 7.62mm Terminal blocks

These quality terminal blocks are suitable for all types of application. The terminals are housed in moulded green polyamide PA66 and approved to UL94V-0.

- Supplied with rising clamps
- Available in 2 or 3-way options
- Pitch 7.62mm
- Slotted screws
- Rated current 20A
- Moulded Housing in green flame retardant PA66
- Screws zinc plated steel
- Pin header tin plated brass
- Wire guard nickel plated brass
- **UL94V-0** and **CSA** approved



Technical specification

Rated voltage	250-450V
Rated current	20A
Pitch	7.62mm
Screws	M3 slotted, zinc plated steel
Rated current at 250-450V	20A
Temperature rating	-40°C to +105°C
Housing	Moulded in green flame retardant PA66 / UL94V-0
Wire guard	Nickel plated brass
Pin header	Tin plated brass
Strip length	7mm
Wire range	0.5-2.5mm ²

2-way / DG129-7.62-2p	Order code 21-3019
3-way / DG129-7.62-3p	Order code 21-3020

Type	Order code	1+	100+	500+	1000+
2-way Terminal block	21-3019	0.27	0.1836	0.1561	0.1326
3-way Terminal block	21-3020	0.42	0.2846	0.2417	0.1989

New products
www.rapidonline.com



Lead free solder



18A 7.5mm Terminal blocks

These quality terminal blocks are suitable for all types of application. The terminals are housed in moulded green polyamide PA66 and approved to UL94V-0.

- Supplied with rising clamps
- Available in 2 or 3-way options
- Pitch 7.5mm
- Slotted screws
- Rated current 18A
- Moulded Housing in green flame retardant PA66
- Screws zinc plated steel
- Pin header tin plated brass
- Wire guard nickel plated brass
- **UL94V-0** and **CSA** approved



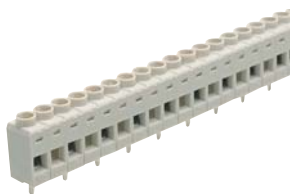
Technical specification	
Rated voltage	250V
Rated current	18A
Pitch	7.5mm
Screws	M2.5 slotted, zinc plated steel
Rated current at 250V	18A
Temperature rating	-40°C to +105°C
Housing	Moulded in green flame retardant PA66 / UL94V-0
Wire guard	Nickel plated brass
Pin header	Tin plated brass
Strip length	7mm
Wire range	2.5mm ²
UL94V-0 and CSA approved	

2-way / DG128-7.5-2p	Order code 21-3017				
3-way / DG128-7.5-3p	Order code 21-3018				
Type	Order code	1+	100+	500+	1000+
2-way Terminal block	21-3017	0.21	0.153	0.1306	0.1071
3-way Terminal block	21-3018	0.35	0.2417	0.205	0.1693

10mm PCB



17.5A 10mm Pitch professional terminal block



A professional 18-pole 10mm pitch connector which can easily be cut to the required length.

- **10mm pitch**
- **17.5A** rating
- **Rising clamp**
- **Moulded in grey UL94V-0 Lexan**

Technical specification					
Current rating	17.5A				
Maximum voltage	380V				
Dielectric strength	>5kV				
Insulation resistance	>40MΩ				
Moulding	Grey flame retardant lexan (rated UL94V-0)				
Recommended PCB hole	1.3mm				
Conductor acceptance	4.0mm ²				
Pin/terminal	5 micron tinned nickel plated brass				
Rising clamp	Tinned nickel plated steel				
Temperature range	-20°C to +110°C				
Mfrs. part no.	CTB8000				
Type	Order code	1+	10+	50+	100+
18-way Vertical	21-0795	3.46	2.75	2.50	2.30

High current PCB



57A Terminal blocks



A range of high quality terminal blocks suitable for all applications.

- PCB fitting
- 10.16mm pitch
- Interlocking 2 and 3-pole terminals
- 10mm² cable entry
- Professional rising clamp terminals
- Captive screws
- Guided pin alignment
- Moulded in grey UL94-V0 flame retardant PA66
- Available in **2, 3, 4, 6, 8, 10** and **12-way** options

Technical specification	
Rating	57A/750V, UL=40A, CUL=40A, IMQ=57A, Vde=57A
Dielectric strength	±2W/60sec
Insulation resistance	±5MΩ
Working temperature	-20°C to +110°C
Short period	+160°C
Moulding	UL94-V0 flame retardant PA66
Pin/terminal	5µ tinned, nickel plated brass
Rising clamp	7µ zinc plated steel
Screw/torque	M4 steel, 7µ zinc colour passivated and tropicalised/0.4Nm
PCB hole size	1.5mm diameter

Type	Order code	1+	25+	100+
2-way 57A 10.16mm	21-0200	1.28	1.07	0.918
3-way 57A 10.16mm	21-0202	1.89	1.63	1.38
4-way 57A 10.16mm	21-0204	2.60	2.14	1.84
6-way 57A 10.16mm	21-0206	3.83	3.32	2.75
8-way 57A 10.16mm	21-0208	5.00	4.23	3.67
10-way 57A 10.16mm	21-0210	6.02	5.00	4.59



9.52mm pitch 32A 750V Rising clamp power terminal

A range of professional rising clamp terminal blocks with a 9.52 pitch.

- 2 and 3-pole double interlocking mechanism for increased strength
- 9.52mm pitch
- Moulded in green **UL94-V0** flame retardant PA68
- 4mm² cable entry (12AWG)
- **VDE, IMQ** and **UL** approved
- Guided pin alignment
- Captive screws



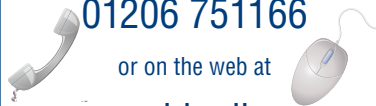
Technical specification				
Poles	Type	Length	Camden part	Order code
2	Rising power clamp terminal	19.04mm	CTB04VZ/2	21-0234
3	Rising power clamp terminal	28.56mm	CTB04VZ/3	21-0236
4	Rising power clamp terminal	38.08mm	CTB04VZ/4	21-0238
6	Rising power clamp terminal	57.12mm	CTB04VZ/6	21-0240
8	Rising power clamp terminal	76.16mm	CTB04VZ/8	21-0242
10	Rising power clamp terminal	95.20mm	CTB04VZ/10	21-0244
12	Rising power clamp terminal	114.24mm	CTB04VZ/12	21-0246

Dielectric strength:		±3kV/60 sec
Insulation resistance:		10M ²
Working temperature:		-20°C to +110°C
Material:		UL94 V-0 flame retardant PA68
Pin/terminal:		5µ tinned, nickel plated brass
Rising clamp:		Zinc plated steel
Screw type:		M3 steel, 6µ zinc and colour passivated and tropicalized
Screw max. torque:		0.5Nm
PCB hole size:		ø1.1mm (recommended)

Type	Order code	1+	25+	50+	100+
2-pole Length 19.04mm	21-0234	0.60	0.4794	0.408	0.3774
3-pole Length 28.56mm	21-0236	0.91	0.7242	0.6018	0.561
4-pole Length 38.08mm	21-0238	1.20	0.969	0.8058	0.7446
6-pole Length 57.16mm	21-0240	1.81	1.45	1.21	1.11
8-pole Length 76.46mm	21-0242	2.40	1.92	1.60	1.48
12-pole Length 114.24mm	21-0246	2.21			

Call & Collect

Ring your order through on **01206 751166**



or on the web at

www.rapidonline.com
then collect from our Trade Counter (open 6 days a week)



6.35mm pitch 32A 450V Rising clamp power terminal

A range of professional rising clamp terminal blocks with a 6.35 pitch.

- 2 and 3-pole double interlocking mechanism for increased strength
- 6.35mm pitch
- Moulded in green flame retardant PA68
- 4mm² cable entry (12AWG)
- **VDE, IMQ** and **UL** approved
- Guided pin alignment
- Captive screws



Technical specification				
Poles	Type	Length	Camden part no.	Order code
2	Rising power clamp terminal	12.7mm	CTB04VZ/2	21-0220
3	Rising power clamp terminal	19.05mm	CTB04VZ/3	21-0222
4	Rising power clamp terminal	25.4mm	CTB04VZ/4	21-0224
6	Rising power clamp terminal	38.1mm	CTB04VZ/6	21-0226
8	Rising power clamp terminal	50.8mm	CTB04VZ/8	21-0228
10	Rising power clamp terminal	63.5mm	CTB04VZ/10	21-0230
12	Rising power clamp terminal	78.2mm	CTB04VZ/12	21-0232

Dielectric strength:		±2.5kV/60 sec
Insulation resistance:		10M ²
Working temperature:		-20°C to +110°C
Material:		UL94 V-0 flame retardant PA68
Pin/terminal:		5µ tinned, nickel plated brass
Rising clamp:		Zinc plated brass
Screw type:		M3 steel, 6µ zinc and colour passivated and tropicalized
Screw max. torque:		0.5Nm
PCB hole size:		ø1.1mm (recommended)

Type	Order code	1+	25+	50+	100+
2-pole Length 12.7mm	21-0220	0.60	0.4488	0.3876	0.3366
3-pole Length 19.05mm	21-0222	0.91	0.663	0.5814	0.4998
4-pole Length 25.4mm	21-0224	1.20	0.9078	0.7752	0.6528
6-pole Length 38.1mm	21-0226	1.77	1.32	1.16	0.9996
10-pole Length 63.5mm	21-0230	2.95	2.23	1.93	1.62
12-pole Length 78.2mm	21-0232	3.56	2.64	2.33	1.93

Test equipment section

FLUKE



Screwless PCB

HellermannTyton



Helacon wire connectors

Helacon Plus is a sophisticated push-in wire connector for all professional cable connections in electrical housing applications. The newly developed double spring allows easy processing and will support installers especially in tricky situations like overhead work. This ensures proper fixing that can optically be checked through the transparent housings. Different colour codes provide a comfortable identification of the different connectors. A separate voltage test entry on the front guarantees safety during application, installation and maintenance.



The connectors may be used within a typical range of housing voltages up to 450 volts. Numerous variants offering a huge variety of input poles allow high flexibility in application depending on the number of conductors and available space. Cross-sections from 0.5 up to 1.5 and 2.5 mm² can conveniently be processed - connectors for many applications are provided. Cable distribution and branch connections vary from country to country due to the different types of wires, diameters, colours, junction boxes and mounting systems in use. No matter how distinct the individual requirements are the Helacon connector series offers the best solution for every task.

- Transparent housing allows quick and easy checking of conductor fitting
- Separate voltage test entry on the front guarantees safety during application
- Fast, easy and reliable connections every time
- Coloured connectors make for easy identification of pole options
- Available in **2, 3, 4 and 5-pole options**
- Available **in singles or in boxes** (see panel below for quantities)

Technical specification	
Suitable for multi wire core	Yes
Suitable for solid core	Yes
Wire Range (VDE)	0.5 to 2.5mm ² solid/stranded (max 7 cores)
Wire Range (cULus)	AWG 12 to 22 solid/stranded
Flammability	UL94 V2
Material	Polycarbonate (PC)
Material Shortcut	PC
Operating Temperature	-30°C to +105°C
Dimensions	19.00(D) x 10.45(H) x 19(L) x 11.75(W) mm
Specification	VDE, NEMKO, SEMKO, FIMKO, DEMKO, KEMA-KEUR, CE, cULus, Germanischer Lloyd, ENEC

Type	Order code	1+	10+
2-pole, yellow, box of 100	21-0961	8.06	7.25
3-pole, orange, box of 100	21-0974	9.08	8.15
4-pole, clear, box of 75	21-0975	9.08	8.15
5-pole, blue, box of 50	21-0976	7.04	6.33

Type	Order code	1+	10+	25+
2-pole yellow	21-0965	0.14	0.1142	0.0857
3-pole orange	21-0966	0.16	0.1306	0.0979
4-pole clear	21-0967	0.21	0.1714	0.1285
5-pole blue	21-0968	0.26	0.204	0.153

Enclosures section

GEWISS Enclosures



HellermannTyton

Hellmann variobox kit - 100 pieces

HelaCon Plus is a sophisticated push-in wire connector for professional cable connections in electrical housing applications. The newly developed double spring allows easy processing and will support installers especially in tricky situations like overhead work. This ensures proper fixing that can optically be checked through the transparent housings. Different colour codes provide a comfortable identification of the different connectors. A separate voltage test entry on the front guarantees safety during application, installation and maintenance.

- Fast, easy and reliable connections every time
- Lunchbox style case
- Transparent housing allows quick and easy checking of conductor fitting
- Separate test entry on front allows use of voltage meter
- Connector depth 19mm
- Supplied in **box of 100 assorted pieces**



Technical specification	
Suitable for multi wire core	Yes
Suitable for solid core	Yes
Wire Range (VDE)	0.5 to 2.5mm ² solid/stranded (max 7 cores)
Wire Range (cULus)	AWG 12 to 22 solid/stranded
Flammability	UL94 V2
Material	Polycarbonate (PC)
Material Shortcut	PC
Operating Temperature	-30°C to +105°C
Dimensions	19.00(D) x 10.45(H) x 19(L) x 11.75(W) mm
Specification	VDE, NEMKO, SEMKO, FIMKO, DEMKO, KEMA-KEUR, CE, cULus, Germanischer Lloyd, ENEC

Type	Colour	No. of Conductors	(W)	(H)	(D)	Box quantity
148-90000 HECP-2	Transparent (CL), Yellow (YE)	2	11.75	10.45	19	100
148-90001 HECP-3	Transparent (CL), Orange (OG)	3	15.9	10.45	19	100
148-90002 HECP-4	Transparent (CL)	4	20.05	10.45	19	75
148-90003 HECP-5	Transparent (CL), Blue (BU)	5	24.2	10.45	19	50
148-90004 HECP-6	Transparent (CL), Violet (VT)	6	28.35	10.45	19	50
148-90005 HECP-8	Transparent (CL), Grey (GY)	8	36.65	10.45	19	40

Kit contents		
Manu. Part No.	Number of Ways	Quantity
HECP-2	2	15
HECP-3	3	40
HECP-4	4	8
HECP-5	5	25
HECP-6	6	6
HECP-8	8	6

Type	Order code	1+
Helacon kit	21-0969	20.30

HellermannTyton



Helacon Lux push-in wire connectors

HelaCon Lux is best suitable to connect solid and flexible wire. It combines the push-in connector technology for solid conductors that is well known from HelaCon with a lock/unlock spring mechanism to connect fine-stranded conductors.



A typical application is lighting installation, where the solid conductor from concealed cabling has to be connected to a flexible conductor for lightings. The 2/1 variant allows the looping through of the supply lines for additional devices especially in overhead work and when wires are difficult to access.

The conductor on the output/lighting side can easily be inserted by pressing the locking mechanism and this can be released in the same way at any time. The lighting side can carry any kind of conductor and makes these connectors useful to connect devices that carry flexible connecting cables like control devices e.g. for blinds, fans and other drives.

- Best suited to connect solid and flexible wire
- Fast, easy and reliable connection
- Tool-free application, results in easy, time-saving and safe connection of conductors
- Ideal for lighting installations and overhead work
- Available in 1/1 grey or 2/1 white
- Supplied in **boxes of 100**

Technical specification	
Stripping Length	11mm
Variant	Single conductor terminal
Wire Range (VDE)	0.5 (0.75) – 2.5 mm ²
Max. cable cross section	2.5 mm ²
Min. cable cross section (installation side)	0.5 mm ²
Min. cable cross section (luminaire side)	0.75 mm ²
Nominal cross section ETIM	2.5 mm ²
Flammability	UL94 V2
Halogenfree	Yes
Material Polyamide	6.6 (PA66)

Material Shortcut		PA66
Operating Temperature	-5°C to +100°C	
Weight	0.2 kg	
Dimensions (D x H x L x W)	20.8 x 15.8 x 20.8 x 8.1 mm	

Type	Order code	1+	10+
1/1 Grey box of 100	21-0970	12.75	12.14
2/1 White box of 100	21-0971	13.21	12.75

IMO



16A 45 Degree 5mm pitch terminal block

These 45 degree terminal blocks are typically used in applications where access to the wire entry and the screw is limited. They are able to carry any current from 0 to 16A. This product provides the most economical way of using a PCB terminal block. The blocks are extremely suitable for use in security, lighting and electronic industries.



Please note: These terminal blocks are supplied in the manufacturers pack sizes as stipulated in the technical specification. Samples of the range are available on request.

- Pitch: 5mm
- Rated voltage: UL-300V; IEC-250V
- Rated current: UL-16A; IEC-24A
- Wire size: 2.5mm²
- Wire range: 12-20AWG
- Insulation withstand voltage: 1500V min
- Insulation resistance: 1000MΩ at 500V
- Torque: 0.4Nm
- Temperature range: -40°C to 105°C
- Wire strip length: 6-7mm

- Supplied in the manufacturers pack sizes
- Available in **2, 3, 4, 5, 6, 8** and **9-way** options

Technical specification			
Type	Mfrs Part	Order code	Pack size
2-way	20.300M/2	21-4028	100
3-way	20.300M/3	21-4029	100
4-way	20.300M/4	21-4030	100
5-way	20.300M/5	21-4031	100
6-way	20.300M/6	21-4032	100
8-way	20.300M/8	21-4033	100
9-way	20.300M/9	21-4034	100

Type	Order code	1+
2 Way	21-4028	0.23
3 Way	21-4029	0.33
4 Way	21-4030	0.44
5 Way	21-4031	0.54
6 Way	21-4032	0.65
8 Way	21-4033	0.87
9 Way	21-4034	0.97



8A 45 Degree 5mm Pitch rising clamp terminal block

These rising clamp blocks are supplied in the 45 degree mounting style. They are typically used in applications where access to the wire entry and the screw is limited. These blocks use a rising cage technology for positive connection to the wire and are particularly suited in situations where the wire termination needs to be more secure and have greater resistance to vibration. It also improves the protection of stranded wires and ensures that all of the strands are clamped securely. The blocks are extremely suitable for industrial controls and information technology applications.



Please note: These terminal blocks are supplied in the manufacturers pack sizes as stipulated in the technical specification. Samples of the range are available on request.

- Pitch: 5mm
- Rated voltage: UL-300V; IEC-250V
- Rated current: UL-8A; IEC-17.5A
- Wire range: 1.5mm²
- Solid wire size: 26-14AWG
- Stranded wire range: 26-14AWG
- Rated surge voltage: 1.6/ 2/ 3kV
- Torque: 0.5Nm
- Screw: M2.5
- Wire strip length: 6-7mm
- Supplied in the manufacturers pack sizes
- Available in **2, 3, 4** and **6-way** options

Technical specification			
Type	Mfrs Part	Order code	Pack size
2-way	20.590M/2	21-4041	100
3-way	20.590M/3	21-4042	100
4-way	20.590M/4	21-4043	100
6-way	20.590M/6	21-4044	100

Type	Order code	1+
2 Way	21-4041	0.28
3 Way	21-4042	0.40
4 Way	21-4043	0.54
6 Way	21-4044	0.81



10A 5.08mm 45° Screwless terminal blocks

Rapid is pleased to offer you these screwless 2, 3, 4 and 5-way 5.08mm pitch 45° moulded types that are UL94V-0 approved. The body is made from green polyamide PA66 and approved to UL94V-0.

- Supplied with screwless clamps
- Rated current 10A
- Moulded Housing in green flame retardant PA66
- Pin header tin plated brass
- Wire guard stainless steel
- **UL94V-0** and **CSA** approved



Technical specification	
Rated voltage	320V
Rated current	10A
Pitch	5.08mm
Screws	Screwless
Rated current at 320V	10A
Temperature rating	-40°C to +105°C
Housing	Moulded in green flame retardant PA66 / UL94V-0
Wire guard	Stainless steel
Pin header	Tin plated brass
Strip length	10mm
Wire range	0.2-1.5mm ²

UL94V-0 and CSA approved	
2-way/DG128-5.08-2p	Order code 21-3021
3-way/DG128-5.08-3p	Order code 21-3022
4-way/DG128-5.08-4p	Order code 21-3023
5-way/DG128-5.08-5p	Order code 21-3024

Type	Order code	1+	100+	500+	1000+
2-way Terminal block	21-3021	0.23	0.1448	0.1234	0.1122
3-way Terminal block	21-3022	0.35	0.2244	0.1907	0.1632
4-way Terminal block	21-3023	0.46	0.306	0.2601	0.2244
5-way Terminal block	21-3024	0.57	0.3876	0.3295	0.2713



8A 3.5mm Pitch plug-in terminal blocks

A wide range of quality plug-in terminal blocks designed for use with PCB's. They are housed in moulded green polyamide PA66 and approved to UL94V-0.

- Pitch 3.5mm
- Rated current 8A
- Moulded Housing in green flame retardant PA66
- Pin header tin plated brass
- **UL94V-0** and **CSA** approved



Technical specification	
Rated voltage	250V
Rated current	8A
Pitch	3.5mm
Rated current at 250V	8A
Temperature rating	-40°C to +105°C
Housing	Moulded in green flame retardant PA66 / UL94V-0
Pin header	Tin plated brass

UL94V-0 and CSA approved

Type	Order code	1+	100+	500+	1000+
Side header					
2-way, 3.5mm	21-3027	0.11	0.0785	0.0673	0.0551
3-way, 3.5mm	21-3028	0.17	0.1183	0.10	0.0826
4-way, 3.5mm	21-3029	0.22	0.1571	0.1336	0.1102
6-way, 3.5mm	21-3030	0.34	0.2356	0.2009	0.1652
8-way, 3.5mm	21-3031	0.45	0.3152	0.2672	0.2203
10-way, 3.5mm	21-3032	0.55	0.3937	0.3346	0.2754
12-way, 3.5mm	21-3033	0.66	0.4723	0.4009	0.3305
2-way Plug-in free plug	21-3034	0.30	0.205	0.1744	0.1438
3-way Plug-in free plug	21-3035	0.44	0.308	0.2621	0.2162
4-way Plug-in free plug	21-3036	0.58	0.4111	0.3488	0.2876
6-way Plug-in free plug	21-3037	0.87	0.6161	0.5243	0.4315
8-way Plug-in free plug	21-3038	1.15	0.8221	0.6987	0.5753
10-way Plug-in free plug	21-3039	1.44	1.03	0.8731	0.7191
12-way Plug-in free plug	21-3040	1.73	1.23	1.05	0.8629

Type	Order code	1+	100+	500+	1000+
Top header					
2-way, 3.5mm	21-3041	0.11	0.0785	0.0673	0.0551
3-way, 3.5mm	21-3042	0.17	0.1183	0.10	0.0826
4-way, 3.5mm	21-3043	0.22	0.1571	0.1336	0.1102
6-way, 3.5mm	21-3044	0.36	0.2479	0.205	0.1744
8-way, 3.5mm	21-3045	0.45	0.3152	0.2672	0.2203
10-way, 3.5mm	21-3046	0.55	0.3937	0.3346	0.2754
12-way, 3.5mm	21-3047	0.66	0.4723	0.4009	0.3305



15A 5mm Pitch 45 degree screwless terminal block with slot

This range of terminal blocks are screwless. The wire is connected to the terminal by a spring clamp (cage clamp). This makes them convenient to use and offers a maintenance free, anti-vibration and a highly reliable connection method. The terminals are offered with a 5mm pitch and are suitable for stranded, solid or ferruled type of wire and therefore can be used in many applications in the industrial distribution and electrical equipment fields.



Please note: These terminal blocks are supplied in the manufacturers pack sizes as stipulated in the technical specification. Samples of the range are available on request.

- Pitch: 5mm
- Rated voltage: UL-300V; IEC-450V
- Rated current: UL-15A; IEC-24A
- Wire range: 2.5mm²
- Solid wire size: 28-12AWG
- Stranded wire range: 28-12AWG
- Rated surge voltage: 1.6/ 2.5/ 3kV
- Wire strip length: 5-6mm
- Supplied in the manufacturers pack sizes
- Available in **3, 4, 5, 6, 8** and **12-way** options

Technical specification			
Type	Mfrs Part	Order code	Pack size
3-way	20.3000M/3	21-4150	100
4-way	20.3000M/4	21-4151	100
5-way	20.3000M/5	21-4152	100
6-way	20.3000M/6	21-4153	100
8-way	20.3000M/8	21-4154	500
12-way	20.3000M/12	21-4155	100

Type	Order code	1+
3 Way 15A 5mm Pitch	21-4150	0.37
4 Way 15A 5mm Pitch	21-4151	0.49
5 Way 15A 5mm Pitch	21-4152	0.62
6 Way 15A 5mm Pitch	21-4153	0.74
8 Way 15A 5mm Pitch	21-4154	0.98
12 Way 15A 5mm Pitch	21-4155	1.46



15A 5mm Pitch 45 degree screwless terminal block with lever



This range of terminal blocks are screwless. The wire is connected to the terminal by a spring clamp (cage clamp) by means of a lever. This makes them convenient to use and offers a maintenance free, anti-vibration and a highly reliable connection method. The terminals are offered with a 5mm pitch and are suitable for stranded, solid or ferruled type of wire and therefore can be used in many applications in the industrial distribution and electrical equipment fields.

Please note: These terminal blocks are supplied in the manufacturers pack sizes as stipulated in the technical specification. Samples of the range are available on request.

- Pitch: 5mm
- Rated voltage: UL-300V; IEC-450V
- Rated current: UL-15A; IEC-24A
- Wire range: 2.5mm²
- Solid wire size: 28-12AWG
- Stranded wire range: 28-12AWG
- Rated surge voltage: 1.6/ 2.5/ 3kV
- Wire strip length: 5-6mm
- Supplied in the manufacturers pack sizes
- Available in **2, 3, 4, 6, 8** and **12-way** options

Technical specification			
Type	Mfrs Part	Order code	Pack size
2-way	20.3001M/2	21-4156	100
3-way	20.3001M/3	21-4157	100
4-way	20.3001M/4	21-4158	100
6-way	20.3001M/6	21-4159	100
8-way	20.3001M/8	21-4160	100
12-way	20.3001M/12	21-4161	100

Type	Order code	1+
2 Way 15A 5mm Pitch	21-4156	0.32
3 Way 15A 5mm Pitch	21-4157	0.49
4 Way 15A 5mm Pitch	21-4158	0.63
6 Way 15A 5mm Pitch	21-4159	0.94
8 Way 15A 5mm Pitch	21-4160	1.25
12 Way 15A 5mm Pitch	21-4161	1.88



Free delivery
on all orders over £30
(excl. VAT)
(UK mainland only)

New products
THOUSANDS of new products now available

IMO

10A 5mm Pitch screwless push fit terminal block



This range of terminal blocks are screwless. The terminals use a simple spring type clamp mechanism that can be operated by means of a pushbutton if using stranded wire. Ferruled or solid wires can be inserted directly without the assistance of the pushbutton. This makes them convenient to use and offers a maintenance free, anti-vibration and a highly reliable connection method. The terminals are offered with a 5mm pitch.

Please note: These terminal blocks are supplied in the manufacturers pack sizes as stipulated in the technical specification. Samples of the range are available on request.

- Pitch: 5mm
- Rated voltage: UL-300V; IEC-450V
- Rated current: UL-10A; IEC-24A
- Wire range: 2.5mm²
- Solid wire size: 20-14AWG
- Stranded wire range: 28-12AWG
- Rated surge voltage: 1.6/ 2.5/ 3kV
- Wire strip length: 6-7mm
- Supplied in the manufacturers pack sizes
- Available in **2, 3, 4** and **6-way** options

Technical specification			
Type	Mttrs Part	Order code	Pack size
2-way	20.4101M/2	21-4162	100
3-way	20.4101M/3	21-4163	500
4-way	20.4101M/4	21-4164	500
6-way	20.4101M/6	21-4165	500

Type	Order code	1+
2 Way 10A 5mm Pitch	21-4162	0.33
3 Way 10A 5mm Pitch	21-4163	0.48
4 Way 10A 5mm Pitch	21-4164	0.64
6 Way 10A 5mm Pitch	21-4165	0.94

CAMDENBOSS
ELECTRONICS & ENCLOSURES

End-stackable 45° screwless terminal blocks 12A

End-stackable terminal blocks with lever-operated cable clamps for speed of assembly which ensure good connections, with no danger of screws being inadequately tightened.



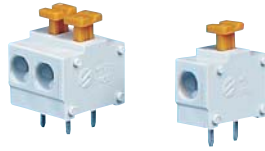
- **5.08mm pitch**
- 12A rating
- 45° wire entry
- Moulded in light grey Polyamide 6,6 to **UL94V-0**
- **UL, VDE** and **CE** approved

Technical specification			
Manufacturers part no.	Type	Order code	
CSTB/2	2-way	21-1510	
CSTB/3	3-way	21-1515	
CSTB/4	4-way	21-1520	
CSTB/5	5-way	21-1525	

Rating			
Rating	12A/250V AC		
Temperature rating	+120°C		
Insulation resistance	>5MΩ		
Wire size	1.5mm ²		
PCB hole size	1.3mm dia.		
Height above PCB	13mm		
Width	16.2mm		
Type	Order code	1+	100+
2-way 12A 45°	21-1510	0.27	0.1836
3-way 12A 45°	21-1515	0.37	0.2907
4-way 12A 45°	21-1520	0.49	0.3876
5-way 12A 45°	21-1525	0.61	0.4896

CAMDENBOSS
ELECTRONICS & ENCLOSURES

End stackable 12A screwless terminal blocks



5 and 5.08mm pitch screwless terminal blocks.

- Manufactured in self extinguishing PA66
- Blocks are supplied in various size strips
- Produced from 1-pole units which are easily separated to individual requirements
- **5mm** or **5.08mm pitch**
- 12A rating
- **UL, CUL, VDE** and **CE** approved

Technical specification					
Current rating	12A 250V AC				
Pin terminals	5 micron tinned nickel plated brass				
Pitch	5 or 5.08mm				
PCB hole diameter	1.1mm				
Conductor acceptance	1.5mm ²				
Max. temperature	+125°C				
Mttrs. part No.	5mm pitch	CSTBV1/xx	5.08mm pitch	CSTBV2/xx	
(xx = no. ways)					

Type	Order code	1+	10+	50+	100+
4-way 5.0mm Pitch	21-2625	0.85	0.7446	0.6018	0.4386
36-way 5.0mm Pitch	21-2620	4.48	3.62	3.26	3.01
36-way 5.08mm Pitch	21-2622	4.48	3.62	3.26	3.01
Pack 100 end Plates	21-2624	1.02	0.969	0.9384	0.918

CAMDENBOSS
ELECTRONICS & ENCLOSURES

Screwless terminal blocks



A range of screwless PCB terminal blocks that feature a push-button actuator for fast wire connection and release without the need for fixing screws.

- Suitable for applications that demand simple, fast assembly, or frequent servicing with disassembly and reconnection
- Compact terminals designed for saving space
- Also ideal for applications where there is reduced access to the PCB
- Vertical cable entry and release mechanism on top face
- Flame retardant material
- 0.5mm² - 1.5mm² cable entry (18AWG - 16AWG)
- Standard colour light grey
- Available with 2 or 3-poles
- Available with 5.08mm and 10.16mm pitches
- **UL, IMQ** approved

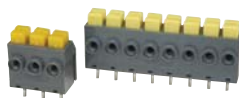
Technical specification					
Rating	16A/320V (5.08mm)				
	16A/630V (10.16mm)				
	UL=10A, CUL=10A, IMQ=16A,				
	2kV (5.08mm)				
	3kV (10.16mm)				
Working temperature:	-33°C to +120°C				
Material	UL94 V-0 flame retardant PA68				
Pin/terminal	Tin plated, nickelled phosphor bronze				
PCB hole size	ø1.1mm (recommended)				
Type	Order code	1+	25+	100+	
2-pole, 5.08 Pitch	21-2760	0.50	0.4488	0.3978	
3-pole, 5.08 Pitch	21-2762	0.75	0.663	0.6018	
2-pole, 10.16 Pitch	21-2764	0.56	0.4998	0.4488	

metway
CONNECT NETWORKS

Screwless terminal blocks PCB fitting

These screwless pushbutton blocks offer customers many benefits.

- Speed, on average, screwless connections can be made in half the time
- Cuts installation costs in half
- No need for twisting and turning screws



- Easier on the installers hands and arms
- Never have a problem with loose connections from loose screws again
- Provide a vibration proof connection
- Spring clamp conforms to the wire with constant tension, making it maintenance-free
- **5mm pitch**
- Side entry
- Available in **2, 3,** and **8-pole** options

Technical specification					
Current rating	6A				
Contact spring	Stainless steel				
Solder pins	Brass, electro tinned				
Conductor size	1mm to 1.5mm ²				
Working temperature	+120°C				
Mouldings	PBT, UL94 V0				

Type	Order code	1+	25+	50+	100+
2-pole	21-2626	0.28	0.2142	0.1928	0.1775
3-pole	21-2627	0.47	0.3754	0.3325	0.3111
8-pole	21-2628	0.84	0.6752	0.611	0.5569

Pluggable

IMO

10A 5mm Pitch pluggable terminal block

These pluggable terminal blocks provide a standard terminal block connection and a pin connection for mating with the pin strip on the PCB. They are especially popular for those applications requiring multiple wires to be connected and disconnected at the same time, such as when connecting to a control device. The rising clamp design insures a reliable termination the first and every time a wire is terminated in the plug. A PCB 24-way pin strip is available for these terminals (order code **21-4053**). The pin strips can be easily cut to suit the number of ways of the terminal block



Please note: These terminal blocks are supplied in the manufacturers pack sizes as stipulated in the technical specification. Samples of the range are available on request.

- Pitch: 5mm
- Rated voltage: UL-300V; IEC-250V
- Rated current: UL-10A; IEC-17.5A
- Wire size: 1.5mm²
- Wire range: 14-20AWG
- Insulation withstand voltage: 1500V min
- Insulation resistance: 1000M57 at 500V
- Torque: 0.4Nm
- Temperature range: -40°C to +105°C
- Wire strip length: 6-7mm
- Available: 24-way pin strip (order code **21-4053**)
- Supplied in the manufacturers pack sizes
- Available in **2, 3, 4, 5, 6, 7, 8,** and **12-way** options

Technical specification			
Type	Mttrs Part	Order code	Pack size
2-way	20.130M/2	21-4045	100
3-way	20.130M/3	21-4046	100
4-way	20.130M/4	21-4047	100
5-way	20.130M/5	21-4048	100
6-way	20.130M/6	21-4049	100
7-way	20.130M/7	21-4050	100
8-way	20.130M/8	21-4051	100
12-way	20.130M/12	21-4052	100
24-way	20.130M/PS	21-4053	100

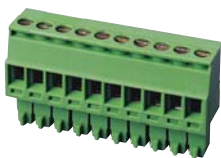
Type	Order code	1+
2 Way 10A 5mm Pitch	21-4045	0.25
3 Way 10A 5mm Pitch	21-4046	0.40
4 Way 10A 5mm Pitch	21-4047	0.52
5 Way 10A 5mm Pitch	21-4048	0.65
6 Way 10A 5mm Pitch	21-4049	0.78
7 Way 10A 5mm Pitch	21-4050	0.81
8 Way 10A 5mm Pitch	21-4051	0.86
12 Way 10A 5mm Pitch	21-4052	1.55
24 Way Pin Strip	21-4053	0.65

IMO



8A 3.5mm Pitch plug-in terminal blocks

A wide range of pluggable terminal blocks that can be used in a variety of PCB applications. The plugs have been designed with a steel yoke to create a reliable connection suitable for use in industrial controls, information technology and other applications requiring a highly reliable interconnection with the flexibility of simplified modifications and installations.



Please note: These terminal blocks are supplied in the manufacturers pack sizes as stipulated in the technical specification. Samples of the range are available on request.

- Pitch: 3.5mm
- Rated voltage: UL-300V; IEC-130V
- Rated current: UL-8A; IEC-8A
- Wire size: 1.5mm²
- Solid wire size: 28-16AWG
- Stranded wire range: 28-16AWG
- Rated surge voltage: 1.6/ 1.25/ 3kV
- Torque: 0.2Nm
- Screw: M2
- Wire strip length: 6-7mm
- Supplied in the manufacturers pack sizes
- Available in **2, 3, 4, 5, 6, 8, 10** and **12-way** options

Technical specification Type	Mfrs Part	Order code	Pack size
Free plug			
2-way	20.1550M/2	21-4054	100
3-way	20.1550M/3	21-4055	100
4-way	20.1550M/4	21-4056	100
5-way	20.1550M/5	21-4057	100
6-way	20.1550M/6	21-4058	100
8-way	20.1550M/8	21-4059	100
10-way	20.1550M/10	21-4060	100
12-way	20.1550M/12	21-4061	100
Top entry header			
2-way	20.155M/2	21-4062	100
3-way	20.155M/3	21-4063	100
4-way	20.155M/4	21-4064	100
5-way	20.155M/5	21-4065	100
6-way	20.155M/6	21-4066	100
8-way	20.155M/8	21-4067	100
10-way	20.155M/10	21-4068	100
12-way	20.155M/12	21-4069	100
Side entry header			
2-way	20.155MH/2	21-4070	100
3-way	20.155MH/3	21-4071	100
4-way	20.155MH/4	21-4072	100
5-way	20.155MH/5	21-4073	100
6-way	20.155MH/6	21-4074	100
8-way	20.155MH/8	21-4075	100
10-way	20.155MH/10	21-4076	100
12-way	20.155MH/12	21-4077	100

Type	Order code	1+
2 Way 3.5mm Free Plug	21-4054	0.33
3 Way 3.5mm Free Plug	21-4055	0.50
4 Way 3.5mm Free Plug	21-4056	0.66
5 Way 3.5mm Free Plug	21-4057	0.83
6 Way 3.5mm Free Plug	21-4058	0.99
8 Way 3.5mm Free Plug	21-4059	1.32
10 Way 3.5mm Free Plug	21-4060	1.65
12 Way 3.5mm Free Plug	21-4061	1.99
2 Way 3.5mm Top Entry Header	21-4062	0.11
3 Way 3.5mm Top Entry Header	21-4063	0.17
4 Way 3.5mm Top Entry Header	21-4064	0.22
5 Way 3.5mm Top Entry Header	21-4065	0.28
6 Way 3.5mm Top Entry Header	21-4066	0.33
8 Way 3.5mm Top Entry Header	21-4067	0.43
10 Way 3.5mm Top Entry Header	21-4068	0.55
12 Way 3.5mm Top Entry Header	21-4069	0.65
2 Way 3.5mm Side Entry Header	21-4070	0.11
3 Way 3.5mm Side Entry Header	21-4071	0.17
4 Way 3.5mm Pitch Side Header	21-4072	0.22
5 Way 3.5mm Pitch Side Header	21-4073	0.28
6 Way 3.5mm Pitch Side Header	21-4074	0.33
8 Way 3.5mm Pitch Side Header	21-4075	0.43
10 Way 3.5mm Pitch Side Header	21-4076	0.55
12 Way 3.5mm Pitch Side Header	21-4077	0.65

IMO



8A 3.81mm Pitch plug-in terminal blocks

A wide range of pluggable terminal blocks that can be used in a variety of PCB applications. The plugs have been designed with a steel yoke to create a reliable connection suitable for use in industrial controls, information technology and other applications requiring a highly reliable interconnection with the flexibility of simplified modifications and installations.



Please note: These terminal blocks are supplied in the manufacturers pack sizes as stipulated in the technical specification. Samples of the range are available on request.

- Pitch: 3.81 mm
- Rated voltage: UL-300V; IEC-130V
- Rated current: UL-8A; IEC-8A
- Wire size: 1.5mm²
- Solid wire size: 28-16AWG
- Stranded wire range: 28-16AWG
- Rated surge voltage: 1.6/ 1.25/ 3kV
- Torque: 0.2Nm
- Screw: M2
- Wire strip length: 6-7mm
- Supplied in the manufacturers pack sizes
- Available in **2, 3, 4, 5, 6, 8, 10** and **12-way** options

Technical specification Type	Mfrs Part	Order code	Pack size
Free plug			
2-way	21.1550M/2	21-4078	100
3-way	21.1550M/3	21-4079	100
4-way	21.1550M/4	21-4080	100
5-way	21.1550M/5	21-4081	100
6-way	21.1550M/6	21-4082	100
8-way	21.1550M/8	21-4083	100
10-way	21.1550M/10	21-4084	100
12-way	21.1550M/12	21-4085	100
Top entry header			
2-way	21.155M/2	21-4086	100
3-way	21.155M/3	21-4087	100
4-way	21.155M/4	21-4088	100
5-way	21.155M/5	21-4089	100
6-way	21.155M/6	21-4090	100
8-way	21.155M/8	21-4091	100
10-way	21.155M/10	21-4092	100
12-way	21.155M/12	21-4093	100
Side entry header			
2-way	21.155MH/2	21-4094	100
3-way	21.155MH/3	21-4095	100
4-way	21.155MH/4	21-4096	100
5-way	21.155MH/5	21-4097	100
6-way	21.155MH/6	21-4098	100
8-way	21.155MH/8	21-4099	100
10-way	21.155MH/10	21-4100	100
12-way	21.155MH/12	21-4101	100

Type	Order code	1+
2 Way 3.81mm Free Plug	21-4078	0.49
3 Way 3.81mm Free Plug	21-4079	0.75
4 Way 3.81mm Free Plug	21-4080	1.00
5 Way 3.81mm Free Plug	21-4081	1.26
6 Way 3.81mm Free Plug	21-4082	1.49
8 Way 3.81mm Free Plug	21-4083	2.00
10 Way 3.81mm Free Plug	21-4084	2.49
12 Way 3.81mm Free Plug	21-4085	3.00
2 Way 3.81mm Top Header	21-4086	0.15
3 Way 3.81mm Top Header	21-4087	0.24
4 Way 3.81mm Top Header	21-4088	0.31
5 Way 3.81mm Top Header	21-4089	0.38
6 Way 3.81mm Top Header	21-4090	0.45
8 Way 3.81mm Top Header	21-4091	0.59
10 Way 3.81mm Top Header	21-4092	0.75
12 Way 3.81mm Top Header	21-4093	0.89
2 Way 3.81mm Side Header	21-4094	0.15
2 Way 3.81mm Pitch Side Header	21-4095	0.24
4 Way 3.81mm Side Header	21-4096	0.31
5 Way 3.81mm Side Header	21-4097	0.38
6 Way 3.81mm Side Header	21-4098	0.45
8 Way 3.81mm Side Header	21-4099	0.59
10 Way 3.81mm Side Header	21-4100	0.75
12 Way 3.81mm Side Header	21-4101	0.89

IMO



15A 5mm Pitch plug-in terminal blocks

A wide range of pluggable terminal blocks that can be used in a variety of PCB applications. The plugs have been designed with a steel yoke to create a reliable connection suitable for use in industrial controls, information technology and other applications requiring a highly reliable interconnection with the flexibility of simplified modifications and installations.



Please note: These terminal blocks are supplied in the manufacturers pack sizes as stipulated in the technical specification. Samples of the range are available on request.

- Pitch: 5mm
- Rated voltage: UL-300V; IEC-250V
- Rated current: UL-15A; IEC-17.5A
- Wire range: 2.5mm²
- Solid wire size: 28-12AWG
- Stranded wire range: 30-12AWG
- Rated surge voltage: 1.6/ 2/ 4kV
- Torque: 0.5Nm
- Screw: M2.5
- Wire strip length: 7-8mm
- Supplied in the manufacturers pack sizes
- Available in **2, 3, 4, 5, 6, 8, 10** and **12-way** options

Technical specification Type	Mfrs Part	Order code	Pack size
Free plug			
2-way	20.950M/2	21-4102	100
3-way	20.950M/3	21-4103	100
4-way	20.950M/4	21-4104	100
5-way	20.950M/5	21-4105	100
6-way	20.950M/6	21-4106	100
8-way	20.950M/8	21-4107	100
10-way	20.950M/10	21-4108	100
12-way	20.950M/12	21-4109	100
Top entry header			
2-way	20.95M/2	21-4110	100
3-way	20.95M/3	21-4111	100
4-way	20.95M/4	21-4112	100
5-way	20.95M/5	21-4113	100
6-way	20.95M/6	21-4114	100
8-way	20.95M/8	21-4115	100
10-way	20.95M/10	21-4116	100
12-way	20.95M/12	21-4117	100
Side entry header			
2-way	20.95MH/2	21-4118	100
3-way	20.95MH/3	21-4119	100
4-way	20.95MH/4	21-4120	100
5-way	20.95MH/5	21-4121	100
6-way	20.95MH/6	21-4122	100
8-way	20.95MH/8	21-4123	100
10-way	20.95MH/10	21-4124	100
12-way	20.95MH/12	21-4125	100

Type	Order code	1+
2 Way 5mm Free Plug	21-4102	0.31
3 Way 5mm Free Plug	21-4103	0.46
4 Way 5mm Free Plug	21-4104	0.62
5 Way 5mm Free Plug	21-4105	0.75
6 Way 5mm Free Plug	21-4106	0.90
8 Way 5mm Free Plug	21-4107	1.21
10 Way 5mm Free Plug	21-4108	1.52
12 Way 5mm Free Plug	21-4109	1.82
2 Way 5mm Top Entry Header	21-4110	0.08
3 Way 5mm Top Entry Header	21-4111	0.12
4 Way 5mm Top Entry Header	21-4112	0.15
5 Way 5mm Top Entry Header	21-4113	0.19
6 Way 5mm Top Entry Header	21-4114	0.23
8 Way 5mm Top Entry Header	21-4115	0.30
10 Way 5mm Top Entry Header	21-4116	0.38
12 Way 5mm Top Entry Header	21-4117	0.45
2 Way 5mm Side Entry Header	21-4118	0.08
3 Way 5mm Side Entry Header	21-4119	0.12
4 Way 5mm Side Entry Header	21-4120	0.15
5 Way 5mm Side Entry Header	21-4121	0.19
6 Way 5mm Side Entry Header	21-4122	0.23
8 Way 5mm Side Entry Header	21-4123	0.30
10 Way 5mm Side Entry Header	21-4124	0.38
12 Way 5mm Side Entry Header	21-4125	0.45

Buying in bulk?

Get a quote and save money on your order

01206 751166 or sales@rapidonline.com

New products

www.rapidonline.com

IMO

15A 5.08mm Pitch plug-in terminal blocks

A wide range of pluggable terminal blocks that can be used in a variety of PCB applications. The plugs have been designed with a steel yoke to create a reliable connection suitable for use in industrial controls, information technology and other applications requiring a highly reliable interconnection with the flexibility of simplified modifications and installations.



Please note: These terminal blocks are supplied in the manufacturers pack sizes as stipulated in the technical specification. Samples of the range are available on request.

- Pitch: 5.08mm
- Rated voltage: UL-300V; IEC-250V
- Rated current: UL-15A; IEC-17.5A
- Wire range: 2.5mm²
- Solid wire size: 28-12AWG
- Stranded wire range: 30-12AWG
- Rated surge voltage: 1.6/ 2/ 4kV
- Torque: 0.5Nm
- Screw: M2.5
- Wire strip length: 7-8mm
- Supplied in the manufacturers pack sizes
- Available in **2, 3, 4, 5, 6, 8, 10** and **12-way** options

Technical specification	Type	Mfrs Part	Order code	Pack size
Free plug				
2-way	21.950M/2	21-4126	100	
3-way	21.950M/3	21-4127	100	
4-way	21.950M/4	21-4128	100	
5-way	21.950M/5	21-4129	100	
6-way	21.950M/6	21-4130	100	
8-way	21.950M/8	21-4131	100	
10-way	21.950M/10	21-4132	100	
12-way	21.950M/12	21-4133	100	
Top entry header				
2-way	21.95MV/2	21-4134	100	
3-way	21.95MV/3	21-4135	100	
4-way	21.95MV/4	21-4136	100	
5-way	21.95MV/5	21-4137	100	
6-way	21.95MV/6	21-4137	100	
8-way	21.95MV/8	21-4139	100	
10-way	21.95MV/10	21-4140	100	
12-way	21.95MV/12	21-4141	100	
Side entry header				
2-way	21.95MH/2	21-4142	100	
3-way	21.95MH/3	21-4143	100	
4-way	21.95MH/4	21-4144	100	
5-way	21.95MH/5	21-4145	100	
6-way	21.95MH/6	21-4146	100	
8-way	21.95MH/8	21-4147	100	
10-way	21.95MH/10	21-4148	100	
12-way	21.95MH/12	21-41	100	

Type	Order code	1+
2 Way 5.08mm Free Plug	21-4126	0.31
3 Way 5.08mm Free Plug	21-4127	0.46
4 Way 5.08mm Free Plug	21-4128	0.62
5 Way 5.08mm Free Plug	21-4129	0.75
6 Way 5.08mm Free Plug	21-4130	0.90
8 Way 5.08mm Free Plug	21-4131	1.21
10 Way 5.08mm Free Plug	21-4132	1.52
12 Way 5.08mm Free Plug	21-4133	1.82
2 Way 5.08mm Top Entry Header	21-4134	0.08
3 Way 5.08mm Top Entry Header	21-4135	0.12
4 Way 5.08mm Top Entry Header	21-4136	0.15
5 Way 5.08mm Top Entry Header	21-4137	0.19
6 Way 5.08mm Top Entry Header	21-4138	0.23
8 Way 5.08mm Top Entry Header	21-4139	0.30
10 Way 5.08mm Top Entry Header	21-4140	0.38
12 Way 5.08mm Top Entry Header	21-4141	0.45
2 Way 5.08mm Side Entry Header	21-4142	0.08
3 Way 5.08mm Side Entry Header	21-4143	0.12
4 Way 5.08mm Side Entry Header	21-4144	0.15
5 Way 5.08mm Side Entry Header	21-4145	0.19
6 Way 5.08mm Side Entry Header	21-4146	0.23
8 Way 5.08mm Side Entry Header	21-4147	0.30
10 Way 5.08mm Side Header	21-4148	0.38
12 Way 5.08mm Side Header	21-4149	0.45

NEW

Storage cabinets



CAMDENBOSS
ELECTRONICS & ENCLOSURES

3.5mm Plug-in terminal blocks

A range of plug-in terminal blocks with a rating of 130V 9A.

- Closed ended
- **3.5 pitch**
- Available in horizontal male, vertical male
- Available vertical female with professional rising clamps
- Moulded in green **UL94-V0** flame retardant **PA66**
- **UL**, and **CE** approved



Poles	Type	Description	Length	Camden part no.	Order code
2	Side entry header	Plug-in PCB male horiz closed	8.4mm	CTB93HD/2	21-1908
3	Side entry header	Plug-in PCB male horiz closed	11.9mm	CTB93HD/3	21-1909
4	Side entry header	Plug-in PCB male horiz closed	15.4mm	CTB93HD/4	21-1910
6	Side entry header	Plug-in PCB male horiz closed	22.4mm	CTB93HD/6	21-1911
8	Side entry header	Plug-in PCB male horiz closed	29.4mm	CTB93HD/8	21-1912
10	Side entry header	Plug-in PCB male horiz closed	36.4mm	CTB93HD/10	21-1927
12	Side entry header	Plug-in PCB male horiz closed	43.4mm	CTB93HD/12	21-1928
2	Free plug	Plug-in female conn	8.4mm	CTB92HD/2	21-1913
3	Free plug	Plug-in female conn	11.9mm	CTB92HD/3	21-1914
4	Free plug	Plug-in female conn	15.4mm	CTB92HD/4	21-1915
6	Free plug	Plug-in female conn	22.4mm	CTB92HD/6	21-1916
8	Free plug	Plug-in female conn	29.4mm	CTB92HD/8	21-1917
10	Free plug	Plug-in female conn	35mm	CTB92HD/10	21-1923
12	Free plug	Plug-in female conn	42mm	CTB92HD/12	21-1924
2	Top entry header	Plug-in PCB M vert closed	8.4mm	CTB93VD/2	21-1918
3	Top entry header	Plug-in PCB M vert closed	11.9mm	CTB93VD/3	21-1919
4	Top entry header	Plug-in PCB M vert closed	15.4mm	CTB93VD/4	21-1920
6	Top entry header	Plug-in PCB M vert closed	22.4mm	CTB93VD/6	21-1921
8	Top entry header	Plug-in PCB M vert closed	29.4mm	CTB93VD/8	21-1922
10	Top entry header	Plug-in PCB M vert closed	36.4mm	CTB93VD/10	21-1925
12	Top entry header	Plug-in PCB M vert closed	43.4mm	CTB93VD/12	21-1926
Rating		9A 130V			
Working temperature		-20°C to +125°C			
Moulding		UL94 V0 flame retardant PA66			
Terminals		Tinned phosphor bronze			
Recommended PCB hole		1.0mm			

Type	Order code	1+	100+	500+
Side entry header				
2-pole, 8.4mm	21-1908	0.15	0.1326	0.1122
3-pole, 11.9mm	21-1909	0.20	0.1836	0.1734
4-pole, 15.4mm	21-1910	0.37	0.2958	0.2652
5-pole, 17.5mm	21-1935	0.43	0.357	0.3264
6-pole, 22.4mm	21-1911	0.52	0.4182	0.3876
7-pole, 24.5mm	21-1934	0.60	0.4896	0.4488
8-pole, 29.4mm	21-1912	0.68	0.561	0.5202
9-pole, 31.5mm	21-1936	0.78	0.6324	0.5814
10-pole, 36.4mm	21-1927	0.87	0.7038	0.6426
11-pole, 38.5mm	21-1929	0.95	0.7752	0.7038
12-pole, 43.4	21-1928	1.04	0.8364	0.7752
14-pole, 49.0mm	21-1930	1.20	0.9894	0.8976
15-pole, 52.5mm	21-1933	1.30	1.06	0.969
Free plug				
2-pole, 8.4mm	21-1913	0.43	0.3468	0.3162
3-pole, 11.9mm	21-1914	0.64	0.5202	0.4794
4-pole, 15.4mm	21-1915	0.86	0.6936	0.6324
5-pole, 17.5mm	21-1937	1.06	0.867	0.7956
6-pole, 22.4mm	21-1916	1.29	1.04	0.9486
7-pole, 24.5mm	21-1938	1.49	1.21	1.11
8-pole, 29.4mm	21-1917	1.71	1.39	1.26
9-pole, 31.5mm	21-1939	1.91	1.56	1.43
10-pole, 35mm	21-1923	2.13	1.73	1.58
11-pole, 38.5mm	21-1940	2.34	1.91	1.74
12-pole, 42mm	21-1924	2.08	1.93	1.76
Top entry header				
2-pole, 8.4mm	21-1918	0.13	0.1122	0.102
3-pole, 11.9mm	21-1919	0.20	0.1683	0.153
4-pole, 15.4mm	21-1920	0.28	0.2244	0.204
5-pole, 18.9mm	21-1941	0.35	0.2805	0.255
6-pole, 22.4mm	21-1921	0.40	0.3366	0.2958
7-pole, 28.9mm	21-1942	0.48	0.3876	0.357
8-pole, 29.4mm	21-1922	0.55	0.4437	0.408
9-pole, 32.9mm	21-1943	0.61	0.4998	0.459
10-pole, 35mm	21-1925	0.68	0.561	0.51
11-pole, 39.9mm	21-1944	0.74	0.612	0.561
12-pole, 42mm	21-1926	0.82	0.663	0.612



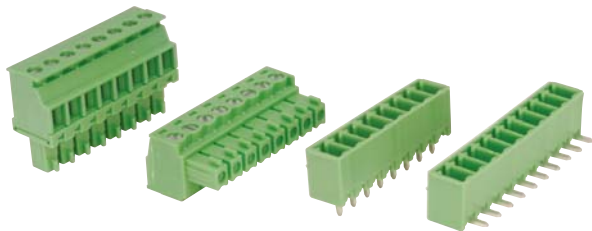
To save time

Fax any of your previous bulk orders for our quote to:

01206 751188



3.81mm 9A Plug-in terminal blocks



A range of two part plugs and headers with a 3.81mm pitch, PCB terminal blocks with screw terminals can accommodate cables up to 1mm² and have a rating of 9A at 130V AC.

- 3.81mm pitch
- 9A rating
- Rising clamp
- UL, CUL, CE approved

Technical specification
 Voltage rating 130V AC
 Current rating 9A
 Connector pitch 3.81mm
 Conductor size max. 1mm²
 Moulding material **UL94V-0** green PA66
 Metal parts M2 steel zinc colour passivated and topicalised
 Contact/wire protector nickel plated brass
 Pins nickel plated brass
 PCB hole size Dielectric strength 1250V AC/60 sec.
 Operating temperature -20°C to +125°C

Type	Order code	1+	25+	100+
Free plug				
2-way	CTB92HE/2 21-2700	0.42	0.3468	0.3162
3-way	CTB92HE/3 21-2702	0.63	0.5202	0.4794
4-way	CTB92HE/4 21-2704	0.85	0.6936	0.6324
5-way	CTB92HE/5 21-2705	1.05	0.867	0.7956
6-way	CTB92HE/6 21-2706	1.26	1.04	0.9486
7-way	CTB92HE/7 21-1945	1.48	1.21	1.11
8-way	CTB92HE/8 21-2708	1.68	1.38	1.26
9-way	CTB92HE/9 21-1946	1.91	1.56	1.43
10-way	CTB92HE/10 21-2710	2.10	1.72	1.58
11-way	CTB92HE/11 21-1947	2.34	1.91	1.74
12-way	CTB92HE/12 21-2712	2.52	2.07	1.90
Side entry header				
2-way	CTB93HE/2 21-2720	0.17	0.1428	0.1285
3-way	CTB93HE/3 21-2722	0.27	0.2142	0.1928
4-way	CTB93HE/4 21-2724	0.35	0.2856	0.2601
5-way	CTB93HE/5 21-2725	0.43	0.357	0.3213
6-way	CTB93HE/6 21-2726	0.52	0.4284	0.3876
7-way	CTB93HE/7 21-1948	0.60	0.4896	0.4488
8-way	CTB93HE/8 21-2728	0.63	0.5202	0.4794
9-way	CTB93HE/9 21-1949	0.78	0.6324	0.5814
10-way	CTB93HE/10 21-2730	0.87	0.7038	0.6324
11-way	CTB93HE/11 21-1950	0.95	0.7752	0.7038
12-way	CTB93HE/12 21-2732	1.01	0.8262	0.7344
Top entry header				
2-way	CTB93HV/2 21-2740	0.13	0.1122	0.102
3-way	CTB93VE/3 21-2742	0.20	0.1683	0.153
4-way	CTB93VE/4 21-2744	0.28	0.2244	0.204
5-way	CTB93VE/5 21-2745	0.34	0.2805	0.255
6-way	CTB93VE/6 21-2746	0.37	0.3162	0.2856
7-way	CTB93VE/7 21-1951	0.48	0.3978	0.357
8-way	CTB93VE/8 21-2748	0.55	0.4488	0.408
9-way	CTB93VE/9 21-1952	0.62	0.51	0.459
10-way	CTB93VE/10 21-2750	0.70	0.5712	0.51
11-way	CTB93VE/11 21-1953	0.75	0.612	0.561
12-way	CTB93VE/12 21-2752	0.82	0.663	0.612
Vertical female				
2-way	CTB92VE/2S 21-2770	0.54	0.459	0.4284
4-way	CTB92VE/4S 21-2772	1.07	0.918	0.8568
5-way	CTB92VE/5S 21-1954	1.53	1.26	1.15
7-way	CTB92VE/7S 21-1955	2.14	1.77	1.62
9-way	CTB92VE/9S 21-1956	2.75	2.28	2.08
10-way	CTB92VE/10S 21-2775	3.01	2.54	2.24
11-way	CTB92VE/11S 21-1957	3.41	2.77	2.54

PVC insulating tape



8A 3.81mm Plug-in terminal blocks



Vertical plug Free plug Top header Side header

A wide range of quality plug-in terminal blocks designed for use with PCB's. They are housed in moulded green polyamide PA66 and approved to UL94V-0.

- Supplied in the straight version
- Pitch 3.81mm
- Rated current 8A
- Moulded Housing in green flame retardant PA66
- Pin header tin plated brass
- **UL94V-0** and **CSA** approved
- **15EDGKA-3.81-xxp** series

Technical specification
 Rated voltage 250V
 Rated current 8A
 Pitch 3.81mm
 Strip length 7mm
 Rated current at 250V 8A
 Temperature rating -30°C to +120°C
 Housing Moulded in green flame retardant PA66 / UL94V-0
 Contacts Phosphor bronze
UL94V-0 and **CSA** approved

Type	Order code	1+	100+	500+	1000+
Free plug					
2-way 3.81mm	21-3090	0.29	0.2162	0.1887	0.1795
3-way 3.81mm	21-3091	0.42	0.3213	0.2866	0.2713
4-way 3.81mm	21-3092	0.53	0.4049	0.3601	0.3417
5-way 3.81mm	21-3093	0.66	0.511	0.4529	0.4264
6-way 3.81mm	21-3094	0.80	0.612	0.5457	0.5161
8-way 3.81mm	21-3095	1.06	0.8119	0.7201	0.6844
10-way 3.81mm	21-3096	1.34	1.01	0.9058	0.8527
12-way 3.81mm	21-3097	1.67	1.29	1.13	1.07
Vertical plug					
2-way 3.81mm	21-3048	0.09			
3-way 3.81mm	21-3049	0.15			
4-way 3.81mm	21-3050	0.84	0.5508	0.4682	0.3978
5-way 3.81mm	21-3051	0.98	0.6936	0.5896	0.4998
6-way 3.81mm	21-3052	0.40			
8-way 3.81mm	21-3053	1.67	1.09	0.9282	0.7956
10-way 3.81mm	21-3054	1.93	1.38	1.17	0.9945
12-way 3.81mm	21-3055	2.32	1.65	1.40	1.16
Side header					
2-way 3.81mm	21-3056	0.12	0.0826	0.0714	0.0581
3-way 3.81mm	21-3057	0.05			
4-way 3.81mm	21-3058	0.22	0.1571	0.1336	0.1102
5-way 3.81mm	21-3059	0.28	0.1969	0.1673	0.1377
6-way 3.81mm	21-3060	0.34	0.2356	0.2009	0.1652
8-way 3.81mm	21-3061	0.45	0.3152	0.2672	0.2203
10-way 3.81mm	21-3062	0.55	0.3937	0.3346	0.2754
12-way 3.81mm	21-3063	0.66	0.4723	0.4009	0.3305
Top headers					
2-way 3.81mm	21-3064	0.12	0.0826	0.0714	0.0581
3-way 3.81mm	21-3065	0.17	0.1183	0.10	0.0826
4-way 3.81mm	21-3066	0.22	0.1571	0.1336	0.1102
5-way 3.81mm	21-3067	0.30	0.2071	0.1765	0.1448
6-way 3.81mm	21-3068	0.36	0.2479	0.2111	0.1744
8-way 3.81mm	21-3069	0.45	0.3152	0.2672	0.2203
10-way 3.81mm	21-3070	0.58	0.4141	0.3519	0.2897
12-way 3.81mm	21-3071	0.66	0.4723	0.4009	0.3305



Order online

Activate your account for online ordering.
 For instructions go to:

www.rapidonline.com/activate



8A 3.81mm Plug-in top headers

This family of 15EDGVC printed circuit plug-in top headers can be used to mate with 15EDGRC pluggable plug-in free plugs. This range is supplied in the straight version.



A feature of the 15EDGVC top headers is the moulded-in polarization that insures proper mating of the plug. The headers are available in 2, 3, 4, 5, 6, 8, 10 and 12-way options a current rating of 7A at 250V. The terminals are housed in moulded green polyamide PA66 and approved to UL94V-0.

- Supplied in the straight version
- Available with either 2, 3, 4, 5, 6, 8, 10 and 12-way pins
- Pitch 3.81mm
- Rated current 7A
- Moulded Housing in green flame retardant PA66
- Pin header tin plated brass
- **UL94V-0** and **CSA** approved
- 15EDGVC-3.81-xxp series

Technical specification	
Rated voltage	250V
Rated current	7A
Pitch	3.81mm
Rated current at 250V	7A
Temperature rating	-40°C to +105°C
Housing	Moulded in green flame retardant PA66 / UL94V-0
Pin header	Tin plated brass

- UL94V-0** and **CSA** approved
- 2-way / 15EDGVC-3.81-2p **Order code 21-3064**
 - 3-way / 15EDGVC-3.81-3p **Order code 21-3065**
 - 4-way / 15EDGVC-3.81-4p **Order code 21-3066**
 - 5-way / 15EDGVC-3.81-5p **Order code 21-3067**
 - 6-way / 15EDGVC-3.81-6p **Order code 21-3068**
 - 8-way / 15EDGVC-3.81-8p **Order code 21-3069**
 - 10-way / 15EDGVC-3.81-10p **Order code 21-3070**
 - 12-way / 15EDGVC-3.81-12p **Order code 21-3071**

Type	Order code	1+	100+	500+	1000+
Top headers					
2-way 3.81mm	21-3064	0.12	0.0826	0.0714	0.0581
3-way 3.81mm	21-3065	0.17	0.1183	0.10	0.0826
4-way 3.81mm	21-3066	0.22	0.1571	0.1336	0.1102
5-way 3.81mm	21-3067	0.30	0.2071	0.1765	0.1448
6-way 3.81mm	21-3068	0.36	0.2479	0.2111	0.1744
8-way 3.81mm	21-3069	0.45	0.3152	0.2672	0.2203
10-way 3.81mm	21-3070	0.58	0.4141	0.3519	0.2897
12-way 3.81mm	21-3071	0.66	0.4723	0.4009	0.3305



16A Professional plug-in terminal blocks

5mm pitch terminal block that enables easy connection/disconnection in either horizontal or vertical position.

- **5mm pitch**
- 16A rating
- Plug-in
- Rising clamp
- Supplied in 36-way modules
- Can easily be cut to the required size
- Optional polarising clips may be fitted to guard against incorrect connection
- Polarising clips are supplied in pairs 1x black and 1x beige



Technical specification	
Current rating	16A
Maximum voltage	380V
Dielectric strength	>5kV
Insulation resistance	>40MΩ
Moulding	Grey Flame Retardant Lexan (UL94V-0)
Recommended PCB hole	1.3mm
Pin/Terminal	5 micron tinned nickel plated brass
Conductor Acceptance	4.0mm ²
Screw/torque	M2.5 steel/4Nm 7 micron zinc colour passivated ad tropicalised
Temperature Range	-20°C to +125°C
Mfrs. part No.	PCB male CTB7300/36M
	Female CTB7300/36F
	Polarising Clips CTB7300/C

Type	Order code	1+	10+	50+	100+
36-way Male PCB plug	21-1640	1.89	1.62	1.58	1.52
36-way Female t/block	21-1642	4.49	3.88	3.26	3.05
Polarising clips	21-1650	0.12	0.102	0.0918	0.0765

Page 872

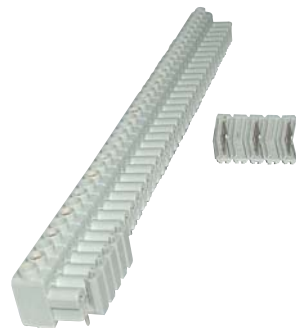
Stripboard cutter



PCB Terminal block 18-way 10mm

Unique 18-way terminal blocks that can easily be cut to the required number of ways and can be mounted either horizontally or vertically.

- Professional rising clamp terminals
- Choice of male PCB mounting or female connector
- Moulded in green **UL 94V-0** flame retardant Lexan
- Cable entry 4mm²
- PCB hole size ø1.3mm
- Anti solder wicking
- Captive screws
- Guided pin alignment
- **CE** approved



Technical specification	
Rating	14A 750V AC
Dielectric strength	2.5kV/60sec
Insulation resistance	≥5MΩ
Operating temperature	-20°C to +125°C
Short period	+160°C

Camden part no.	Type	Length	Order code
CTB8300/18F	Female connector	10.16mm	21-1775
CTB8300/18M	PCB mounting male	15.24mm	21-1776

Type	Order code	1+	10+	50+	100+
Female 18-way	21-1775	4.51	3.60	3.27	3.00
Male 18-way	21-1776	1.72	1.38	1.25	1.15



7.62mm pitch Interlocking terminal blocks 20A

Standard rising clamp terminal blocks in two and three way versions which interlock to provide any number of connections.

- **7.62mm pitch**
- 20A rating
- Moulded in green flame retardant **UL94V-0** Polyamide 6,6
- **UL** and **CE** approved
- **Manufacturers part numbers:** 2-way **CTB0118/2** and 3-way **CTB0118/3**

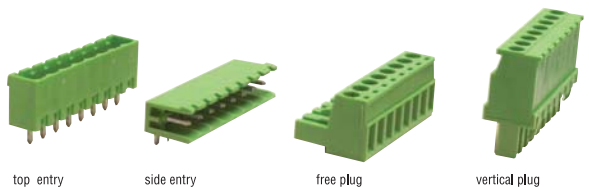


Technical specification	
Rating	20A/250V
Insulation resistance	740MΩ
Wire size	2.5mm ²
Height above PB	13.8mm
Width	9.8mm
Length	2-way 15.24mm 3-way 22.86mm

Type	Order code	1+	100+	500+	1000+
2-way 7.62mm	21-1740	0.30	0.2346	0.2142	0.1989
3-way 7.62mm	21-1742	0.44	0.357	0.3264	0.2958



5mm pitch 12A Plug-in terminal blocks



Two part plug and header 5mm pitch PCB terminal blocks with screw terminals that can accommodate cables up to 3.0mm² (12AWG) and have a rating of 12A 380V AC.

- **5mm pitch**
- 12A rating
- Headers are available either as vertical or horizontal mounting with either open or closed ends
- Free plugs are available as standard or vertical
- Fitted with rising clamps
- Connectors are **UL**, **CUL**, **VDE** and **CE** approved

Technical specification	
Operating voltage	380V AC
Current rating	12A
Connector pitch	5mm
Conductor size	3.0mm ²
Moulding material	Flame retardant (UL94V-0) polyamide 66
Metal parts	M3 steel zinc colour passivated and tropicalised
PCB hole size	1.4mm
Operating temperature range	-20°C to +125°C

Type	Order code	1+	25+	100+	250+	
Free plugs						
2-way	CTB9200/2A	21-2300	0.40	0.3366	0.2897	0.255
3-way	CTB9200/3A	21-2302	0.66	0.5406	0.4682	0.4202

4-way	CTB9200/4A	21-2304	0.84	0.663	0.5763	0.51
5-way	CTB9200/5A	21-2306	0.99	0.816	0.7436	0.663
6-way	CTB9200/6A	21-2308	1.25	1.07	0.869	0.7803
7-way	CTB9200/7A	21-1958	1.32	1.16	1.04	0.9486
8-way	CTB9200/8A	21-2310	1.52	1.24	1.12	1.01
9-way	CTB9200/9A	21-1959	1.68	1.50	1.35	1.22
10-way	CTB9200/10A	21-2312	1.97	1.68	1.50	1.33
11-way	CTB9200/11A	21-1960	2.06	1.84	1.65	1.50
12-way	CTB9200/12A	21-2314	2.34	2.00	1.82	1.64
14-way	CTB9200/14A	21-2315	2.85	2.27	2.07	1.90

Vertical free plugs

2-way	CTB92VG/2	21-2662	0.39	0.357	0.3162	0.2754
3-way	CTB92VG/3	21-2664	0.59	0.5304	0.4896	0.4386
4-way	CTB92VG/4	21-2666	0.80	0.7038	0.6324	0.561
5-way	CTB92VG/5	21-2668	0.98	0.8466	0.7854	0.714
6-way	CTB92VG/6	21-2670	1.29	1.06	0.9588	0.8466
7-way	CTB92VG/7	21-1961	1.52	1.24	1.14	1.05
8-way	CTB92VG/8	21-2672	1.75	1.38	1.28	1.17
9-way	CTB92VG/9S	21-1962	1.95	1.60	1.47	1.35
10-way	CTB92VG/10	21-2674	2.25	1.79	1.60	1.48
11-way	CTB92VG/11S	21-1963	2.39	1.96	1.80	1.65
12-way	CTB9600/12	21-2676	2.54	2.09	1.89	1.75

Side entry header - open

2-way	CTB9350/2A0	21-2320	0.14	0.102	0.0898	0.0796
3-way	CTB9350/3A0	21-2322	0.21	0.1632	0.1499	0.1377
4-way	CTB9350/4A0	21-2324	0.29	0.2244	0.1999	0.1836
5-way	CTB9350/5A0	21-2326	0.36	0.2754	0.2499	0.2295
6-way	CTB9350/6A0	21-2328	0.42	0.3264	0.3009	0.2754
7-way	CTB9350/7A0	21-1964	0.49	0.4284	0.3264	0.306
8-way	CTB9350/8A0	21-2330	0.56	0.4386	0.4029	0.3672
9-way	CTB9350/9A0	21-1965	0.63	0.5202	0.459	0.3876
10-way	CTB9350/10A0	21-2332	0.70	0.5508	0.4998	0.459
11-way	CTB9350/11A0	21-1966	0.77	0.6324	0.5508	0.4794
12-way	CTB9350/12A0	21-2334	0.85	0.663	0.6018	0.5508

Top entry header - open

2-way	CTB9300/2A0	21-2340	0.13	0.102	0.0765	0.0663
3-way	CTB9300/3A0	21-2342	0.12	0.102	0.0836	0.0745
4-way	CTB9300/4A0	21-2344	0.19	0.1632	0.1316	0.1153
5-way	CTB9300/5A0	21-2346	0.23	0.1938	0.1581	0.1469
6-way	CTB9300/6A0	21-2348	0.26	0.2142	0.1805	0.1642
7-way	CTB9300/A0	21-1967	0.32	0.2652	0.2142	0.1938
8-way	CTB9300/8A0	21-2350	0.37	0.2754	0.2295	0.2081
9-way	CTB9300/9A0	21-1968	0.41	0.3264	0.2856	0.255
10-way	CTB9300/10A0	21-2352	0.43	0.3366	0.305	0.2723
11-way	CTB9300/11A0	21-1969	0.46	0.3876	0.3366	0.306
12-way	CTB9300/12A0	21-2354	0.48	0.3978	0.3509	0.308

Side entry header - closed

2-way	CTB9350/2A	21-2360	0.14	0.1122	0.10	0.0918
3-way	CTB9350/3A	21-2362	0.21	0.1632	0.1499	0.1377
4-way	CTB9350/4A	21-2364	0.29	0.2244	0.1999	0.1836
5-way	CTB9350/5A	21-2366	0.36	0.2754	0.2499	0.2295
6-way	CTB9350/6A	21-2368	0.42	0.3264	0.3009	0.2754
7-way	CTB9350/7A	21-1970	0.49	0.4284	0.3264	0.306
8-way	CTB9350/8A	21-2370	0.56	0.4386	0.4029	0.3672
9-way	CTB9350/9A	21-1971	0.63	0.5202	0.459	0.3876
10-way	CTB9350/10A	21-2372	0.70	0.5508	0.4998	0.459
11-way	CTB9350/11A	21-1972	0.77	0.6324	0.5508	0.4794
12-way	CTB9350/12A	21-2374	0.85	0.663	0.6018	0.5508
14-way	CTB9350/14A	21-2375	1.05	0.8466	0.765	0.7038

Top entry header - closed

2-way	CTB9300/2A	21-2380	0.11	0.0918	0.0714	0.0592
3-way	CTB9300/3A	21-2382	0.13	0.102	0.0826	0.0765
4-way	CTB9300/4A	21-2384	0.18	0.1632	0.1214	0.1051
5-way	CTB9300/5A	21-2386	0.23	0.1938	0.1642	0.152
6-way	CTB9300/6A	21-2388	0.28	0.2142	0.1969	0.1785
7-way	CTB9300/7A	21-1973	0.32	0.2652	0.2142	0.1938
8-way	CTB9300/8A	21-2390	0.37	0.2856	0.2601	0.2397
9-way	CTB9300/9A	21-1974	0.41	0.3264	0.2856	0.255
10-way	CTB9300/10A	21-2392	0.45	0.357	0.3264	0.3009
11-way	CTB9300/11A	21-1975	0.46	0.3876	0.3366	0.306
12-way	CTB9300/12A	21-2394	0.51	0.4182	0.3723	0.3193



5.08mm pitch 12A Plug-in terminal blocks



Two part plug and header 5.08mm pitch PCB terminal blocks with screw terminals that can accommodate cables up to 3.0mm² (12AWG) and have a rating of 12A 380V AC.

- 5.08mm pitch
- 12A rating

- Header is available either as a vertical or horizontal mounting type and with either open or closed ends
- Rising clamp
- UL, VDE, IMQ and CE approved

Technical specification

Operating voltage	380V AC
Current rating	12A
Connector pitch	5.08mm
Conductor size max.	3.0mm ²
Moulding material	Flame retardant (UL94V-0) Polyamide 6.6
Metal parts	M3 steel zinc colour passivated and tropicalised
PCB hole size	1.4mm
Operating temperature range	-20°C to +125°C

Type	Camden part no.	Order code	1+	25+	100+	250+
Free plugs						
2-way	CTB9208/2	21-2500	0.47	0.3876	0.3366	0.2489
3-way	CTB9208/3	21-2502	0.71	0.561	0.4947	0.459
4-way	CTB9208/4	21-2504	0.93	0.7344	0.6436	0.5855
5-way	CTB9208/5	21-2506	1.10	0.9384	0.8537	0.765
6-way	CTB9208/6	21-2508	1.22	1.01	0.9272	0.7732
7-way	CTB9208/7A	21-1976	1.38	1.26	1.04	0.9486
8-way	CTB9208/8	21-2510	1.85	1.58	1.44	1.17
9-way	CTB9208/9	21-1977	1.99	1.68	1.46	1.22
10-way	CTB9208/10	21-2512	2.18	1.81	1.49	1.28
11-way	CTB9208/11	21-1978	2.26	1.94	1.65	1.50
12-way	CTB9208/12	21-2514	2.77	2.16	1.95	1.77

Vertical free plugs

2-way	CTB92VJ/2S	21-1900	0.49	0.3978	0.357	0.3264
3-way	CTB92VJ/3S	21-1901	0.56	0.4794	0.4386	0.4182
4-way	CTB92VJ/4S	21-1902	0.98	0.7854	0.714	0.6528
5-way	CTB92VJ/5S	21-1903	1.07	0.9384	0.8058	0.7242
6-way	CTB92VJ/6S	21-1904	1.22	1.08	0.9282	0.8568
7-way	CTB92VJ/7S	21-1979	1.52	1.24	1.14	1.05
8-way	CTB92VJ/8S	21-1905	1.75	1.38	1.28	1.17
9-way	CTB92VJ/9S	21-1980	1.95	1.60	1.47	1.35
10-way	CTB92VJ/10S	21-1906	2.25	1.79	1.60	1.43
11-way	CTB92VJ/11S	21-1981	2.39	1.96	1.80	1.65
12-way	CTB92VJ/12S	21-1907	2.54	2.09	1.89	1.75

Side entry header - open

2-way	CTB9358/2A0	21-2520	0.13	0.102	0.0867	0.0806
3-way	CTB9358/3A0	21-2522	0.21	0.1632	0.1499	0.1377
4-way	CTB9358/4A0	21-2524	0.22	0.1836	0.1734	0.1571
5-way	CTB9358/5A0	21-2526	0.34	0.2754	0.2346	0.2142
6-way	CTB9358/6A0	21-2528	0.42	0.3264	0.3009	0.2754
7-way	CTB9358/7A0	21-1982	0.49	0.4284	0.3264	0.306
8-way	CTB9350/8A0	21-2530	0.54	0.4386	0.3978	0.3672
9-way	CTB9358/9	21-1983	0.63	0.5202	0.459	0.3876
10-way	CTB9358/10A0	21-2532	0.70	0.5508	0.4998	0.459
11-way	CTB9358/11A0	21-1984	0.77	0.6324	0.5508	0.4794
12-way	CTB9358/12A0	21-2534	0.85	0.663	0.6018	0.5508

Top entry header - open

2-way	CTB9308/2A0	21-2540	0.12	0.0918	0.0704	0.0632
3-way	CTB9308/3A0	21-2542	0.15	0.1326	0.0969	0.0816
4-way	CTB9308/4A0	21-2544	0.18	0.153	0.1265	0.1102
5-way	CTB9308/5A0	21-2546	0.20	0.1632	0.1377	0.1275
6-way	CTB9308/6A0	21-2548	0.26	0.2142	0.1805	0.1642
7-way	CTAB9308/70	21-1985	0.32	0.2652	0.2142	0.1938
8-way	CTB9308/8A0	21-2550	0.33	0.2754	0.2295	0.2081
9-way	CTAB9308/9A0	21-1986	0.41	0.3264	0.2856	0.255
10-way	CTB9308/10A0	21-2552	0.44	0.3468	0.3142	0.2632
11-way	CTAB9308/11A0	21-1987	0.46	0.3876	0.3366	0.306

Side entry header - closed

2-way	CTB9358/2	21-2560	0.12	0.0918	0.0857	0.0796
3-way	CTB9358/3	21-2562	0.21	0.1632	0.1499	0.1377
4-way	CTB9358/4	21-2564	0.29	0.2244	0.1999	0.1836
5-way	CTB9358/5	21-2566	0.36	0.2754	0.2499	0.2295
6-way	CTB9358/6	21-2568	0.42	0.3264	0.3009	0.2754
7-way	CTB9358/7	21-1988	0.49	0.4284	0.3264	0.306
8-way	CTB9358/8	21-2570	0.56	0.4386	0.4029	0.3672
9-way	CTB9358/9	21-1989	0.63	0.5202	0.459	0.3876
10-way	CTB9358/10	21-2572	0.70	0.5508	0.4998	0.459
11-way	CTB9358/11	21-1990	0.77	0.6324	0.5508	0.4794
12-way	CTB9358/12	21-2574	0.85	0.663	0.6018	0.5508

Top entry header - closed

2-way	CTB9308/2	21-2580	0.12	0.0918	0.0724	0.0643
3-way	CTB9308/3	21-2582	0.15	0.1326	0.102	0.0887
4-way	CTB9308/4	21-2584	0.19	0.1632	0.1387	0.1071
5-way	CTB9308/5	21-2586	0.26	0.204	0.1642	0.1469
6-way	CTB9308/6	21-2588	0.27	0.2244	0.1867	0.1663
7-way	CTB9308/7	21-1991	0.32	0.2652	0.2142	0.1938
8-way	CTB9308/8	21-2590	0.34	0.2856	0.2397	0.2173
9-way	CTB9308/9	21-199				



12A Plug in terminal blocks



Plug and header PCB mounting terminal blocks. The headers are available as top entry or side entry and with open or closed ends.

- Operating voltage – 250V
- Current rating – 12A
- 5mm or 5.08mm pitch
- Rising clamp
- Housing – Polyamide 6,6
- Solder pin – brass, 1.0t, tin plated, 1.0 x 1.0mm

Type	Order code	1+	50+	100+	500+
5mm Free plug					
2-way	21-2800	0.23	0.1938	0.1632	0.1428
3-way	21-2801	0.35	0.2754	0.1785	0.153
4-way	21-2802	0.39	0.306	0.204	0.1734
5-way	21-2803	0.53	0.4284	0.2805	0.1887
6-way	21-2804	0.65	0.5304	0.3437	0.255
7 Way 12A 250V Free Plug	21-2880	0.69	0.57	0.42	0.36
7 Way 12A 250V Top Entry Close	21-2881	0.20	0.16	0.12	0.103
8-way	21-2805	0.90	0.714	0.459	0.3692
10-way	21-2806	1.21	0.9996	0.6375	0.459
12-way	21-2807	1.43	1.17	0.7517	0.5304
5mm Side entry open					
2-way	21-2808	0.08	0.051	0.0418	0.0296
3-way	21-2809	0.10	0.0918	0.0632	0.0459
4-way	21-2810	0.18	0.1428	0.1081	0.0887
5-way	21-2811	0.18	0.1428	0.1081	0.0765
6-way	21-2812	0.22	0.1734	0.1275	0.0867
8-way	21-2813	0.29	0.2244	0.1683	0.1132
10-way	21-2814	0.36	0.2856	0.2101	0.1428
12-way	21-2815	0.44	0.2958	0.2672	0.1734
5mm Top entry open					
2-way	21-2816	0.07	0.051	0.0337	0.0235
3-way	21-2817	0.10	0.0816	0.051	0.0357
4-way	21-2818	0.14	0.1122	0.0694	0.049
5-way	21-2819	0.17	0.1326	0.0887	0.0581
6-way	21-2820	0.20	0.153	0.104	0.0704
8-way	21-2821	0.29	0.2244	0.1397	0.102
10-way	21-2822	0.34	0.2754	0.1785	0.1326
5mm Side entry closed					
2-way	21-2824	0.08	0.051	0.0439	0.0296
3-way	21-2825	0.10	0.0918	0.0632	0.0459
4-way	21-2826	0.14	0.1224	0.0887	0.0571
5-way	21-2827	0.18	0.1428	0.1081	0.0714
6-way	21-2828	0.22	0.1734	0.1275	0.0867
8-way	21-2829	0.29	0.2244	0.1785	0.1142
12-way	21-2831	0.44	0.3366	0.2805	0.1938
5mm Top entry closed					
2-way	21-2832	0.05	0.051	0.0357	0.0286
3-way	21-2833	0.09	0.0714	0.051	0.0337
4-way	21-2834	0.12	0.0918	0.0694	0.0541
5-way	21-2835	0.14	0.1224	0.0887	0.0765
6-way	21-2836	0.17	0.1326	0.104	0.0816
8-way	21-2837	0.23	0.1836	0.1397	0.0918
10-way	21-2838	0.29	0.2244	0.1785	0.1142
12-way	21-2839	0.33	0.2754	0.2101	0.1397
5.08mm Free plug					
2-way	21-2840	0.17	0.153	0.1122	0.0867
3-way	21-2841	0.28	0.2142	0.1428	0.1326
4-way	21-2842	0.36	0.2754	0.1938	0.1632
5-way	21-2843	0.63	0.4998	0.3182	0.2142
6-way	21-2844	0.56	0.4488	0.3264	0.2652
8-way	21-2845	0.77	0.6834	0.459	0.3978
10-way	21-2846	0.91	0.765	0.561	0.4692
12-way	21-2847	1.01	0.9078	0.663	0.561
5.08mm Side entry open					
2-way	21-2848	0.08	0.051	0.0428	0.0296
3-way	21-2849	0.10	0.0918	0.0694	0.0459
4-way	21-2850	0.17	0.1326	0.0765	0.0694
5-way	21-2851	0.19	0.153	0.1275	0.10
6-way	21-2852	0.22	0.1734	0.1336	0.102
10-way	21-2854	0.36	0.2856	0.2224	0.1907
12-way	21-2855	0.45	0.3468	0.2805	0.2346
5.08mm Top entry open					
2-way	21-2856	0.05	0.0408	0.0337	0.0255
3-way	21-2857	0.09	0.0714	0.051	0.0347
4-way	21-2858	0.12	0.0918	0.0694	0.0479
5-way	21-2859	0.14	0.1224	0.0887	0.0663
6-way	21-2860	0.17	0.1428	0.1142	0.0887

8-way	21-2861	0.23	0.1836	0.1459	0.1081
10-way	21-2862	0.33	0.2448	0.1907	0.1591
12-way	21-2863	0.35	0.2754	0.204	0.1734

5.08mm Side entry closed

2-way	21-2864	0.08	0.0714	0.0377	0.0326
3-way	21-2865	0.15	0.102	0.0765	0.0592
4-way	21-2866	0.15	0.1224	0.102	0.0765
5-way	21-2867	0.19	0.1428	0.1204	0.0918
6-way	21-2868	0.23	0.1836	0.153	0.101
8-way	21-2869	0.31	0.2346	0.1785	0.1326
10-way	21-2870	0.36	0.2958	0.2162	0.1785
12-way	21-2871	0.45	0.3468	0.2652	0.1938

5.08mm Top entry closed

2-way	21-2872	0.05	0.0408	0.0316	0.0255
3-way	21-2873	0.09	0.0714	0.051	0.0428
4-way	21-2874	0.13	0.102	0.0826	0.0602
5-way	21-2875	0.15	0.1224	0.0887	0.0785
6-way	21-2876	0.17	0.1326	0.1081	0.0836
8-way	21-2877	0.23	0.1836	0.1397	0.1081
10-way	21-2878	0.29	0.2244	0.1785	0.1326
12-way	21-2879	0.36	0.2856	0.2295	0.1785



7.5mm pitch 12A Plug-in terminal blocks



Two part plug and header 7.5mm pitch PCB terminal blocks with screw terminals that can accommodate cables up to 2.5mm² and have a rating of 12A 750V AC.

- 7.5mm pitch
- 12A rating
- Header is available either as a horizontal or vertical mounting type and with either open or closed ends
- Rising clamp
- UL, VDE, IMQ and CE approved

Technical specification	
Operating voltage	750V AC
Current rating	12A
Connector pitch	7.5mm
Conductor size	2.5mm ²
Moulding material	Flame retardant (UL94V-0) polyamide 66
Metal parts	M3 steel zinc colour passivated and tropicalised
PCB hole size	1.4mm
Operating temperature range	-20°C to +125°C

Type	Camden part no.	Order code	1+	25+	100+	250+
Free plugs						
2-way	CTB9400/2A	21-2400	0.46	0.3468	0.2958	0.2652
3-way	CTB9400/3A	21-2402	0.69	0.5304	0.4488	0.3978
4-way	CTB9400/4A	21-2404	0.91	0.6936	0.5814	0.51
5-way	CTB9400/5A	21-2406	1.26	0.9588	0.8058	0.6834
6-way	CTB9400/6A	21-2408	1.42	1.06	0.8772	0.7854
Side entry header – open						
2-way	CTB9550/2A0	21-2416	0.14	0.1122	0.102	0.0938
3-way	CTB9550/3A0	21-2418	0.20	0.1632	0.153	0.1408
5-way	CTB9550/5A0	21-2422	0.35	0.2754	0.255	0.2356
Top entry header – open						
2-way	CTB9500/2A0	21-2432	0.11	0.0918	0.0857	0.0796
3-way	CTB9500/3A0	21-2434	0.17	0.1428	0.1285	0.1193
4-way	CTB9500/4A	21-2436	0.23	0.1836	0.1714	0.1581
5-way	CTB9500/5A0	21-2438	0.29	0.2346	0.2142	0.1979
		21-2448	0.12	0.102	0.0938	0.0887
3-way	CTB9550/3A	21-2450	0.22	0.1734	0.153	0.1326
4-way	CTB9550/4A	21-2452	0.28	0.2244	0.204	0.1887
5-way	CTB9550/5A	21-2454	0.33	0.2754	0.255	0.2346
6-way	CTB9550/6A	21-2456	0.40	0.357	0.3264	0.2856
		21-2464	0.11	0.0918	0.0857	0.0796
3-way	CTB9500/3A	21-2466	0.17	0.1428	0.1285	0.1193
4-way	CTB9500/4A	21-2468	0.23	0.1836	0.1714	0.1581
6-way	CTB9500/6A	21-2472	0.40	0.3162	0.2754	0.2448



5.0mm Plug-in rising clamp terminal with screw flanges

A wide range of plug-in terminal blocks with a 5mm pitch and a rating of 380V 16A.

- Available in 2, 3, 4, 6, 8, 10 and 12-pole options
- 0.2 to 4mm² (24 to 12AWG)
- Plug-in
- Screw flanges
- Available in vertical and horizontal style
- Polarised mouldings
- Moulded in green UL94-V0 flame retardant PA66
- Professional rising clamp terminals



- Captive screws
- Guided pin alignment
- **UL, VDE and CE** approved

Technical specification				
Poles	Type	Length	Camden part no.	Order code
2	Female connector	20mm	CTBA9200/2FL	21-0542
3	Female connector	26mm	CTBA9200/3FL	21-0544
4	Female connector	30mm	CTBA9200/4FL	21-0546
6	Female connector	40mm	CTBA9200/6FL	21-0548
8	Female connector	50mm	CTBA9200/8FL	21-0550
10	Female connector	60mm	CTBA9200/10FL	21-0552
12	Female connector	70mm	CTBA9200/12FL	21-0554
2	PCB Mounting male vertical	20mm	CTBA9300/2FL	21-0556
3	PCB Mounting male vertical	26mm	CTBA9300/3FL	21-0558
4	PCB Mounting male vertical	30mm	CTBA9300/4FL	21-0560
6	PCB Mounting male vertical	40mm	CTBA9300/6FL	21-0562
8	PCB Mounting male vertical	50mm	CTBA9300/8FL	21-0564
10	PCB Mounting male vertical	60mm	CTBA9300/10FL	21-0566
12	PCB Mounting male vertical	70mm	CTBA9300/12FL	21-0568
2	PCB Mounting male horizontal	20mm	CTBA9350/2FL	21-0570
3	PCB Mounting male horizontal	26mm	CTBA9350/3FL	21-0572
4	PCB Mounting male horizontal	30mm	CTBA9350/4FL	21-0574
6	PCB Mounting male horizontal	40mm	CTBA9350/6FL	21-0576
8	PCB Mounting male horizontal	50mm	CTBA9350/8FL	21-0578
10	PCB Mounting male horizontal	60mm	CTBA9350/10FL	21-0580
12	PCB Mounting male horizontal	70mm	CTBA9350/12FL	21-0582
Dielectric strength: 2000V AC				
Insulation resistance: >2MΩ				
Working temperature: -40°C to +105°C				
Material: UL94 V-0 flame retardant PA68				
Pin/terminal: Tinned phosphor bronze				
Rising clamp: Nickel plated brass				
Screw type: M3 steel zinc plated				
Screw max. torque: 0.5Nm				
PCB hole size: 1.5mm diameter (recommended)				

Type	Order code	1+	50+	100+	500+
Female connector					
2-pole Length 20.3mm	21-0542	0.46	0.3978	0.3468	0.2958
3-pole Length 26.4mm	21-0544	0.69	0.6018	0.5304	0.4386
6-pole Length 40.6mm	21-0548	1.38	1.20	1.01	0.8772
8-pole Length 50.8mm	21-0550	1.83	1.60	1.38	1.16
10-pole Length 61.0mm	21-0552	2.23	2.02	1.72	1.47
12-pole Length 71.1mm	21-0554	2.64	2.40	2.03	1.75
PCB Mount vertical					
2-pole Length 20.3mm	21-0556	0.37	0.3162	0.2754	0.2346
3-pole Length 26.4mm	21-0558	0.55	0.4794	0.4182	0.357
6-pole Length 40.6mm	21-0562	1.11	0.969	0.8466	0.7038
8-pole Length 50.8mm	21-0564	1.48	1.30	1.11	0.9384
10-pole Length 61.0mm	21-0566	1.79	1.58	1.39	1.15
12-pole Length 71.1mm	21-0568	2.13	1.93	1.62	1.42
6-pole Length 40.6mm	21-0576	1.11	0.969	0.8364	0.7038
8-pole Length 50.8mm	21-0578	1.48	1.30	1.11	0.9384
10-pole Length 61.0mm	21-0580	1.83	1.60	1.40	1.17
12-pole Length 71.1mm	21-0582	2.13	1.93	1.67	1.41



5.08mm Plug-in rising clamp terminal with screw flanges

- A wide range of plug-in terminal blocks with a 5.08mm pitch and a rating of 380V 16A.
- Available in 2, 3, 4, 6, 8, 10 and 12-pole options
 - 0.2 to 4mm² (24 to 12AWG)
 - Plug-in
 - Screw flanges
 - Available in vertical and horizontal style
 - Polarised mouldings
 - Moulded in green UL94-V0 flame retardant PA66
 - Professional rising clamp terminals
 - Captive screws
 - Guided pin alignment
 - **UL, VDE and CE** approved



Technical specification				
Poles	Type	Length	Camden part no.	Order code
2	Female connector	20.3mm	CTBA9208/2FL	21-0500
3	Female connector	26.4mm	CTBA9208/3FL	21-0502
4	Female connector	30.5mm	CTBA9208/4FL	21-0504
6	Female connector	40.6mm	CTBA9208/6FL	21-0506
8	Female connector	50.8mm	CTBA9208/8FL	21-0508
10	Female connector	61.0mm	CTBA9208/10FL	21-0510
12	Female connector	71.1mm	CTBA9208/12FL	21-0512
2	PCB Mounting male vertical	20.3mm	CTBA9308/2FL	21-0514
3	PCB Mounting male vertical	26.4mm	CTBA9308/3FL	21-0516
4	PCB Mounting male vertical	30.5mm	CTBA9308/4FL	21-0518
6	PCB Mounting male vertical	40.6mm	CTBA9308/6FL	21-0520
8	PCB Mounting male vertical	50.8mm	CTBA9308/8FL	21-0522
10	PCB Mounting male vertical	61.0mm	CTBA9308/10FL	21-0524
12	PCB Mounting male vertical	71.1mm	CTBA9308/12FL	21-0526
2	PCB Mounting male horizontal	20.3mm	CTBA9358/2FL	21-0528
3	PCB Mounting male horizontal	26.4mm	CTBA9358/3FL	21-0530
4	PCB Mounting male horizontal	30.5mm	CTBA9358/4FL	21-0532
6	PCB Mounting male horizontal	40.6mm	CTBA9358/6FL	21-0534
8	PCB Mounting male horizontal	50.8mm	CTBA9358/8FL	21-0536
10	PCB Mounting male horizontal	61.0mm	CTBA9358/10FL	21-0538
12	PCB Mounting male horizontal	71.1mm	CTBA9358/12FL	21-0540
Dielectric strength: 2000V AC				
Insulation resistance: >2MΩ				
Working temperature: -40°C to +105°C				
Material: UL94 V-0 flame retardant PA68				
Pin/terminal: Tinned phosphor bronze				
Rising clamp: Nickel plated brass				
Screw type: M3 steel zinc plated				
Screw max. torque: 0.5Nm				
PCB hole size: 1.5mm diameter (recommended)				

Type	Order code	1+	50+	100+	500+
Female connector					
2-pole Length 20.3mm	21-0500	0.46	0.3978	0.3468	0.2958
3-pole Length 26.4mm	21-0502	0.69	0.6018	0.5304	0.4386
4-pole Length 30.5mm	21-0504	0.93	0.8058	0.6936	0.5814

6-pole Length 40.6mm	21-0506	1.38	1.20	1.01	0.8772
10-pole Length 61.0mm	21-0510	2.23	2.02	1.72	1.47
12-pole Length 71.1mm	21-0512	2.64	2.40	2.03	1.75

PCB Mounting male vertical					
2-pole Length 20.3mm	21-0514	0.37	0.3162	0.2754	0.2346
3-pole Length 26.4mm	21-0516	0.55	0.4794	0.4182	0.357
4-pole Length 30.5mm	21-0518	0.74	0.6426	0.5508	0.4692
10-pole Length 61.0mm	21-0524	1.83	1.61	1.42	1.17
12-pole Length 71.1mm	21-0526	2.13	1.93	1.62	1.42

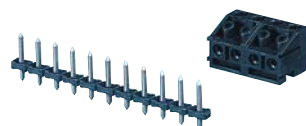
PCB Mount horizontal					
2-pole Length 20.3mm	21-0528	0.36	0.3162	0.2754	0.2346
3-pole Length 26.4mm	21-0530	0.56	0.4794	0.4182	0.357
4-pole Length 30.5mm	21-0532	0.74	0.6426	0.5508	0.4692
6-pole Length 40.6mm	21-0534	1.11	0.969	0.8364	0.7038
10-pole Length 61.0mm	21-0538	1.83	1.60	1.40	1.17
12-pole Length 71.1mm	21-0540	2.13	1.93	1.67	1.41



10A Pluggable terminal blocks

Pluggable PCB terminal blocks which features a PCB mounting male pin strip and terminal blocks which mate with this header.

- **5mm pitch**
- 10A rating
- The terminal blocks can be mounted vertically or 90° to the PCB
- Interlocking
- Pin strip is supplied as a 24-way connector but this can be cut to the required length
- **UL** approved
- Please note: The pin strip is sold as a separate item (order code **21-2646**)

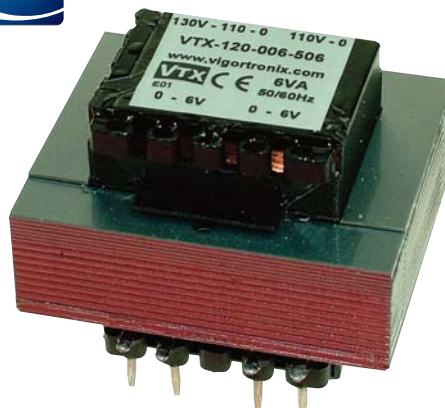


Technical specification	
Current rating	10A 380V AC
Insulation resistance	5MΩ
Moulding	UL94V-0 black flame retardant glass filled polyester
Terminals	5µ tinned, copper flashed brass
Wire protector	Beryllium copper
Recommended PCB hole	1.5mm ²
Conductor acceptance	1.5mm ²
Operating temperature range	-33° to +120°C
Mfrs. part nos.	2-way block CTB1301/2A 3-way block CTBA301/3A 4-way block CTBA301/4A 5-way block CTBA301/5A 6-way block CTBA301/6A 8-way block CTBA301/8A 24-way pin strip CTBA301/PS24

Type	Order code	1+	100+	500+	1000+
2-way Block 10	21-2640	0.24	0.1938	0.153	0.1326
3-way Block 15	21-2642	0.35	0.2856	0.2244	0.1989
4-way Block 20	21-2644	0.46	0.3876	0.2958	0.2652
5-way Block 25	21-2648	0.58	0.4794	0.3672	0.3366
6-way Block 30	21-2650	0.69	0.561	0.4386	0.3978
8-way Block 40	21-2652	0.91	0.7548	0.5814	0.5202
24-way Pin strip	21-2646	0.63	0.4998	0.3978	0.3672

www.rapidonline.com

5 Series transformers



From only **£3.85** 88-5160

Fused



Fused terminal blocks

A pair of 3-way terminal blocks moulded in Polyamide 6,6 complete with in-line fuseholder.

- Available in two sizes; to suit 20 x 5mm or 1 1/4 x 1/4in fuses
- Pull up latch enabling easy replacement
- Approved to **VDE** with additional **SEMKO** and **SEV** approval on the 20mm version



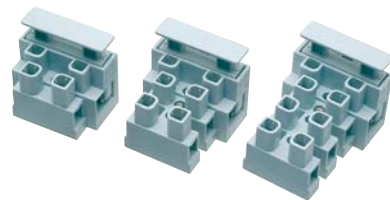
Technical specification

Current rating	1in/1 1/4 type	20mm type
Voltage	380V AC	250V AC
Housing material	Polyamide 6,6	Polyamide 6,6
Insert material	Tinned brass	Tinned brass
Conductor size max	10mm ²	6mm ²
Temperature range	-40°C to +100°C	-40°C to +100°C
Metaway type	1003S103E	503S103E

Type	Order code	1+	10+	100+	500+
20 x 5mm Fused block	21-0720	0.78	0.7181	0.6426	0.5896
1 1/4 x 1/4 Fused block	21-0730	0.78	0.7181	0.6426	0.5896



Fused terminal block



These terminal blocks have been moulded in polyamide, complete with a unique fuse facility.

- Interlocking fuse holder
- Block is secured by a single fixing screw which is threaded on the earth terminal
- Available in 4-pole options
- Suitable for 20x5mm style glass or ceramic type fuses
- Unique spare fuse facility
- 1-5-pole terminal strip with 5x 20 fuse holder to **IEC257**
- Anti-rotation spigot
- IP20 finger protection
- Cable entry 4mm² (2.5mm² with wire protector)
- Wire protector on fuse terminal as standard
- Meets creepage and clearance requirements of IEC (8mm)
- **16mm pitch**
- Also available are screw/dust protection covers for the 3- and 5-pole blocks (see price panel)
- Approved to **UL, IMQ, FEMKO, NEMKO, SEMKO** and **VDE**
- CamdenBoss **CTFBN** series

Technical specification

Current rating:	Fuseholder 13A Terminal 13A
Voltage rating:	Fuseholder 250V AC Terminal 440V AC
Fuseholder	5x 20mm
Moulding	Polyamide 66 rated UL94V-0
Terminal	Nickel plated brass
Fuse clip	Phosphor bronze
Screws	M3 7 micron zinc colour passivated and tropicalised
Wire acceptance	4mm ²
Temperature range	-40° to +125°C

Type	Order code	1+	10+	100+	500+
Single pole fused block	21-0740	0.44	0.3468	0.2958	0.2754
2-pole Fused block	21-0745	0.50	0.3876	0.3366	0.3162
3-pole Fused block	21-0750	0.60	0.459	0.3672	0.357
5-pole Fused block	21-0760	0.78	0.6324	0.561	0.459
Cover for 3-pole block	21-1777	0.17	0.1326	0.1224	0.1122
Cover for 5-pole block	21-1778	0.17	0.1326	0.1224	0.1122

No minimum order value
UK mainland only

Buying in bulk?

Get a quote and save money
on your order
01206 751166



or



sales@rapidelec.co.uk



10A Fused terminal block

A range of fused terminal blocks moulded in plastic complete with in-line fuseholder.

- Available in four pole sizes
- Pull up latch enabling easy replacement of fuse



Technical specification

Voltage rating	250V AC
Current rating	10A
Contact resistance	20mΩ
Screws	M3
Housing	UL94V-0

Fuse size 20 x 5mm

Type	Order code	1+	10+	100+
3-pole Fused block	21-0743	0.49	0.4488	0.3876



Mains fused terminal block

An economical 3-pole terminal strip with 5 x 20mm and 6.3 x 25mm fuse holder to IEC257. Available as a 3-pole or as a 2-pole in a 3-pole housing.

- Antirotation spigot
- IP20 finger protection
- Cable entry 10mm²
- 3-pole with earth screw and washer
- Meets creepage and clearance requirements of IEC
- 16mm pitch
- Camden **CMFTB** series



Technical specification

Voltage rating	250V AC
Current rating	13A
Working temperature	+125°C
Moulding	UL94V-0 flame retardant Polyamide 6,6
Terminal	Brass nickel plated
Fuse dip	Phosphor bronze
Screws	M3.5, 7 microns zinc, colour passivated and tropicalised
Approvals	CE
Manufacturers part no.	CMFTB

Type	Order code	1+	10+	100+
Terminal block 2-pole	21-0789	0.51	0.4488	0.4182
Terminal block 3-pole	21-0790	0.67	0.5712	0.5406

Scheduled orders

Rapid will store your order **FREE OF CHARGE** and then deliver the required amount along with an individual invoice on your specified dates.

Fax your scheduled order and required dates to:

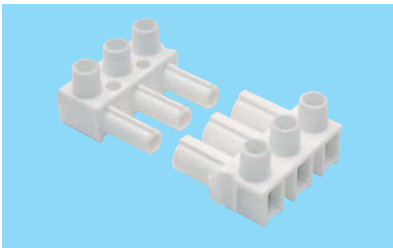


01206 751188

Shrouded pluggable



16A Shrouded terminal block



2 and 3-way terminal block system which offers a large number of connection variations.

- Plugs and sockets incorporate stand-offs on bases
- All connectors are polarised preventing accidental misconnection
- **Elkay type 131-110x** where x is no. of ways

Technical specification

Operating voltage	250V AC
Current rating	16A
Connector pitch	10mm
Housing material	White polyester rated UL94V-0
Terminal insert	Nickel plated copper alloy
Terminal screw	Plated steel
PCB hole size	1.2mm

Type	Order code	1+	10+	50+	100+
------	------------	----	-----	-----	------

Free plug

2-way	21-1150	0.36	0.2856	0.255	0.2346
3-way	21-1155	0.51	0.4386	0.3876	0.3468

Free socket

2-way	21-1180	0.36	0.2856	0.255	0.2346
3-way	21-1185	0.55	0.4488	0.3978	0.357

Terminal strips



Easy break terminal strips



These easy break terminal strips make life simpler for installers to create the exact number of poles required without having to use cutting tools when connecting copper conductors.

- Easy snapped into the required number of poles
- No remaining burrs
- No tools needed to cut to length
- Save time and money
- Supplied in strips of 12-poles
- Three sizes available encompassing insert sizes of 3, 3.5 and 4.4 diameter
- Available in black Polyamide 6,6 **UL94 V2**
- Standard insert is nickel-plated brass with zinc-plated steel screws
- Screws are supplied in open position
- Continuous working temperature range is -30°C to +110°C

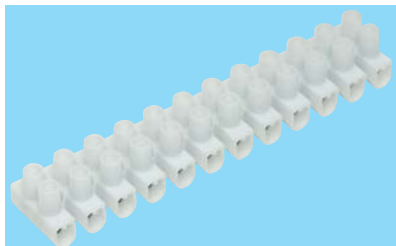
Technical specification

Length	Width	Inset size	Mfrs. part no.	Order code
19.5mm	17.5mm	3mm	CTS05431	21-1697
118.1mm	19mm	3.5mm	CTS05433	21-1698
142.2mm	20.8mm	4.4mm	CTS05434	21-1699

Type	Order code	1+	25+	100+
Inset size 3mm	21-1697	0.80	0.6528	0.5916
Inset size 3.5mm	21-1698	0.86	0.6936	0.6324
Inset size 4.4mm	21-1699	0.87	0.8262	0.8058

TruConnect

Easy break terminal strips



These terminal strips can easily be broken just using your hand to the required length ensuring the best fit for your design requirements. They are ideal for all suitable applications, being specifically designed for installers, adapting perfectly to their way of working. The separation of poles is easy and quick, as it is not necessary to use tools. The use of these terminal strips means a very important saving of time.

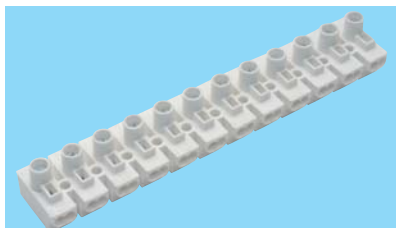
Each strip has 12 circuits, with a mounting hole between each circuit. Both screws and contact areas are recessed in the housing for safety and to help prevent short circuits.

- All metal parts are completely recessed
- Each strip has 12 circuits
- Easily broken by hand to the required length
- Available for **15, 20, 30 and 50A** applications
- Wire range 12 - 4AWG

Type	Order code	1+	25+	100+	500+
15A, 12-way easy break	21-3086	0.62	0.4182	0.3468	0.2754
20A, 12-way easy break	21-3087	0.37			
30A, 12-way easy break	21-3088	0.49			
50A, 12-way easy break	21-3089	0.81			



16A Screw/screwless terminal blocks



A 12-way terminal block with a screw terminal on one side and two screwless terminals on the other.

- May be cut into shorter lengths
- Particularly suited to lighting equipment applications
- The screwless terminals will accommodate either solid or tinned stranded wire
- Current rating 16A

Type	Order code	1+	25+	100+	500+
12-way	21-1260	1.25	1.01	0.9109	0.8354



32A Ceramic terminal block 3-pole

This connection block from Camden Electronics is suitable for use in electrical and lighting applications where high temperatures are expected.



The temperature resistant connection block features a DIN 40685 porcelain insulation body capable of withstanding temperatures up to 1000°C. The nickel-plated brass inserts feature a working temperature of 350°C.

- 3-pole
- Insulating body: Porcelain (DIN 40685)
- Insert: Nickel-plated brass 3mm
- Screws: Zinc-plated steel CQ-15 and metric thread
- CE approved

Type	Order code	1+	25+	100+	500+
32A ceramic term. block 3 p	21-1237	0.96	0.9078	0.867	0.8058

RIKO Steatite terminal blocks

These steatite terminal blocks have been designed for high temperature applications. Steatite is an alternative to ceramics. The advantages over ceramics include higher density and higher dielectric strength.



- 2 or 3-pole versions available
- 24A or 57A versions
- Galvanised brass inserts
- Stainless steel wire protectors

Code	Voltage	Cable size	Width	Height	Length
21-1230	250V	1.5 - 6mm ²	18mm	15mm	20mm
21-1232	250V	1.5 - 6mm ²	18mm	15mm	33mm
21-1238	450V	2.5 - 16mm ²	29mm	22mm	35mm
21-1240	450V	2.5 - 16mm ²	29mm	22mm	50mm

Type	Rating	Order code	1+	25+	100+	500+
2-way	24A	21-1230	0.90	0.765	0.7344	0.6834
3-way	24A	21-1232	0.97	0.9078	0.867	0.8058
2-way	57A	21-1238	1.10	0.9894	0.9588	0.9282
3-way	57A	21-1240	1.54	1.43	1.37	1.32



Teebox IP54 3-way terminal block

This unique cable splitter junction box has been designed for use with circular profile cable.



- Supplied complete with a 3-pole terminal block and hardware for direct fixing to wood or brickwork etc.
- Suitable for many industrial, commercial and domestic applications
- Manufactured in black with a hinged lid incorporating a tamper resistant snap-shut action
- Integrated terminal block features barrier inserts to ease cable installation and retention
- Dimensions 82 x 70 x 19mm
- Fixing distance is 49mm
- Rated to **IP54**

Type	Order code	1+	10+	100000
IP54 3-way Block, black	04-0345	3.23	3.00	0.00

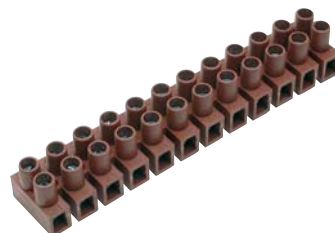
6 days per week phone orders

Monday to Friday 8am to 8pm
Saturday 9am to 5pm

Disposable gloves



High temperature terminal blocks



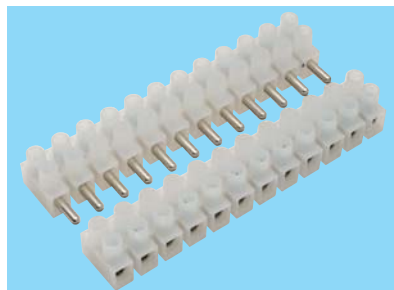
12-way high temperature Nylon 6.6 terminal blocks which can be cut to shorter lengths.

- Versions with or without wire protectors are available
- Raised based versions are available for applications where creepage and clearance distances must be observed
- Available in 10A and 16A ratings

Type	Wire protector	Order code	1+	25+	100+	500+
10A	No	21-1262	0.99	0.7925	0.7181	0.6538
10A w/p raised	Yes	21-1270	1.48	1.18	1.07	0.9853
16A w/p Raised	Yes	21-1278	2.45	1.99	1.83	1.69



Pluggable terminal strips



Pluggable industrial quality terminal strips moulded in PA6 with flammability rating of **UL94V-2**.

- Matching male and female supplied in 12 way lengths
- Can be cut to size
- Available in 6A or 10A ratings

Type	Order code	1+	10+	50+	100+
8mm/6A	21-2496	2.09	1.69	1.55	1.44
10mm/10A	21-2497	2.38	1.95	1.79	1.65
12mm/10A	21-2498	3.98	3.57	2.96	2.70



Industrial terminal blocks

Industrial quality terminal blocks moulded in self extinguishing Nylon 6.6 with flammability rating to **UL94V-2**.

- Supplied in 12-way lengths which can be cut to the required size
- Terminal blocks can be supplied with or without wire protectors



Technical specification

Housing material	Nylon 6.6 (UL94V-2)			
Contacts	Nickel plated brass			
Screws	5 micron steel zinc colour passivated			
Wire protectors	Stainless steel			
Max. voltage	450V AC			
Max. temperature	-55°C to +130°C			
Approvals	UL, IMQ and VDE			

	6A	10A	16A	32A
Max. conductor				
Size: less wire prot.	4.0mm ²	4.0mm ²	10.0mm ²	16.0mm ²
with wire prot.	2.5mm ²	2.5mm ²	6.0mm ²	10.0mm ²
Dimensions	95 x 16.4 x 14.5mm	117 x 21 x 17.6mm	140 x 23 x 21mm	174 x 31.6 x 24.6mm
Conductor pitch	8mm	10mm	12mm	14.5mm
Mftrs. part nos.				
less wire prot.	CTS431/12W	CTS433/12W	CTS434/12W	CTS435/12W
with wire prot.	CTS431/12	CTS433/12	CTS434/12	CTS435/12

Type	6A IND.TERM.BLOCK (LESS W/P)	Camdon Part No.	Order code	
	10A IND.TERM.BLOCK (LESS W/P)	CTS431/12W	21-1670	
	16A IND.TERM.BLOCK (LESS W/P)	CTS433/12W	21-1672	
	32A IND.TERM.BLOCK (LESS W/P)	CTS434/12W	21-1674	
	6A IND.TERM.BLOCK (WITH W/P)	CTS435/12W	21-1676	
	10A IND.TERM.BLOCK (WITH W/P)	CTS431/12	21-1678	
	16A IND.TERM.BLOCK (WITH W/P)	CTS433/12	21-1680	
	32A IND.TERM.BLOCK (WITH W/P)	CTS434/12	21-1682	
		CTS435/12	21-1684	

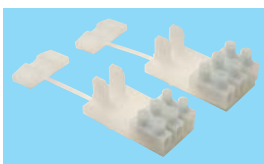
Type	Wire protector	Order code	1+	25+	100+	250+
6A	No	21-1670	0.91	0.7854	0.7446	0.6936
10A	No	21-1672	0.85	0.714	0.663	0.6222
16A	No	21-1674	1.13	1.01	0.9384	0.9078
32A	No	21-1676	2.03	1.73	1.61	1.52
6A	Yes	21-1678	1.14	0.9792	0.9078	0.8568
10A	Yes	21-1680	1.25	1.07	0.9894	0.9384
16A	Yes	21-1682	1.73	1.48	1.38	1.31
32A	Yes	21-1684	3.14	2.70	2.50	2.36



Terminal strips with strain relief

A range of commercial quality polythene moulded terminal blocks that are ideal for preventing fraying and strain on wires.

- 3 wire terminal strip configurations
- Strain relief can be released and reset
- Natural colour
- Takes the strain on wires
- Prevents conductors from twisting
- Protects wire coating from abrasion and friction
- Moulded from PA6 to UL94V-2
- Available in 8, 10 and 12mm pitch settings



Type	Order code	1+	25+	50+	100+
10mm Pitch 3-pole	21-0822	0.70	0.6426	0.5814	0.5202



Terminal blocks

Commercial quality polythene moulding terminal blocks offered in a variety of current ratings.

- 12-way which may be readily subdivided
- Max. temperature +60°C

Current rating	Dimensions	Order code	1+	10+	100+
3A	92.5x15.5x12	21-0100	0.84	0.6018	0.51
5A	109x16x13.5	21-0105	0.60	0.459	0.3876
15A	132x22.5x19	21-0110	1.14	0.867	0.7344

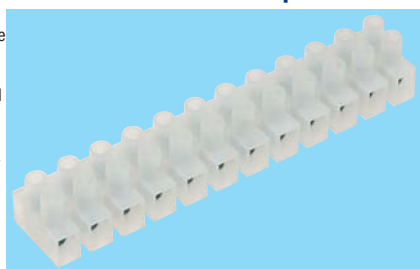


Timed delivery service
See page 4 for table of charges



Feed through terminal blocks without wire protector

These two screw terminal strips are offered to ensure the best fit for your design requirements. These connecting strips are ideal for telecommunications and data technology. All these terminal strips meet or exceed industry standards and are available without wire protectors.



Both screws and contact and all metal parts are completely recessed in the housing for safety and to help prevent short circuits. Each strip has 12 circuits, with a mounting hole between each circuit. They can also be easily shortened with a knife or saw.

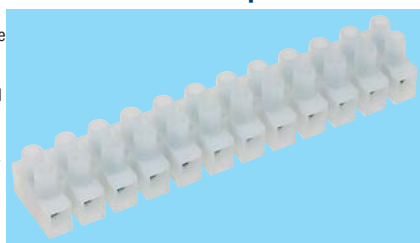
- Supplied without wire protectors
- All metal parts are completely recessed
- Each strip has 12 circuits
- Easily cut to the required length
- Wire range 12 - 4AWG

Technical specification		
Approvals	USA Standard	CE
Electrical		
Standard	UL	IEC
Rated voltage	300V	450V, 750V
Rated current	20A, 30A, 50A	32A, 41A, 57A, 76A
Wire range	20-12, 18-10, 14-10, 12-8AWG	0.5-4.0, 1.0-6.0, 2.5-10, 6.0-16mm ²
Mechanical		
Ambient temperature	-40°C - +115°C	-40°C - +115°C
Dimensions		
Pitch	8.2mm (.323 inch), 10.0mm (.394 inch), 11.5mm (.453 inch), 15.0mm (.591 inch)	8.2mm (.323 inch), 10.0mm (.394 inch), 11.5mm (.453 inch), 15.0mm (.591 inch)
Poles	12	12
Material		
Housing	PA66, UL94V-2	PA66, UL94V-2
Current carrier	Clad copper strips, Cr3+ Zn plated	Clad copper strips, Cr3+ Zn plated
Screws	Steel, Cr3+ Zn plated	Steel, Cr3+ Zn plated
Type	Order code	1+ 25+ 100+ 500+
20A, 12-way terminal strip	21-3079	0.69 0.561 0.4641 0.3713
50A, 12-way terminal strip	21-3081	1.58 1.26 1.06 0.8446



Feed through terminal blocks with wire protector

These two screw terminal strips are offered to ensure the best fit for your design requirements. These connecting strips are ideal for telecommunications and data technology. All these terminal strips meet or exceed industry standards and are available with wire protectors.



Each strip has 12 circuits, with a mounting hole between each circuit. They can also be easily shortened with a knife or saw. The wire protectors help to eliminate twisting and breakage of stranded wire during connections. Both screws and contact areas are recessed in the housing for safety and to help prevent short circuits.

- Supplied with wire protectors
- All metal parts are completely recessed
- Each strip has 12 circuits
- Easily cut to the required length
- Wire range 12 - 4AWG

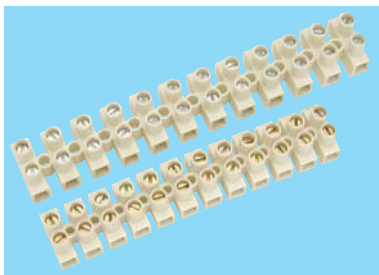
Technical specification		
Approvals	USA Standard	CE
Electrical		
Standard	UL	IEC
Rated voltage	300V	450V
Rated current	15A, 20A, 30A, 50	15A, 20A, 30A, 50
Wire range	20-12AWG	0.5-4.0, 1.0-6.0, 2.5-10, 6.0-16mm ²
Mechanical		
Ambient temperature	-40°C - +110°C	-40°C - +110°C
Dimensions		
Poles	12	12
Material		
Housing	PA66, UL94V-2	PA66, UL94V-2
Current carrier	Steel, Cr3+ Zn plated	Steel, Cr3+ Zn plated
Screws	Steel, Cr3+ Zn plated	Steel, Cr3+ Zn plated
Type	Order code	1+ 25+ 100+ 500+
15A, 12-way terminal strip	21-3082	0.87 0.6936 0.5804 0.4641



6A and 10A Terminal blocks

Pillar terminal blocks fitted with wire protectors.

- Available with or without wire protectors
- Available in 6 and 10A options
- Supplied in 12-pole lengths which may be cut to smaller lengths
- Polyamide 6,6 housing
- VDE approved



Technical specification		
Current rating	6A or 10A	
Voltage rating	400V	
Housing material	Polyamide 6.6 (UL94 V2)	
Insert material	Nickel plated brass	
Wire protectors	Stainless steel	
Operating temperature	+100°C	
Wire size	with protector 2.5mm ² without protector 6mm ²	
Current rating	Wire protectors	Order code
6A	No	21-1685
10A	No	21-1686
6A	Yes	21-1688
10A	Yes	21-1689

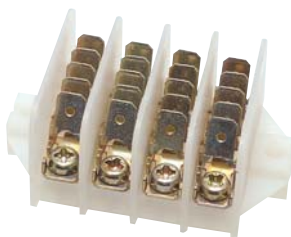
Type	Order code	1+	25+	100+	250+
6A	21-1685	0.75	0.5998	0.5467	0.5039
10A	21-1686	0.75	0.5998	0.5467	0.5039
6A Protected	21-1688	0.95	0.7497	0.6854	0.6324
10A Protected	21-1689	0.96	0.7609	0.6967	0.6426



Tab terminal block

Distribution connectors in 3 or 4-pole versions. Ideal for applications where a central cable distribution connector is required.

- Five 6.3mm tabs per pole
- One screw terminal per pole
- Ideal for applications requiring central cable distribution



Technical specification		
Current rating	16A	
Voltage rating	400V	
Contact material	Steel, zinc plated	
Housing material	Natural Polyamide 6.6	
Tab size	6.3 x 0.8mm	
Dimensions	3-way 52 x 37 x 28mm 4-way 63 x 37 x 28mm	
Operating temperature	+100°C	

Type	Order code	1+	10+	50+	100+
3W Tab terminal block	21-0712	1.20	1.08	1.01	0.9588
4W Tab terminal block	21-0714	2.07	1.83	1.67	1.58



Tab style terminal blocks

Tab style terminal blocks with barrier connectors suitable for medium duty applications. The polycarbonate mouldings allow relatively high working temperatures (up to 135°C) and are suitable for use with conductors with crimped terminals fitted. The tabs are fitted in two styles, firstly in a rivetted ?star? format as styles WE1 to WE42 which have various tab arrangements in flat, 45° & 90°. Alternatively tab styles WE53 to WE66 have flat tabs only with spacers between. These are particularly suitable for use with 3070A & B covers as shown A range of quality tab type terminal blocks with barrier

- Suitable for medium duty applications.
- Polycarbonate mouldings allow relatively high working temperatures up to +135°C
- Suitable for use with conductors with crimped terminals fitted
- Chassis mounting
- Available in 3, 4, and 6-pole options



Technical specification		
Mouldings	Polycarbonate, black, UL94 V0	
Tabs	Brass, nickel plated	
Rivets	Copper, tinned	
Maximum working temp	+135°C	
Tab terminals	25A	
Voltage rating	400V	

Type	Order code	1+	10+	50+	100+
3-pole	21-0715	1.56	1.24	1.13	1.04
4-pole	21-0716	2.31	1.81	1.64	1.51
6-pole	21-0717	3.27	2.62	2.36	2.16

Power tools section

Power tools



Cinch

15A Barrier terminal blocks



Barrier terminal blocks moulded in high impact thermoplastic rated **UL94V-0**.

- Available in screw to screw or screw to solder tag termination
- Cinch types **R44.18.0xx** and **R44.25.0xx** where xx is no. of ways

Technical specification		
Moulding	High impact thermoplastic (UL94V-0)	
Terminal plates	Nickel plated brass	
Maximum working voltage	750V DC or AC rms	
Current rating	15A	
Temperature range	-55°C to +100°C	
Dimensions	3-way 46 x 22.2 x 12.7 (above panel) FC = 38.08 4-way 55.52 x 22.2 x 12.7 (above panel) FC = 47.6 12-way 131.68 x 22.2 x 12.7 (above panel) FC = 123.76	

Type	Order code	1+	25+	100+	250+
3-way Screw to screw	21-0900	1.04	0.9078	0.8262	0.7344
4-way Sscrew to screw	21-0905	1.46	1.23	1.10	0.9996
12-way Screw to screw	21-0915	3.43	3.08	2.85	2.67
4-way Screw to tag	21-0945	1.48	1.22	1.12	1.01
12-way Screw to tag	21-0960	4.03	3.60	3.26	2.93



Barrier terminal blocks with spade lugs

These terminal blocks are of excellent quality and competitively priced. Tin plated brass spade lugs. (Solder terminals are also available; please see order codes **21-3075**, **21-3076** and **21-3077**).



The block's rugged construction of high impact material will protect the filter elements during installation and field service. Typical applications include filtering power supplies in telecommunications equipment, metering, industrial controls, instrumentation and EDP equipment.

- Screw to screw fitting
- Available in 3, 4 and 12-way options
- Housing: PC UL 94V-2
- Terminals: Brass, 0.8t, Tin-Plated
- Screws: Steel, M3.5 Ni-Plated
- Temperature range: -40°C - +80°C
- Withstand voltage: AC2000V/Min
- Insulation resistance: 1000MΩ/DC500V
- Wire range: 22-12AWG, 4.0mm²
- For full specification and schematics, please see datasheet

Technical specification		
Approvals	USA Standard	CE
Electrical		
Standard	UL	IEC
Rated voltage	300V	450V
Rated current	20A	32A
Wire range	22-12AWG	4.0mm ²
Withstand voltage	AC2000V/Min	AC2000V/Min
Insulation resistance	1000MΩ/DC500V	1000MΩ/DC500V

Mechanical		
Torque value max.	0.8N.m 7.0Lb.in	0.8N.m 7.0Lb.in
Ambient temperature	-40°C - +80°C	-40°C - +80°C

Dimensions		
Pitch	9.5mm(.375 inch)	9.5mm(.375 inch)
Poles	2P-24P	2P-24P

Material		
Housing	PC UL 94V-2	PC UL 94V-2
Terminal	Brass, 0.8t, Tin-Plated	Brass, 0.8t, Tin-Plated
Screws	Steel, M3.5 Ni-Plated	Steel, M3.5 Ni-Plated

Type	Order code	1+	25+	100+	500+
4-way screw to screw	21-3073	0.80	0.6324	0.5273	0.4223



Barrier terminal blocks with solder terminals

These terminal blocks are of excellent quality and competitively priced. They are available with 3, 4 and 12-way terminal options and are supplied with tin plated brass solder terminals. (Spade lugs are also available; please see order codes **21-3072**, **21-3073** and **21-3074**).



The block's rugged construction of high impact material will protect the filter elements during installation and field service. Typical applications include filtering power supplies in telecommunications equipment, metering, industrial controls, instrumentation and EDP equipment.

- Screw to solder tag fitting
- Available in **3, 4** and **12-way** options
- Housing: PA66 UL94V-0
- Terminals: Brass, 0.8t, Tin-Plated
- Screws: Steel, M4 Ni-Plated
- Temperature range: -40°C - +105°C
- Withstand voltage: AC2000V/Min
- Insulation resistance: 500MO/DC500V
- Wire range: 22-12AWG, 4.0mm²
- For full specification and schematics, please see datasheet

Technical specification

Approvals	USA Standard	CE
Electrical		
Standard	UL	IEC
Rated voltage	300V	450V
Rated current	25A	32A
Wire range	22-12AWG	4.0mm ²
Withstand voltage	AC2000V/Min	AC2000V/Min
Insulation resistance	500MO/DC500V	500MO/DC500V
Mechanical		
Torque value max.	1.2N.m 10.6Lb.in	1.2N.m 10.6Lb.in
Ambient temperature	-40°C - +105°C	-40°C - +105°C
Dimensions		
Pitch	9.5mm (.375 inch)	9.5mm (.375 inch)
Poles	2P-20P	2P-20P
Material		
Housing	PA66 UL94V-0	PA66 UL94V-0
Terminal	Brass, 0.8t, Tin-Plated	Brass, 0.8t, Tin-Plated
Screws	Steel, M4 Ni-Plated	Steel, M4 Ni-Plated

Type	Order code	1+
3-way screw to solder	21-3075	0.26
4-way screw to solder	21-3076	0.33
12-way screw to solder	21-3077	0.65

Cinch Modular 15A terminal block

Modular screw to tag terminal blocks available in 2 and 3-way options which may be combined to provide any number of ways required.

- Cinch types **R44.38.0xx** and **R44.39.0xx** where xx is no. of ways



Technical specification

Moulding	High impact
Terminal plates	Nickel plated brass
Screw terminations	4BA
Maximum working voltage	750V DC or AC rms
Current rating	15A
Temperature range	-55°C to +100°C
Dimensions	2-way 18.25 x 22.25 x 12.7 (above panel)
	3-way 27.77 x 22.25 x 12.7 (above panel)

Type	Order code	1+	25+	100+
2-way Screw to tag	21-1015	0.94	0.8364	0.663
3-way Screw to tag	21-1020	0.97	0.8976	0.8568
Joining segment	21-1040	0.17	0.153	0.1224
End cap	21-1045	0.17	0.153	0.1224

Page 732

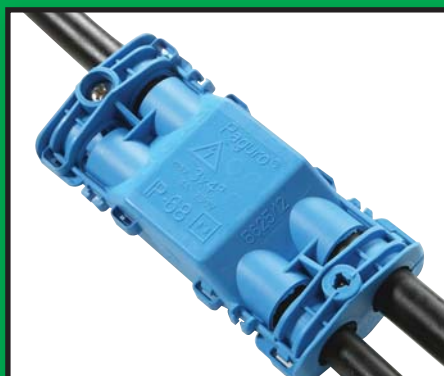
Encapsulated transformers



Gel filled connectors

Visit the Rapid website for these latest gel filled connectors

NEW



www.rapidonline.com